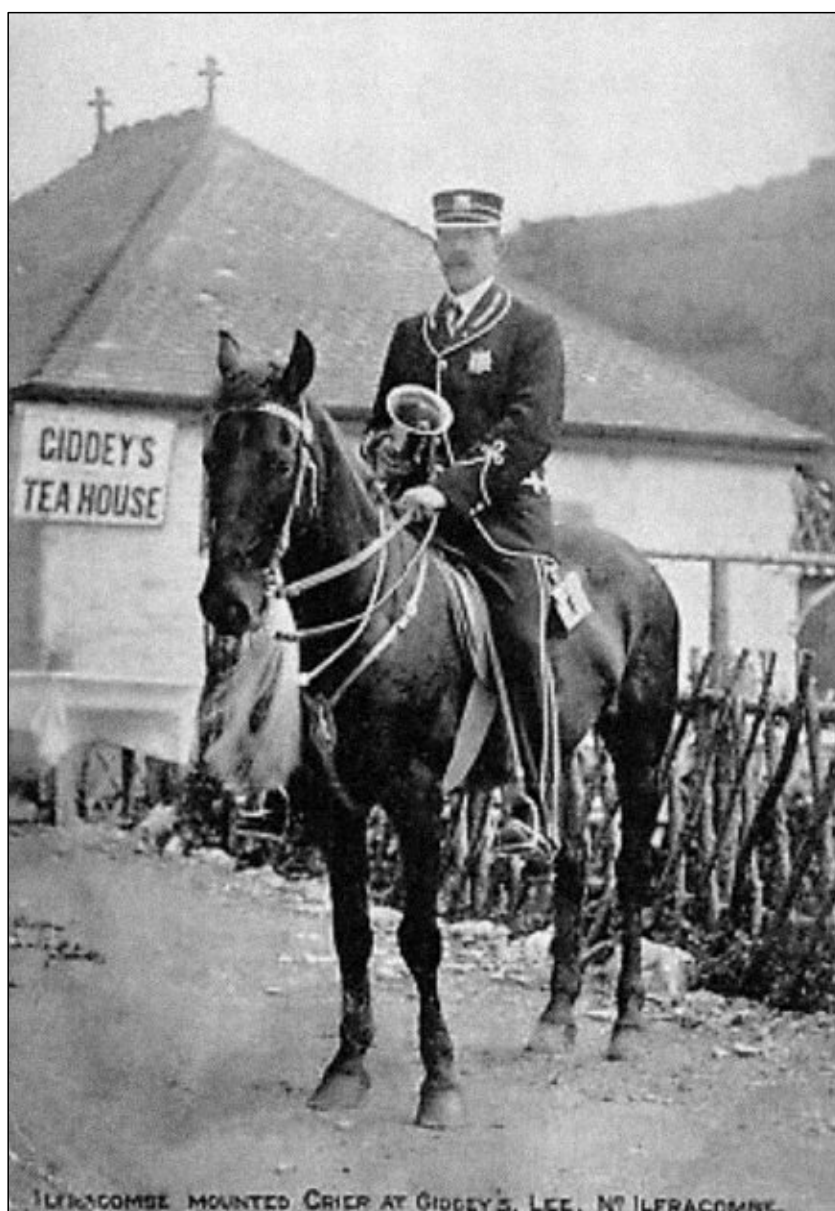


FOR THE RESIDENTS OF LEE & LINCOMBE VILLAGES  
AND SURROUNDING AREAS AND OUR VISITORS

# LEE & LINK'EM NEWS

SPRING 2022

75P



ROBERT MARTIN, ILFRACOMBE'S MOUNTED CRIER, AT GIDDEY'S TEA HOUSE  
(NOW WAYSIDE), LEE - FROM A POSTCARD DATED 1909

[www.leebay.co.uk](http://www.leebay.co.uk)

## LEE & LINCOMBE DIARY DATES

As Lee and Lincombe move out of the COVID-19 restrictions, so events are beginning to be organised. Watch out for information on the Fuchsia List or on posters. In particular, two events are being planned around the Jubilee bank holiday. It is hoped that a Spring Fayre will take place in the Hall and Meadow on Friday 3<sup>rd</sup> June and that there will be a Flower Festival in St. Matthew's Church from Thursday 2<sup>nd</sup> June to Sunday 5<sup>th</sup> June.

Please visit [www.leebay.co.uk](http://www.leebay.co.uk) for the regularly updated calendar.

**MILLFIELD** SELF-CATERING COTTAGE - OVERLOOKING LEE BAY - NORTH DEVON







SPACIOUS DETACHED BUNGALOW - SLEEPS 6 IN 4 BEDROOMS - PRIVATE GARDEN - OFF-ROAD PARKING

Large lounge with wood burning stove, conservatory, open plan kitchen and dining room with patio doors leading out to one of the best views in North Devon, making your stay a truly unforgettable experience.

for more information and to book go to: [www.millfieldcottage.co.uk](http://www.millfieldcottage.co.uk)

## GREETINGS AND FAREWELLS



The death of Bob Gilliat at the age of 94 on 7th February is immensely sad. He was well known to a very large number of people locally, nationally and internationally. All of us pass on our heartfelt condolences and sympathy to his wife, Liz, daughters Judy and Jane,

grandchildren Joanna, Stephanie, Claire and Fiona, and great-grandchildren Ted, Tilly and Dotty. This is a very brief tribute to Bob in our Greetings and Farewells section for this edition of the Lee & Link'em News. There will be opportunities for fuller tributes to Bob in the summer edition of the News.

Following a productive time at Culford School in East Anglia, Bob had a highly successful military career in the Royal Engineers rising to the rank of Colonel. One of the many highlights of his army career was his period at SHAPE, Supreme Headquarters Allied Powers Europe, located at the NATO Headquarters in Belgium where he worked for an American General. He also spent time in Africa. After retiring from the army, Bob was appointed

Administrator of Lundy. He was in charge of Lundy for many years leaving after completing his conservation work there. He moved to Ilfracombe and met a lady called Liz Race who had just bought a property in a little village on the coast called Lee. She sought his opinion as an engineer on a structural matter and before long he was suggesting they(!) bought the other half of the same building – the Old Post Office – which was for sale. The rest is history! Bob and Liz got married and have lived together in what has been one house for over 30 years. Once back from Lundy, Bob has contributed greatly to the local area. He became a Councillor on both North Devon and Ilfracombe Town Councils being a most valued member of these Councils. He was also Chairman of the Ilfracombe and District Crime Prevention Panel. For this role he was awarded the MBE in the 2010 Queen's Birthday Honours List. In the village Bob was a stalwart of many organisations and events. He was on the St Matthew's Church Council for many years and frequently read the lessons. He was highly respected member of the community and will be greatly missed.

Ian Stuart

## GREETINGS AND FAREWELLS

Just as it's immensely sad that Bob has died, so it's splendid to announce the birth of a new baby very recently. We can confidently say that he is the newest and smallest resident in the village! He is the son of Chrissie and Josh and brother of Henry and Rufus.

Josh writes, 'There is indeed a new arrival (a little boy whom we named Remy) and we returned home at the beginning of February after four weeks in the Exeter neonatal unit - he was 2 months early! We're so pleased to bring a new resident to the village.'

Chrissie and Remy are doing very well and the boys are happy to have us all home after their Nanny, Grandad and Aunt held the fort down. Remy was allowed out on good behaviour because he was feeding beautifully and putting weight on'.

We are also delighted to welcome Sam and Emma Stafford and their two young children, Violet (6) and Bertie (3) to the village. Not that they are strangers to the village as Sam's parents, Greg and Anne, have lived in the village for many years. Sam has known Lee all his life and, as Emma says, she has 'loved it since her first visit'. The family is now living in the Lodge which is in the grounds of Greg's and Anne's house at Windcutter. Here is what Emma says about the family.

'After the extended lockdown period, Sam and I decided to finally take the plunge and move to North Devon and Lee. We wish to raise the children in a beautiful environment, give them as many opportunities as possible, be part of a community and, of course, we want to spend more time together as a family. Previously Sam was commuting 6 hours a day to his former job as a bespoke tailor in Wandsworth and we saw very little of him. We realised this needed to change and we needed to address our work-life balance! Moving to Lee means we will also be spend more time with Anne and Greg, as, during lockdown, they were very isolated.

Of course, Sam has been visiting Lee all his life, and I have loved it since our first visit together. When we decided to get married of course the obvious choice was to marry in the church here, and we also christened our daughter



Violet here. Bertie's christening was delayed by Covid but we hope to christen him in Lee before Giles retires.

Violet is 6 and currently at Ilfracombe infants and nursery, and is doing very well. She is on the waiting list for Woolacombe School. She enjoys horse riding, and ballet and loves art and crafting! Bertie is 3 and at Woolacombe nursery. He loves tractors and diggers, and is very happy with the amount he sees daily, although he would like to see more blue tractors!

Sam for the moment has left behind bespoke tailoring, as the demand for three thousand pound suits is somewhat lacking! He has returned to cooking, working as a chef for Bar Electric, which he helped open almost 13 years ago when he previously lived in the village.

I was also a tailor, making jackets for Savile Row, and also previously a dresser and costume maker for West End musicals. For the moment my sewing career has slowed. I occasionally work on films and TV making costumes and doing on set alterations, but, due to family commitments, this work is very sporadic. However, if you saw the Marks and Spencer Christmas campaign with the busby Berkeley style show girls, I made the costumes for that! As the children grow I hope to be able to set up my own studio and do more.

As for the Lodge, we have named it Sybil Lodge after Sam's grandmother (also a previous resident of Lee)'.

---

## FIRST AID REQUIRED?

Call Bill at The Grampus Inn (with onsite defibrillator) on 862906

## NEWS FROM ST. MATTHEW'S CHURCH



Since the last edition of the News there have been notable events on Remembrance Sunday and around Christmas.

On Remembrance Sunday, after the All-age service in the church, we moved outside to the road around the War Memorial where the church congregation was joined by a number of others for the act of remembrance. It is always a moving occasion especially as the 19 names on the memorial are read out – surely a large number for such a small village – followed by the 2 minute silence. It was good this year to be able to go into the Memorial Hall after the ceremony for refreshments and to enjoy a sociable atmosphere.

Last year, instead of a carol service, we held an outdoor event starting outside the church by singing some carols before moving on to the area outside the Old Post Office to sing some more carols. This year, as holding a carol service for a large number of people in the church would still not be wise, we held another outdoor event on a somewhat bigger scale for another very successful occasion. Everyone in the village was invited to visit the church decorated for Christmas before assembling outside the church and hall to enjoy 'Carols on the Road'. Around 70 people, including children, took part with the singing led by Paul Jaggers and friends; after a number of carols and a reading of part of the Christmas story, we moved down to the Old Post Office area

singing as we walked. Then we sang more carols with some solos and another reading before processing back to the village hall. Here the hall committee provided refreshments, including mulled wine, for consumption outside. The weather was kind to us and a great evening was enjoyed by everyone. On Christmas Eve, at the traditional time for Lee of 10.00 pm, we held our Christmas communion service though without a choir so the gallery could, if necessary, be used by the congregation. In fact numbers attending was just right without overcrowding with 27 in the congregation.

At the time of writing in early February, St Matthew's and the other coastal churches in our group in Morteohoe and Woolacombe have issued some updated Covid guidance. The emphasis is now very much on personal decisions and on continuing to be aware of others who may be vulnerable. Everyone is most welcome to the weekly service at St Matthew's each Sunday at 8.45 am. As its name suggests, the All-age service held on the second Sunday in each month has a particular emphasis on families. Indeed as Mothering Sunday is on 27th March this year, the All-age service will be on 27th March instead of the usual second Sunday. But do come along any Sunday!

Ian Stuart,  
Churchwarden and Vice-Chairman St Matthew's PCC



## LEE CHAPEL & SCHOOLHOUSE



**Lee Chapel**  
(sleeps 5)

**Schoolhouse**  
(sleeps 2)

Charming contemporary  
self catering accommodation.

A real home from home, in a  
tranquil setting with private  
parking in beautiful Lee Bay.



[visitleechapel@gmail.com](mailto:visitleechapel@gmail.com)

[www.visitleechapel.co.uk](http://www.visitleechapel.co.uk)

# Middle Campscott Farm

ORGANIC, SUSTAINABLY FARMED AND GRASS FED

Ruby Devon Beef

Hogget Lamb

Artisan Ewes' Milk Cheese

Organic Knitting Wool

Blankets & Throws from our sheep's wool

Knitting Kits

Farm gate sales or free local deliveries for orders over £15.00



Karen & Lawrence Wright

01271 864621

[farm@middlecampscott.co.uk](mailto:farm@middlecampscott.co.uk)



## LEE MEMORIAL HALL UPDATE



Things at the hall are often quite quiet over the winter months and this year has been no exception.

Mini Monsters has started up again in the hall and has two new organisers, Sarah and Michelle.

The Ecstatic dancers, Yoga sessions, W.I, Art group and Quilters have continued, and the church group are holding their refreshments here again after services.

We've had a wedding celebration, a birthday party, a couple of yoga retreats and a number of meetings.

We were very pleased to provide refreshments following the Carol Service, but owing to COVID-19 protection measures, the mulled wine and nibbles were a takeaway, villagers entering one door and leaving by another. It worked well and it was a great opportunity to socialise again, provided you could recognise people behind their masks!

As mentioned in the previous Lee & Link'Em News, our heating boiler gave up and it took a few months before we were provided with a new heating system.

We now have an air source heat pump, albeit a smaller, temporary one at the moment. As soon as the replacement is available it will be installed.

We finally held our AGM on 15th November and also said goodbye to our Chairman of the past seven years, Alan Bannister. He felt it was time to step down and have a rest and hopefully our gift of a garden recliner will help with that!

We are grateful to Alan for all the work he has put in over the years, including setting up the hall website, changing our charity status - which was no mean feat, and with the help of the committee, instigating the new hall floor, replacing the play area and currently, the installation of our new heating system.

Our annual fuchsia cutting (images included) took place in mid January, and whilst there were fewer of us than usual, we got the job done and enjoyed some mulled wine and mince pies afterwards.



We look forward to the daffodils flowering along the roadside soon and later in the year our wildflower meadow, lovingly cultivated by Matt Smith, one of our new trustees.

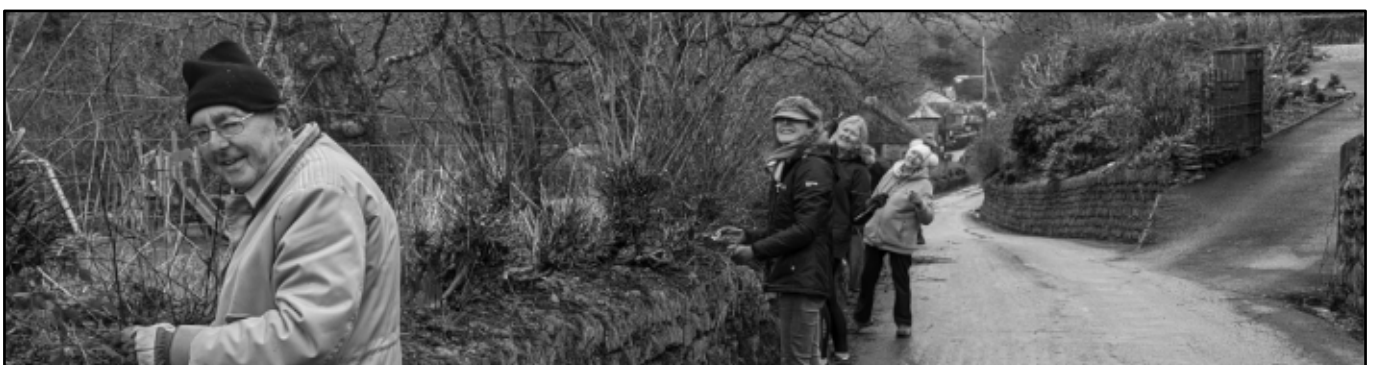
Our latest news is that Lyndon Worrall of Rose Cottage is our new Chair and we all look forward to working with him to continue making our village hall a great place to be.

The 100 club continues to help with hall outgoings and can be a pleasant surprise at the end of each month for those whose number comes up!

We are always happy to welcome new subscribers. Please contact our treasurer, Edna, via the contact details below.

Jane Johncock, Hall Secretary

Edna Thompson: 44edna@gmail.com





# Let us find the right mortgage for you and your pocket

With access to the whole of market, including large high street and small niche lenders, we'll ensure you get the most suitable mortgage for you.\*

\*Your home may be repossessed if you do not keep up repayments on your mortgage.

Simply contact Town & Country Financial Advisers to discuss your options.

**01769 574674**  
[info@devonfinancialadvisers.co.uk](mailto:info@devonfinancialadvisers.co.uk)  
 16-18 East Street | South Molton | EX36 3BU

**TOWN & COUNTRY**  
[devonfinancialadvisers.co.uk](http://devonfinancialadvisers.co.uk)

<p>Amary Farm          Dibbon's Lane          Lincombe          EX34 8LS</p> <p>📷 @Amaryfarm          📞 07368 339387          📞 07796 313803</p>  <p>Amary Farm is a no-till organic market garden using agroecological and agroforestry practices to grow fresh seasonal produce for the community.</p> <p>All grown "in conversion" to Soil Association Standards by local family business.</p>	<p><b>Vegetables          Salad          Fruits          Herbs          Cut Flowers</b></p> <p>Sold at the farm gate, local farmer's markets and direct to your door.</p> <p>Pop in and say hello to us          Jon, Zoe &amp; Will Davis</p>
<p>We stock a range of Soil Association approved Organic Composts and Manure</p> <p>Moorland Gold Compost - 40L Bags          Greenvale Plant Food - 25Kg Bags</p> <p>Visit our website for more details: <a href="http://www.northdevonorganics.co.uk">www.northdevonorganics.co.uk</a></p> 	

## ALL CHANGE AT THE FUCHSIA TEA ROOMS! BY KATHRYN HONE

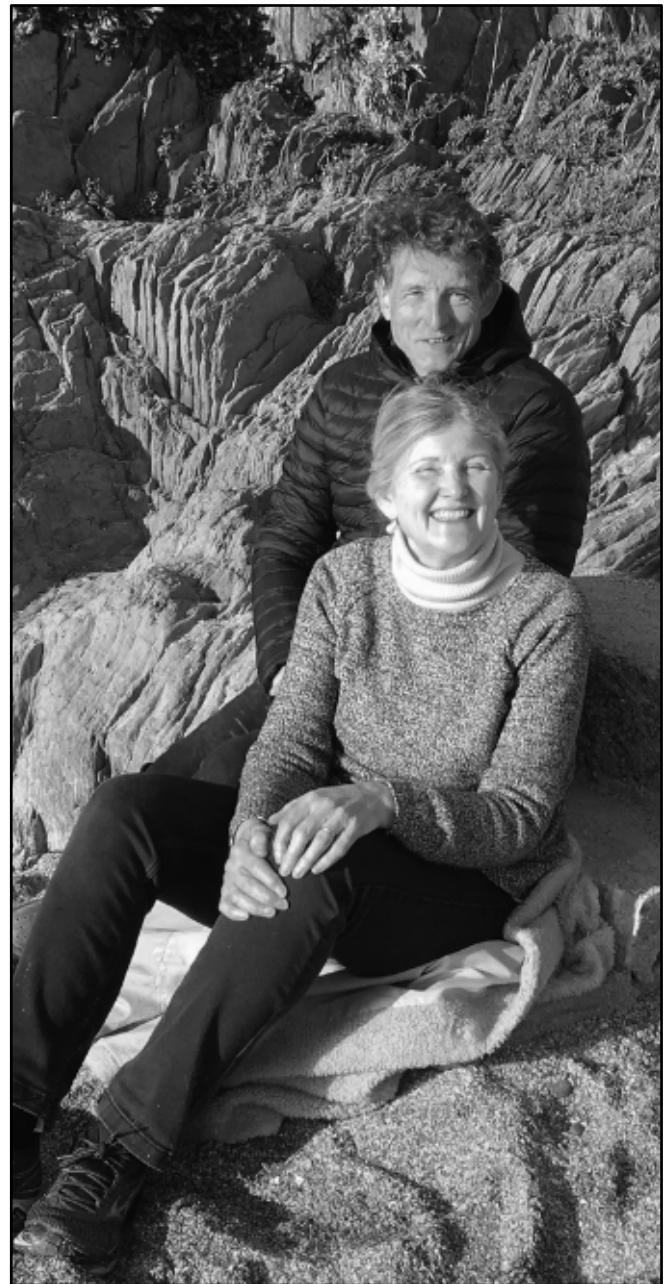
Big changes have been happening in the former Fuchsia Tea Rooms and ex post office over the past year. All four of the dwellings have changed hands and the new owners have enjoyed getting to know each other.

First to arrive, in February 2021, were Louise and Paul Ansdell, who bought Tea Shop Cottage as a bolthole from their busy lives in Oxford, Louise as a family lawyer, Paul as an actor.

Louise says: "We are even happier, a year on, than the day we picked up the keys! It has been wonderful to get to know people in the village. The welcome has been so warm. We will be nurturing the fuchsia hedge back to as good-as-we-can-get-it, and undertaking work to get our bit of the building in good condition. The lure of the bay and the sea is a great distraction from all that, however! We renamed the cottage Quinnettes, which is the name of Paul's grandfather's house. It comes from the old English word 'quintot' which means 'a little plot of land'."



*Louise and Paul Ansdell of Quinnettes (was Tea Shop Cottage)*



*Kathryn Hone and Trevor Huggins, Sun Penny Cottage*

Kathryn Hone and Trevor Huggins, both journalists, bought Sun Penny Cottage last March, intending to continue its success as a holiday cottage and buy another home in the area when they moved here from Teddington, south-west London. But they didn't find another house they liked as much and decided to move into Sun Penny permanently last November. Since then they have been enjoying village life, especially Kathryn, who retired from the Daily Telegraph at Christmas.

## ALL CHANGE AT THE FUCHSIA TEA ROOMS!, CONTD.



*Alex and Clare Dunbar with daughters Alice and Emily, Gull Cottage*

Their new next-door neighbours at Gull Cottage are Alex and Clare Dunbar, who are tirelessly renovating the house and garden themselves, helped by Clare's father Andrew, as often as they can come down from their home in Bath. They have two teenage daughters and Woody, their dog, and recently moved back from Chicago to the UK, where Clare works for Dyson and Alex in a secondary school. They are keen walkers, gardeners, surfers and all things outdoors, and hope to retire to Lee eventually.

Finally, Seal Cottage was bought last autumn by Phil and Claire Sparks, who are often to be seen out and about with their four border collies. Phil originates from Dulverton, west Somerset, but the couple live in Yorkshire, in a village called Airmyn, a few miles south of York. Claire has worked in the same veterinary practice for over 20 years, and Phil manages an agricultural company he sold to a Dutch company seven years ago.

Phil says: "We have two children, William, an electrician, and Olivia, who works in marketing and who lives at Exford on Exmoor.

"We bought the old post office to give us a place to get away from the world and relax by the sea. Oh yes, and be nearer to our daughter... but not too close!"

*Phil and  
Claire  
Sparks, Seal  
Cottage*





# Mike Turton BUTCHER

Est. 1855 146 HIGH STREET, ILFRACOMBE

**Devon Ruby Red Beef & Lamb**  
from Combe Martin

**Local Pork & Bacon**  
from Holsworthy

**Free Range Poultry**  
from Creedy Carver, CREDITON

**Our own sausages & burgers**

**A range of local cheeses**  
and cooked meats

**We also have a range of pasties, pies**  
and homemade scones

Visit or telephone/email your order for next day collection



**01271 863643**  
miketurtonbutcher@gmail.com



**40 High Street, Ilfracombe**  
**Phone us on 01271 863105**



**Daily deliveries to**  
**businesses and homes**  
**in Lee, Ilfracombe,**  
**Combe Martin and Berrynarbor**

**We also sell Gift Vouchers,**  
**Fruit Baskets and Flowers**

## *The Old Schoolroom Craft Gallery*



***Contemporary and Traditional***  
***local arts and crafts***

**Shop online** [www.wildcoast.co.uk](http://www.wildcoast.co.uk)

**Follow on Facebook to keep up to date with**  
**upcoming craft workshops and events**



## THE CRAFTY BEER SHOP BARNSTAPLE

Craft Beer | Local Beer | Gins | Spirits | Wines | Gift Vouchers



Browse our shop in store or online  
Click | Buy | Collect | Deliveries to your door



**f @thecraftybeershop @@craftybeershop @craftybeershop**  
**www.thecraftybeershop.com | 01271 523966**  
**15 Butchers Row, Barnstaple EX31 1BW**

## NEWS FROM THE GRAMPUS INN



A very warm greeting from the Grampus Family! We have continued to see a steady number of visitors over the winter period as more people are getting out and about to enjoy our beautiful part of the world. We had a very busy winter holiday and it was wonderful to see so many local faces helping us celebrate Christmas and ring in the New Year!

The question we are asked most often these days is "are you doing music again?" and we are very happy to let you know that Friday Night Open Mic is back on! We are still operating as table service only, no bar service, so we recommend that you book a table if you would like to join us for music night. Please be aware when making a reservation that we now have the music set up in the back room.

In February we were very happy to be able to welcome back the monthly meeting of Agnostics Anonymous. The first meeting was very well-attended and, as always, there were some very thought-provoking conversations. If you would like to join the discussion group they will be meeting at the Grampus on 28th of February and 28th of March at 8pm. No need to book in, just turn up and enjoy the company and conversation.

In February we also welcomed kayaker and environmentalist Liz Garnet to The Grampus as she spoke about her adventures kayaking from John O'Groats all the way out to the most northerly rock in the British Isles, Muckle Flugga. This fascinating talk, which included the difficulties of open sea crossings, challenging tides, wildlife, and archeology, was a fundraiser for the wonderful organization Plastic Free North Devon. Sustainability and environmental awareness are a key part of the Grampus ethos and we are very happy to have the opportunity to partner with people who share our core values.

Francis and Bill have recently been back in the brewery so be sure to stop in for a pint of Hoppy Dog! We hope to have more Grampus Ales on soon. Bill continues to keep us well stocked with Grampus Gin, which has turned into the most popular gin on the menu. If you haven't tried it yet you are definitely missing out!

If you have any questions about what we are up to, want to see our latest opening hours, or want to make a booking online please have a look at our website [thegrampusinn.co.uk](http://thegrampusinn.co.uk) or check out our Facebook page. We want to thank everyone in the village for your continued support and we look forward to seeing you soon.

## **WALL NEAR CAR PARK**

A big thank you to Maia at Southcliffe Hall for arranging the rebuilding of the wall, near the access to Southcliffe Hall drive, Brackenhurst and the public footpath, that came down following recent stormy weather.

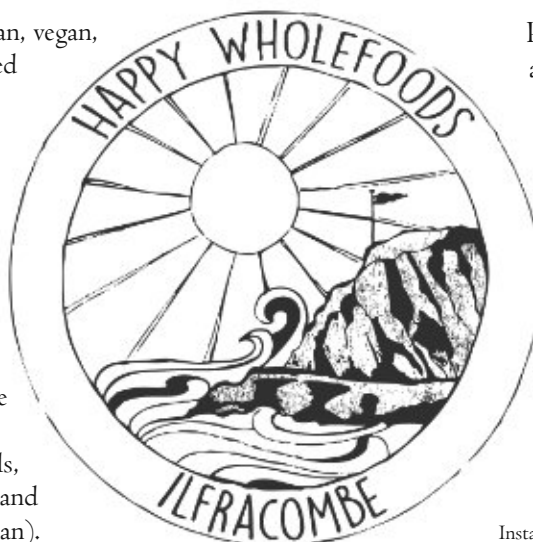
Cllr Pat Coates (image supplied by Pat)



We offer organic, vegetarian, vegan, gluten free ethically sourced foods, suitable for a wide range of dietary requirements.

Come and take a look at our well stocked cake decorating corner, tower of flour and wall of tea.

We have an extensive range of supplements and vitamins, aromatherapy oils, cleaning products, chilled and frozen (vegan and vegetarian).



Personal care, local honey, a large range of herbs and spices, fresh coffee beans and much much more for a happy healthy lifestyle.

16 High Street  
Ilfracombe  
Devon  
EX34 9DF

01271 863 558

Facebook: Happy Wholefoods  
Instagram: Happy Wholefoods Ilfracombe

## LEE BAY HOTEL SITE UPDATE

Revisions to the planning application for the former Lee Bay Hotel site have now been published and can be seen on the North Devon Council website under application 72859

The Chair of Ilfracombe Town Council Planning Committee, Geoff Fowler, has raised some of the outstanding concerns on our behalf with the planner responsible for this application, Maria Bailey.

At time of going to print we are awaiting more information on the knotweed treatment plan, sewage treatment system and confirmation on the plan that the toilet site (Ilfracombe Town Council owned) is outside the proposed development site. In addition, we are awaiting confirmation of a contribution towards the upkeep of the toilets from the developers.

Cllr Pat Coates

## Old Maids Cottage

Character 17c , Thatched Cottage in Lee Bay, North Devon.

Visit [sykescottages.co.uk](http://sykescottages.co.uk) for availability and book or for info call Paul at 07741 297004



3 Double Bedrooms, sleeps 6  
3 Bathrooms ( 2 en-suite)  
Contemporary extension



Log Burner  
Open plan living area  
Modern kitchen facilities



Off road park for 3-4 cars  
Enclosed garden  
Beach 300m, Pub 100m

## HALF BARREL OAK PLANTERS

The half barrel oak planters awarded to Lee and Lincombe from the government Welcome Back Fund have started to be delivered.

There will be three for use outside Lee Memorial Hall, two for outside Lee toilets and one for near the Lee sign as you descend from Lincombe.

The Town Council team will fill them with compost and undertake initial planting. Thank you to Jo Kift for offering hardcore for inside them.

Cllr Pat Coates (image supplied by Pat)

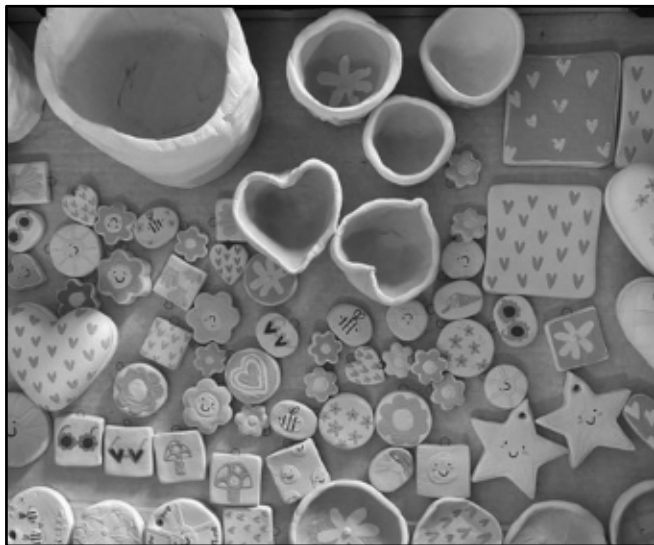


## THE OLD SCHOOLROOM CRAFT GALLERY – FROM LOUISE THOMPSON

The gallery always has a period of being closed in late winter/ early spring. This gives us the chance to have a good old spring clean and redecorate as necessary inside the Schoolroom. We are also busy making lots of new stock for the coming season, setting out the shelves and hanging the paintings and prints on the walls. This is always a mammoth task but we always manage to get it done!

The gallery stocks work from 18 local artists and crafters so we have a lovely variety on display.

Alongside the hand crafted items, we stock all sorts of things from jam to maps, children's toys to books. We are hoping to expand our stock of art and craft supplies for sale. These were very popular last year with lots of people purchasing sketchbooks and pencils, obviously inspired by the village and coastline of Lee.



Handmade Ceramics @daismaethompsonart

The Gallery is open from mid-March. Thank you everyone for your continued support and here's hoping for a normal year's trading!

Follow us on social media for updates

Facebook: the old schoolroom craft gallery

Instagram: @wildcoastart

@Oldschool.leeby

Twitter @wildcoastart



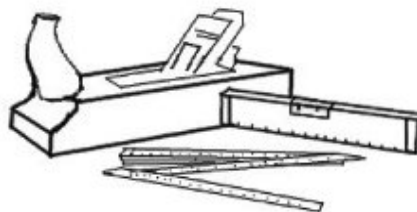
Painting the gallery wall



Original greetings cards

# Real Craftsmanship

All kinds of bespoke Woodwork  
Kitchens, Doors, Windows, Furniture, etc.  
New builds and repairs  
Over 30 years of experience



Holger Meyer  
real-craft  
Tel: 0774 558 7667

facebook.com/holgersworkshop  
Website: real-craft.eu  
Email: holger@real-craft.eu



Super Fast Unlimited Broadband

Contact : Tony Watkins  
07496 179 465  
tony.watkins@airband.co.uk

## LEE & LINK'EM NEWS INFORMATION AND CONTACT DETAILS

Our thrice-yearly newsletter is delivered free to residents, and available to buy at 75p from The Grampus Inn or The Old Schoolroom Craft Gallery & Gift Shop.

We offer UK postal annual subscription (3 issues) too, delivered to your door for £6 per year (as of Summer 2021). If you would like to subscribe, please contact the editors.

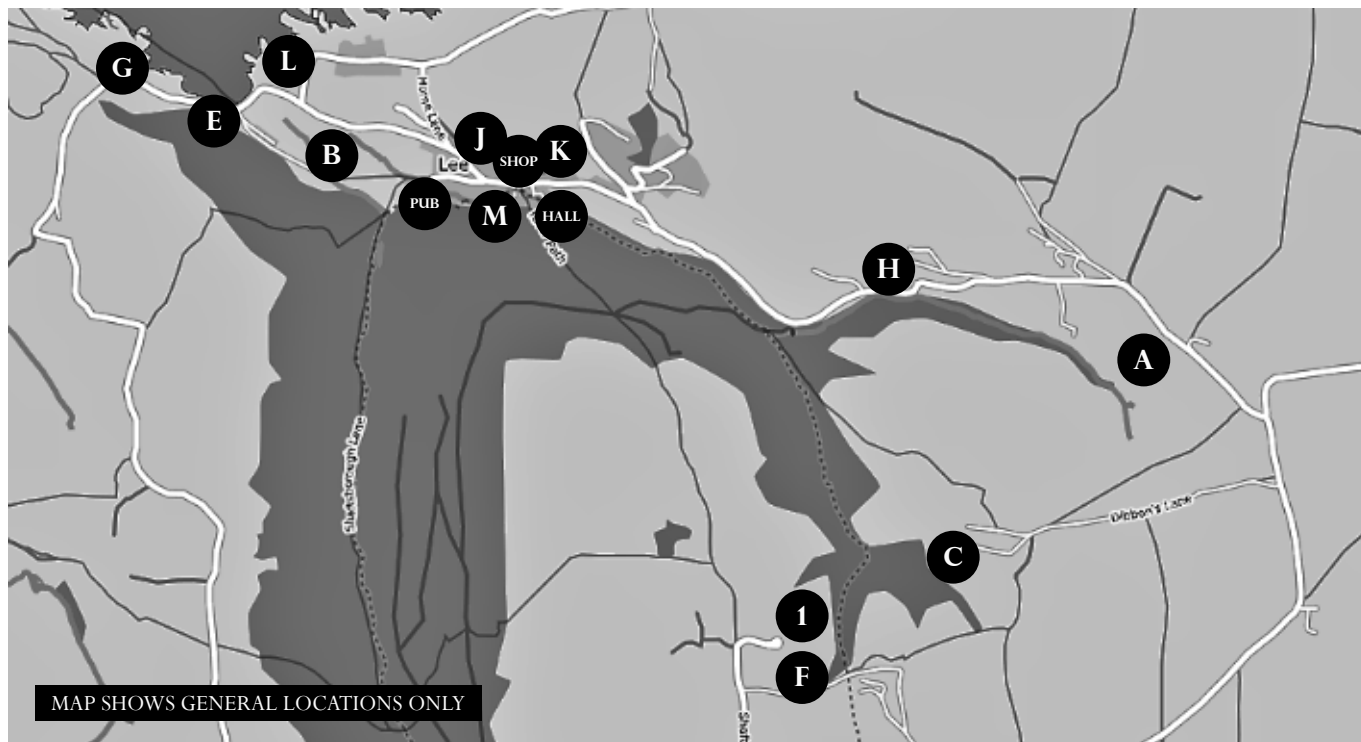
Thanks to sponsors, the Lee & Link'em News continues to be freely available online to read and/or download. Please visit [www.leebay.co.uk](http://www.leebay.co.uk) and follow the links.

<b>Editorial team</b>	Ian & Cynthia Stuart	01271 863396 / <a href="mailto:ian@leedevon.co.uk">ian@leedevon.co.uk</a>
	Gina-Luisa Hilborne	<a href="mailto:gina@loveleebay.co.uk">gina@loveleebay.co.uk</a>
	Heather Booker	<a href="mailto:advertise@loveleebay.co.uk">advertise@loveleebay.co.uk</a>

<b>Production</b>	Ian & Cynthia Stuart	<b>Advertising</b>	Heather Booker
-------------------	----------------------	--------------------	----------------

**Delivery teams**      *Many thanks to our delivery teams. If you would like to help with delivering the News, one of the editorial team would be delighted to hear from you.*

## LEE &amp; LINCOMBE ACCOMMODATION &amp; SERVICES GUIDE



## VILLAGE SERVICES

- pub. The Grampus Inn - Bill Harvey \_\_\_\_\_ (01271) 862906
- shop. The Old Schoolroom Craft Gallery & Gift Shop - [www.wildcoast.co.uk](http://www.wildcoast.co.uk) - Louise Thompson \_\_\_\_\_ (01271) 864067
- hall. Lee Memorial Hall - for hire: [leehallreservations@gmail.com](mailto:leehallreservations@gmail.com) - Martin Johncock \_\_\_\_\_ (01271) 269751

## BED &amp; BREAKFAST

1. Shaftsboro Farm - [www.shaftsboro.co.uk](http://www.shaftsboro.co.uk) - Margaret Kift \_\_\_\_\_ (01271) 865029

## SELF CATERING (MAX. PER UNIT)

- A. Lincombe House (2,6,5) - [www.lincombehouse.co.uk](http://www.lincombehouse.co.uk) - Richenda S Carter \_\_\_\_\_ (01271) 864834
- B. Chapel Cottage on Beach Lane (9) - [www.chapelcottagelee.co.uk](http://www.chapelcottagelee.co.uk) - Ginny Potts \_\_\_\_\_ (01271) 867212
- C. Lower Campscott Farm (3,4,4,4,5,6,6,8) - [www.lowercampscott.co.uk](http://www.lowercampscott.co.uk) - Kathy & Tony Mortimer \_\_\_\_\_ (01271) 863479
- D. Advertise here - just £3 a year!
- E. Beach House (9) - [www.beachhouseinlee.com](http://www.beachhouseinlee.com) - Ginny Potts \_\_\_\_\_ (01271) 867212
- F. Shaftsboro Farm - [www.shaftsboro.co.uk](http://www.shaftsboro.co.uk) - Margaret Kift \_\_\_\_\_ (01271) 865029
- G. Damage Hue apartment (2+2) - [www.damagehue.co.uk](http://www.damagehue.co.uk) - Julien Busselle \_\_\_\_\_ (01271) 862876
- H. Lee Chapel (5) & School House (2), combined (7) - [www.visitleechapel.co.uk](http://www.visitleechapel.co.uk) - Ginny Potts \_\_\_\_\_ (01271) 867212
- J. Old Maids Cottage (6) - [www.sykescottages.co.uk/1022678](http://www.sykescottages.co.uk/1022678) - Paul Hey \_\_\_\_\_ 07741 297 004
- K. The Old Vicarage (15) - [www.theoldvicaragelee.com](http://www.theoldvicaragelee.com) - Amanda Robertson \_\_\_\_\_ 07973 963 887
- L. Millfield (6) - [www.millfieldcottage.co.uk](http://www.millfieldcottage.co.uk) - Louise Morris \_\_\_\_\_ [bookings@millfieldcottage.co.uk](mailto:bookings@millfieldcottage.co.uk)
- M. Advertise here - just £3 a year!

*The opinions expressed by authors of the articles in the Lee & Link'em News are not specifically endorsed by the editorial team which cannot be held responsible for them.*

## SUMMER 2022 ISSUE DEADLINE - 01 JUNE 2022

Articles typed in an email or DOC format and emailed to [gina@loveleebay.co.uk](mailto:gina@loveleebay.co.uk). No CDs, disks, drives or handwriting please.

ALL ADVERTISING MUST BE PAID FOR BEFORE THE COPY DEADLINE OR IT WILL NOT APPEAR.