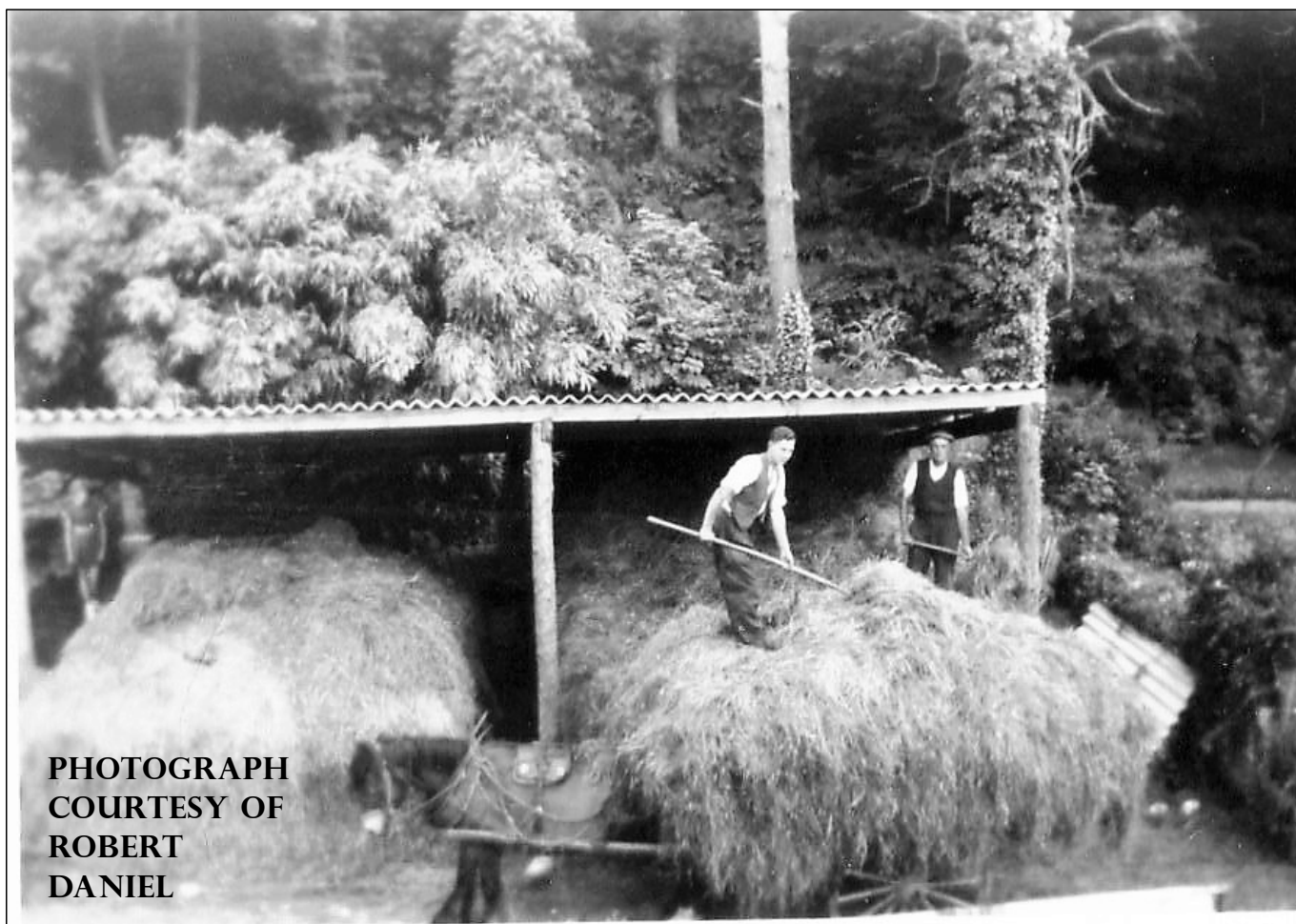


FOR THE RESIDENTS OF LEE & LINCOMBE VILLAGES
AND SURROUNDING AREAS AND OUR VISITORS

LEE & LINK'EM NEWS

AUTUMN 2021

75P



PHOTOGRAPH
COURTESY OF
ROBERT
DANIEL

CART HORSE "DOLL" WAITS PATIENTLY AT THE OLD FARM,
NOW THE GRAMPUS INN - MORE INFORMATION INSIDE

www.leebay.co.uk

LEE & LINCOMBE DIARY DATES

Lee and Lincombe remain on coronavirus COVID-19 pandemic restrictions. Nothing to see here just yet.

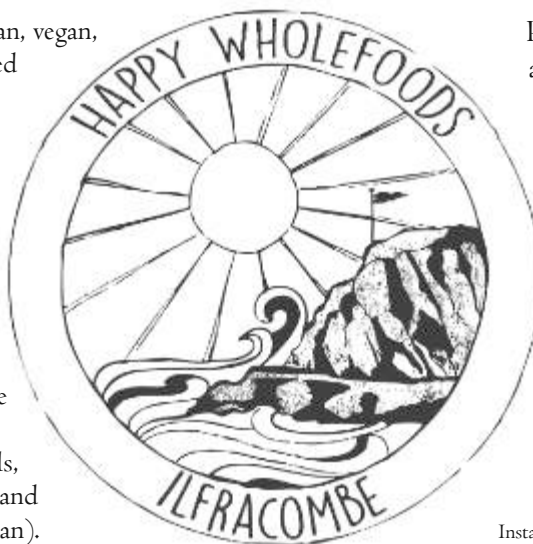
Other events may take place. Watch out for information on the Fuchsia List or on posters. If you would like your event included in the next edition, please contact a member of the editorial team.

Please visit www.leebay.co.uk for the regularly updated calendar.

We offer organic, vegetarian, vegan, gluten free ethically sourced foods, suitable for a wide range of dietary requirements.

Come and take a look at our well stocked cake decorating corner, tower of flour and wall of tea.

We have an extensive range of supplements and vitamins, aromatherapy oils, cleaning products, chilled and frozen (vegan and vegetarian).



Personal care, local honey, a large range of herbs and spices, fresh coffee beans and much much more for a happy healthy lifestyle.

16 High Street
Ilfracombe
Devon
EX34 9DF

01271 863 558

Facebook: Happy Wholefoods
Instagram: Happy Wholefoods Ilfracombe



LEE CHAPEL & SCHOOLHOUSE



Lee Chapel
(sleeps 5)

Schoolhouse
(sleeps 2)

Charming contemporary self catering accommodation.

A real home from home, in a tranquil setting with private parking in beautiful Lee Bay.



visitleechapel@gmail.com

www.visitleechapel.co.uk

GREETINGS AND FAREWELLS

For the first time ever, we have nothing to report! Despite a request on the Fuchsia List for new arrivals and departures to make contact, no one has been forthcoming, nor have neighbours and friends alerted us to any movements.

We are very sorry if we have missed anyone and we make a plea that, if we have missed you, you make contact with the editors at ian@leedevon.co.uk.

In our small community, it is good to get to know who lives here and it is equally good to welcome newcomers and, sadly, say farewell to anyone leaving the village.



FIRST AID REQUIRED?

Call Bill at The Grampus Inn (with onsite defibrillator) on 862906

Old Maids Cottage

Character 17c , Thatched Cottage in Lee Bay, North Devon.

Visit sykescottages.co.uk for availability and book or for info call Paul at 07741 297004



3 Double Bedrooms, sleeps 6
3 Bathrooms (2 en-suite)
Contemporary extension

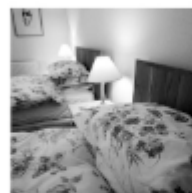


Log Burner
Open plan living area
Modern kitchen facilities



Off road park for 3-4 cars
Enclosed garden
Beach 300m, Pub 100m

MILLFIELD SELF-CATERING COTTAGE - OVERLOOKING LEE BAY - NORTH DEVON

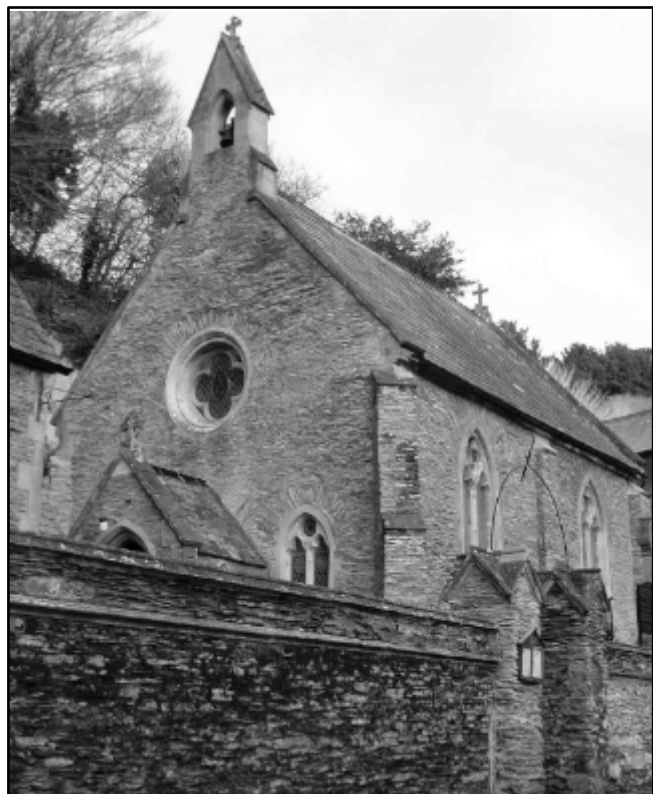


SPACIOUS DETACHED BUNGALOW - SLEEPS 6 IN 4 BEDROOMS - PRIVATE GARDEN - OFF-ROAD PARKING

Large lounge with wood burning stove, conservatory, open plan kitchen and dining room with patio doors leading out to one of the best views in North Devon, making your stay a truly unforgettable experience.

for more information and to book go to: www.millfieldcottage.co.uk

NEWS FROM ST. MATTHEW'S CHURCH



From the scaffolding that surrounded the church for much of September, it would be clear that some major work on the building was in progress. Indeed that was the case. For some time the guttering and downpipes have been giving cause for concern. Some was badly rusted and two significant pieces had actually fallen to the ground. Several of the supports were also in poor condition. So the entire guttering and downpipes on both the front and back of the church have either been replaced or renovated. All the supports were also repaired. Everything was then given 3 coats of paint. The guttering and downpipes on the front of the Old Schoolroom were also in poor condition and they have been replaced and given 3 coats of paint. The church and schoolroom are Grade 2 Listed Buildings so, of course, any repairs must use similar materials to the original. All the guttering and downpipes are cast iron. Everyone can be assured that all new materials are of the same quality (and weight!) as the originals.

Whilst the scaffolding was up, we took the opportunity to replace some slate tiles that were either missing or broken. As well as making its normal bell sound, the

church bell has been making some other peculiar sounds. So, again, the opportunity was taken to inspect the bell and it was obvious that the bell rope needed replacing. This has been done and the bell and its fittings thoroughly oiled. With all this work, the church building is in good condition and, as well as being safe and looking attractive, it should prevent dampness and water coming in for many years to come. We are very pleased that the work has been undertaken to a high standard by Alan Knowles and Chris Jeffery and their sons to whom we are most grateful.

We have now resumed singing during our regular Sunday morning service though we are strongly encouraging the wearing of masks when singing. With the resumption of singing, we are now more or less back to normal. However, we felt that it was still too early to hold our traditional Harvest Festival service when we would expect a large congregation with a choir leading the lusty singing of well known harvest hymns. So harvest was celebrated in a similar way to last year. The church was decorated in the traditional way and was open all day to visitors to enjoy the attractive displays of flowers and produce, and, if desired, bring a contribution for the Ilfracombe Food Bank. Then, as last year, we held a short service with a harvest theme at 4.00 pm but this year with singing outside a hymn before and after the service in the church. We are most grateful to Paul Jagers for leading the singing on his keyboard. Everything went very smoothly with even the weather keeping the rain away at the crucial time! Contributions for the Ilfracombe Food Bank were most generous. As well as large amounts of food left in the church and the hall, cash donations amounted to £203 – a most worthwhile opportunity to help those less fortunate than ourselves.

We are delighted that two weddings have taken place in the church recently. Janine West and Kieran Hanshaw were married on 21st August. Janine has grown up in the village so it was a particular pleasure that she was married in the church. Then, on 16th October, John Scarrott and Rebecca Tunwell were married. John now lives in Barnstaple but the Scarrott family are well

NEWS FROM ST. MATTHEW'S CHURCH, CONTD.

established in the village and, again, it was a pleasure that John's wedding took place in the village church. We wish both couples every happiness in their respective lives.

Looking ahead, Remembrance Sunday this year is on 14th November. The service in St. Matthew's Church will be at the usual time of 8.45 am. It will be our monthly all-age service with some items particularly appropriate for Remembrance Sunday. After the service, at about 9.30 am, there will be a gathering around the War Memorial with the reading of the names on the Memorial, some prayers and the 2 minute silence. Everyone is very welcome to the service in the church or just to the gathering at the War Memorial. It is always a very moving time. After the ceremony around the War Memorial, tea and coffee will be served in the Memorial Hall.

Arrangements for Christmas are still uncertain though the date for the Carol Service will be in the evening of Monday 20th December. What form it will take and whether it will be inside or, as last year, outside, or a combination of both is still to be decided. But please put the date in your diary. Whatever its format, it will be a lovely village occasion. Full details will be circulated in due course as will arrangements for the service at 10.00 pm on Christmas Eve which this year is on a Friday. Hopefully we shall be in the church with a choir to lead the singing. Again, details will be announced in due course.

Ian Stuart, Churchwarden and Vice-Chairman St Matthew's PCC

Middle Campscott Farm

ORGANIC, SUSTAINABLY FARMED AND GRASS FED

Ruby Devon Beef
Hogget Lamb
Artisan Ewes' Milk Cheese

Organic Knitting Wool
Blankets & Throws from our sheep's wool
Knitting Kits

Farm gate sales or free local deliveries for orders over £15.00



Karen & Lawrence Wright
01271 864621
farm@middlecampscott.co.uk



LEE MEMORIAL HALL UPDATE



After a busy summer in the village, Autumn is here once again. The hall is getting back to normal following some occasional events over the summer and more recently our regular bookings have re-started, including some new ones.

Mini Monsters were the first group to start back, albeit outside in the meadow. It has been good to see them enjoying themselves in the sunshine. They will resume inside from October.

During May, Chelsea Wills resumed her holistic yoga classes, held every Tuesday evening.

At the beginning of August, Mishale Boettcher began her Ecstatic Dance session on Monday evenings.

Recently Margaret Hill resumed her Fuchsia Valley Quilters. It was a good turnout and brought some more

normality to the hall. Margaret is no longer running the Patchwork sessions but one of her previous group is planning to run this from the New Year.

The W.I. resumed indoors again in July.

The Watercolour Workshop started in October, it's good to get the painters together again.

On 7 August, Paul Jagers hosted the first musical evening since lockdown ended. It was an event to raise funds for the Syrian child refugees. Gypfunk, a quartet that sounded and sung in French, was enjoyed by all. Mark Presland from M'Larkey, opened the show with some great acoustic guitar music.

In June we held our first committee meeting in the hall, rather than via Zoom. It was a novelty to actually meet up again, even though we were wearing masks.

LEE MEMORIAL HALL UPDATE

Our most recent meeting in September was able to be more relaxed.

Since COVID-19 restrictions began to ease, we started to receive more interest in the hall for various events and bookings have taken off. It has hosted work meetings, private parties, and a couple of weddings. Two more wedding receptions took place in October.

During the summer, we were fortunate to be given some new benches for the meadow, provided by the Ilfracombe Town council, and organised by our councillor Pat Coates. The existing ones had fallen into disrepair and were certainly ready to be replaced.

The not so good news was that the pellet boiler, responsible for our heating and hot water, gave up the ghost. We had suffered a number of problems over recent years, so it wasn't actually a big surprise, but it is a problem we are hoping to fix as soon as we can.

With normality returning, it was decided we should get the hall looking as it used to, with the curtains, pictures and paintings replaced and any maintenance work carried out. A call out to the villagers via The Fuchsia List was a big success and we would like to thank everyone who turned up on Saturday 25 September, we would have struggled without you.

On Sunday 3rd October we held an open day, in conjunction with the church Harvest festival and also had a donation table for the Ilfracombe food bank.

By the time you read this, we hope it will have been a great opportunity for many villagers to finally get the chance to see the new hall floor which was laid in early 2020!

Jane Johncock, Hall Secretary

Amary Farm
Dibbon's Lane
Lincombe
EX34 8LS

Instagram @Amaryfarm

07368 339387
07796 313803



Amary Farm is a no-till organic market garden using agroecological and agroforestry practices to grow fresh seasonal produce for the community.

All grown "in conversion" to Soil Association Standards by local family business.

**Vegetables
Salad
Fruits
Herbs
Cut Flowers**

Sold at the farm gate,
local farmer's markets
and direct to your door.

Pop in and say hello to us
Jon, Zoe & Will Davis

We stock a range of Soil Association approved Organic Composts and Manure

Moorland Gold Compost - 40L Bags
Greenvale Plant Food - 25Kg Bags



Visit our website for more details: www.northdevonorganics.co.uk

EXMOOR'S 'HIDDEN EDGE' - LEE AND BEYOND



A strong contender for the most stunning coastline in England and it is on our doorstep. This wild and rugged landscape is largely unknown and seldom publicised by the media because of its remoteness. It is exactly this, that the 'Hidden Edge' of Exmoor National Park is so very special. Largely unseen by walkers from the coastal footpath, high on the rolling hills hundreds of feet above, it can be appreciated from the sea aboard a small, specialist passenger boat.

In harmony with nature, colonies of rare seabirds nest in their hundreds – Guillemot, Razorbill, Kittiwake, Fulmar, Cormorant, Oyster Catcher, Herring Gulls, nesting on the cliffs not rooftops. The largest gull, the Great Black Back, wingspan of over a metre, is also seen. Raven, Buzzard and Peregrine Falcon also nest on these sheer and majestic cliffs. Many other seabirds will be seen with a good chance of seeing seals, porpoise, dolphin maybe a rare Sunfish along the way.

The dramatic and beautiful coastline has an interesting historical past going back centuries. The cliffs at Great Hangman at 800' are the highest in England, honeycombed with mine workings, iron, lead, copper, tin and silver were mined. The silver mined at Combe Martin was of such high quality that Henry VIII, in 1524, decreed that the silver become a Royal Silver. Shipbuilding, fishing and much trade were conducted from the harbours and coves. The men of Exmoor were

tough and a very special breed, braving the fierce tides of the Bristol Channel, the second highest rise and fall of tide in the world, to eke out a living along this inhospitable and treacherous coast, where piracy and smuggling was common place.

Viewed from the sea in spring, summer or autumn, the ever changing seascape can be tranquil in parts, as Combe Martin, Woody Bay, Lynmouth, Porlock and Minehead; at others breathtaking, Heddon's Mouth, Lee Bay and the Valley of Rocks. The colours in the everchanging light playing upon the sea and cliffs are spectacular. Rock formations of the headlands hide secret coves and caves beneath the precipitous heights. Waterfalls tumble to the sea, Sheracombe Falls (60') beneath Holdstone Down, The Inner Sanctum (120') and Hollowbrook (200'), the latter being the highest waterfall in Southern England. Numerous caves are to be found, particularly at Little Hangman, Elwell Bay and at Wringapeak. These caves are only accessible at low spring tides and with a guide.

It is a fact, during World War II, at Sheracombe Falls, crew members from German U-boats operating in the Bristol Channel under the cover of darkness at high tide, would row unseen (not too difficult) in rubber boats to the falls to collect fresh water to replenish dwindling stocks. This story was confirmed in the early 1990s by the son of a U-boat Captain aboard my boat the

EXMOOR'S 'HIDDEN EDGE' - LEE AND BEYOND, CONTD.

'Devonia Belle' with a party of German students; his name was Wolfgang Martens. Uncannily also on the boat that day was Les Gear, a retired Ilfracombe boatman.

I have the numbers of the U-boats that operated in the Bristol Channel seeking out ships to torpedo and sink. I

am led to believe that none of these boats survived the war. Wolfgang's father survived the war and was living in the Frisian Island in the early 1990s.

After the war, in the 1950s, Wolfgang's father visited Ilfracombe and engaged a boatman to sail him to Freshwater East, Sheracombe Falls. Having only seen the outline of Great Hangman at night from his U-boat he told the boatman that he had fulfilled his dream to return to this beautiful place - the 'Hidden Edge' of Exmoor.

I share with you this remarkable and true story as told to me some years before by Les Gear, the boatman who happened to be on my boat with Wolfgang Martens, son of the U-boat captain, in the early 1990s. Wolfgang confirmed the story. Alas all three have now passed away.

Alan Kift, former Lee & Lincombe resident

[Photos from a collection provided by Matt Dearden.]



Let us find the right mortgage for you and your pocket

With access to the whole of market, including large high street and small niche lenders, we'll ensure you get the most suitable mortgage for you.*

*Your home may be repossessed if you do not keep up repayments on your mortgage.

Simply contact Town & Country Financial Advisers to discuss your options.

01769 574674

info@devonfinancialadvisers.co.uk

16-18 East Street | South Molton | EX36 3BU

TOWN & COUNTRY

devonfinancialadvisers.co.uk

HISTORY OF THE LINHAY AND THE COVER PHOTOGRAPH

Following on from Pat Coates' article in our Summer 2021 issue about the restoration of the Linhay into The Applestore, longtime reader and former Lee resident Robert Daniel writes about his memories of the Linhay when it was simply 'The Stable' at the Old Farm (now The Grampus Inn).

It was great to see the new roof and doors, etc. on the Linhay, which used to be called just 'The Stable'.

In the 1950s I might well have been one of the last people to have ridden the last horse to be stabled there. It was a working cart horse named "Doll" which belonged to my Grandfather Farmer Armstrong of the Old Farm (The Grampus Inn).

I remember one day I was asked to ride Doll up to the blacksmiths on the Mortehoe road for re-shoeing, no saddle or anything fancy like that, just an old piece of sacking over Doll's back to sit on.

These days I often wonder how Doll descended the steep Cliff Hill on the return journey without sliding most of the way down with her new shoes!

The [cover] photo was taken by me and shows Doll with my late brother Richard (Dick) Daniel, on the cart, and the late Jim Cousins in the dutch barn. The girl on the left of the photo is my sister Madalene. The dutch barn used to be where The Grampus car park is now.

Robert Daniel





Mike Turton BUTCHER

Est. 1855 146 HIGH STREET, ILFRACOMBE

Devon Ruby Red Beef & Lamb
from Combe Martin

Local Pork & Bacon
from Holsworthy

Free Range Poultry
from Creedy Carver, Crediton

Our own sausages & burgers

A range of local cheeses
and cooked meats

We also have a range of pasties, pies
and homemade scones

Visit or telephone/email your order for next day collection



01271 863643
miketurtonbutcher@gmail.com



40 High Street, Ilfracombe
Phone us on 01271 863105



Daily deliveries to
businesses and homes
in Lee, Ilfracombe,
Combe Martin and Berrynarbor

We also sell Gift Vouchers,
Fruit Baskets and Flowers

The Old Schoolroom Craft Gallery



Contemporary and Traditional
local arts and crafts

Shop online www.wildcoast.co.uk

Follow on Facebook to keep up to date with
upcoming craft workshops and events



THE CRAFTY BEER SHOP BARNSTAPLE

Craft Beer | Local Beer | Gins | Spirits | Wines | Gift Vouchers



Browse our shop in store or online
Click | Buy | Collect | Deliveries to your door



f @thecraftybeershop @@craftybeershop @craftybeershop
www.thecraftybeershop.com | 01271 523966
15 Butchers Row, Barnstaple EX31 1BW

'WELCOME BACK' WITH LEE'S NEW ADDITIONS

Ilfracombe Town Council was asked by North Devon Council for proposals for funds being made available to Councils by the Government to support councils in making communities more attractive for locals and visitors following COVID-19. The fund is aptly called 'The Welcome Back Fund'.

I was approached to see if there were any suggestions for Lee and Lincombe so I put out a request to LLRA for suggestions and also had some of my own, including a bench and planters for Lee toilets.

We were delighted to get five lovely benches from St John's Garden Centre and are awaiting six half-barrel planters. We are asking for money from The Welcome Back Fund to get these filled and are hopeful this will happen in the next few weeks.

Lee should look very inviting next Spring!

Cllr Pat Coates

[Images provided by Pat.]





A WILD VISION FOR SLADE MEADOW NEAR YOMER WOOD



We are the new owners of the plot of land known as Slade Meadow near Yomer Wood, and thought we would introduce ourselves and outline some of our plans for the land. My name is Anne-Marie and I grew up in Berkshire. I work as a horticultural tutor at Ruskin Mill College, a therapeutic college for young adults with behavioural and learning difficulties. My partner Gregory is originally from Somerset and works as a self-employed gardener. We currently live together in Stroud, Gloucestershire, along with our three cats. We have been organic beekeepers for many years and we've

long had the dream of creating a beautiful plot for all bees and wildlife. Gregory is an accomplished photographer and has given talks on honeybees and what to plant through all seasons for pollinators.

This winter/spring we will be planting up some of our plot - a native hedgerow, various copses of mostly native trees, and a small orchard of mixed heritage varieties of apples, pears and plums. We will retain some of the grassland and will also be planting more wildflowers, shrubs (including fuchsia!), specimen trees, and medicinal plants. I am a dyer and felter, and have been experimenting with dyeing wool from the Cotswold sheep we have on the farm where I work. I hope eventually to plant a dye garden for my textile colour experiments.

Anne-Marie Dossett



Super Fast Unlimited Broadband

Contact : Tony Watkins

07496 179 465

tony.watkins@airband.co.uk



Sun Penny Cottage

**Characterful Cottage with a Log Fire
in Picturesque Lee Bay**

4 Bedrooms - Sleeps 7 - Dog Friendly

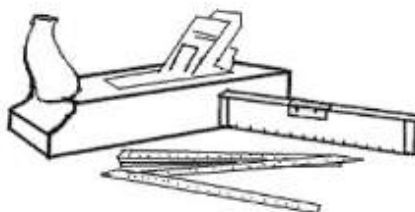
- Tastefully Refurbished, Light and Airy
- Cosy Aga Log Burner
- Nespresso Coffee Machine
- Short Walk to the Beach
- Driveway Parking 2 Cars
- Enclosed Streamside Garden



Email sunpennycottage@gmail.com
or visit www.sunpennycottage.co.uk

Real Craftsmanship

All kinds of bespoke Woodwork
Kitchens, Doors, Windows, Furniture, etc.
New builds and repairs
Over 30 years of experience



Holger Meyer
real-craft
Tel: 0774 558 7667

facebook.com/holgersworkshop
Website: real-craft.eu
Email: holger@real-craft.eu

PLANTING LAND ABOVE YOMER WOODS - UPDATE

We have now successfully secured our woodland trust subsidised trees! To anyone who would like to get involved in the tree planting, we'll be supplying lunch and hot drinks for helpers from the 24th-28th November. All you'll need is a spade, warm things, and

waterproofs. Contact one of us for more details and we look forward to seeing you.

Phil Johncock and Chelsea Wills; Craig and Debs Erskine

LEE & LINK'EM NEWS INFORMATION AND CONTACT DETAILS

Our thrice-yearly newsletter is delivered free to residents, and available to buy at 75p from The Grampus Inn or The Old Schoolroom Craft Gallery & Gift Shop.

We offer UK postal annual subscription (3 issues) too, delivered to your door for £6 per year (as of Summer 2021). If you would like to subscribe, please contact the editors.

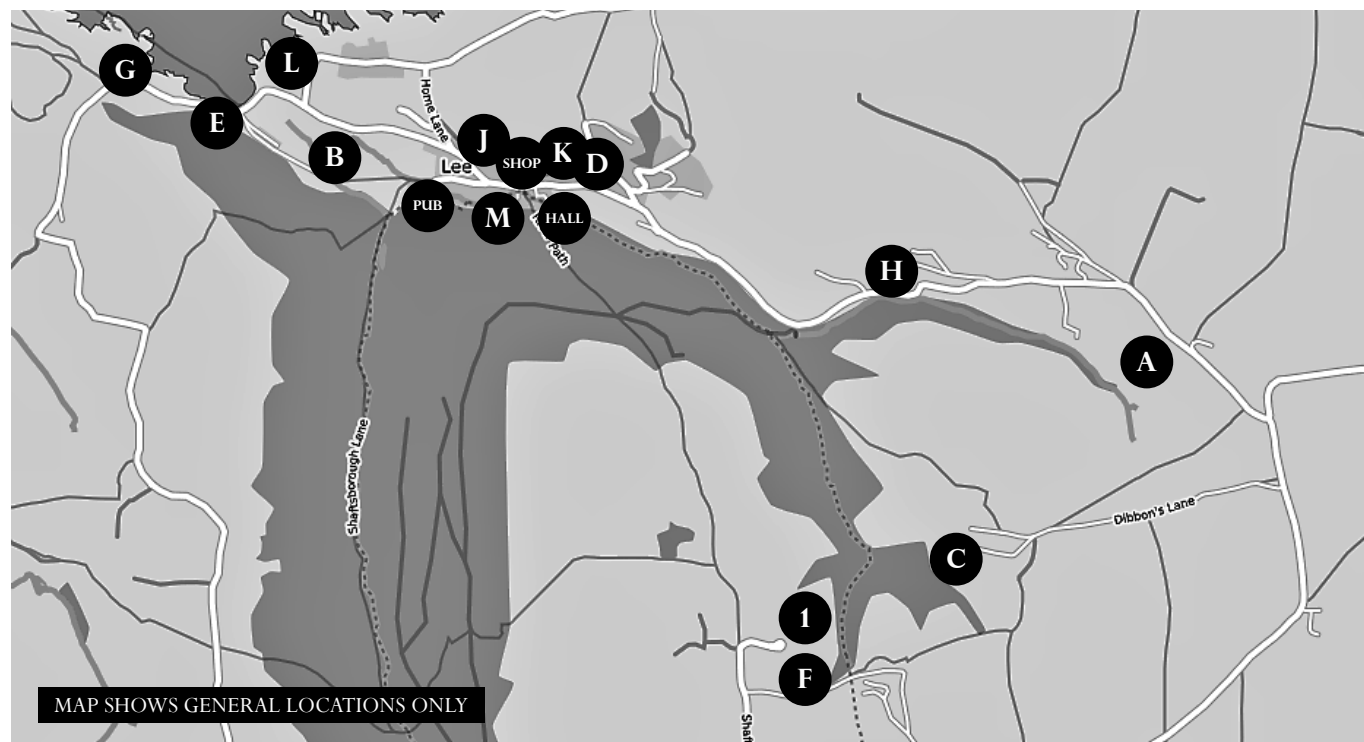
Thanks to sponsors, the Lee & Link'em News continues to be freely available online to read and/or download. Please visit www.leebay.co.uk and follow the links.

Editorial team	Ian & Cynthia Stuart Gina-Luisa Hilborne Heather Booker	01271 863396 / ian@leedevon.co.uk gina@loveleebay.co.uk advertise@loveleebay.co.uk
-----------------------	---	---

Production	Ian & Cynthia Stuart	Advertising Heather Booker
-------------------	----------------------	-----------------------------------

Delivery teams *Many thanks to our delivery teams. If you would like to help with delivering the News, one of the editorial team would be delighted to hear from you.*

LEE & LINCOMBE ACCOMMODATION & SERVICES GUIDE



VILLAGE SERVICES

- pub. The Grampus Inn - Bill Harvey _____ (01271) 862906
- shop. The Old Schoolroom Craft Gallery & Gift Shop - www.wildcoast.co.uk - Louise Thompson _____ (01271) 864067
- hall. Lee Memorial Hall - for hire: leehallreservations@gmail.com - Martin Johncock _____ (01271) 269751

BED & BREAKFAST

1. Shaftsboro Farm - www.shaftsboro.co.uk - Margaret Kift _____ (01271) 865029

SELF CATERING (MAX. PER UNIT)

- A. Lincombe House (2,6,5) - www.lincombehouse.co.uk - Richenda S Carter _____ (01271) 864834
- B. Chapel Cottage on Beach Lane (9) - www.chapeltottagelee.co.uk - Ginny Potts _____ (01271) 867212
- C. Lower Campscott Farm (3,4,4,4,5,6,6,8) - www.lowercampscott.co.uk - Kathy & Tony Mortimer _____ (01271) 863479
- D. Rose Cottage (10) - www.rosecottagelee.co.uk - Ginny Potts _____ (01271) 867212
- E. Beach House (9) - www.beachhouseinlee.com - Ginny Potts _____ (01271) 867212
- F. Shaftsboro Farm - www.shaftsboro.co.uk - Margaret Kift _____ (01271) 865029
- G. Damage Hue apartment (2+2) - www.damagehue.co.uk - Julien Busselle _____ (01271) 862876
- H. Lee Chapel (5) & School House (2), combined (7) - www.visitleechapel.co.uk - Ginny Potts _____ (01271) 867212
- J. Old Maids Cottage (6) - www.sykescottages.co.uk/1022678 - Paul Hey _____ 07741 297 004
- K. The Old Vicarage (15) - www.theoldvicaragelee.com - Amanda Robertson _____ 07973 963 887
- L. Millfield (6) - www.millfieldcottage.co.uk - Louise Morris _____ bookings@millfieldcottage.co.uk
- M. Sun Penny Cottage (7) - sunpennycottage.co.uk - Trevor Huggins & Kathryn Hone _____ sunpennycottage@gmail.com

The opinions expressed by authors of the articles in the Lee & Link'em News are not specifically endorsed by the editorial team which cannot be held responsible for them.

SPRING 2022 ISSUE DEADLINE - 01 FEBRUARY 2022

Articles typed in an email or DOC format and emailed to gina@loveleebay.co.uk. No CDs, disks, drives or handwriting please.

ALL ADVERTISING MUST BE PAID FOR BEFORE THE COPY DEADLINE OR IT WILL NOT APPEAR.