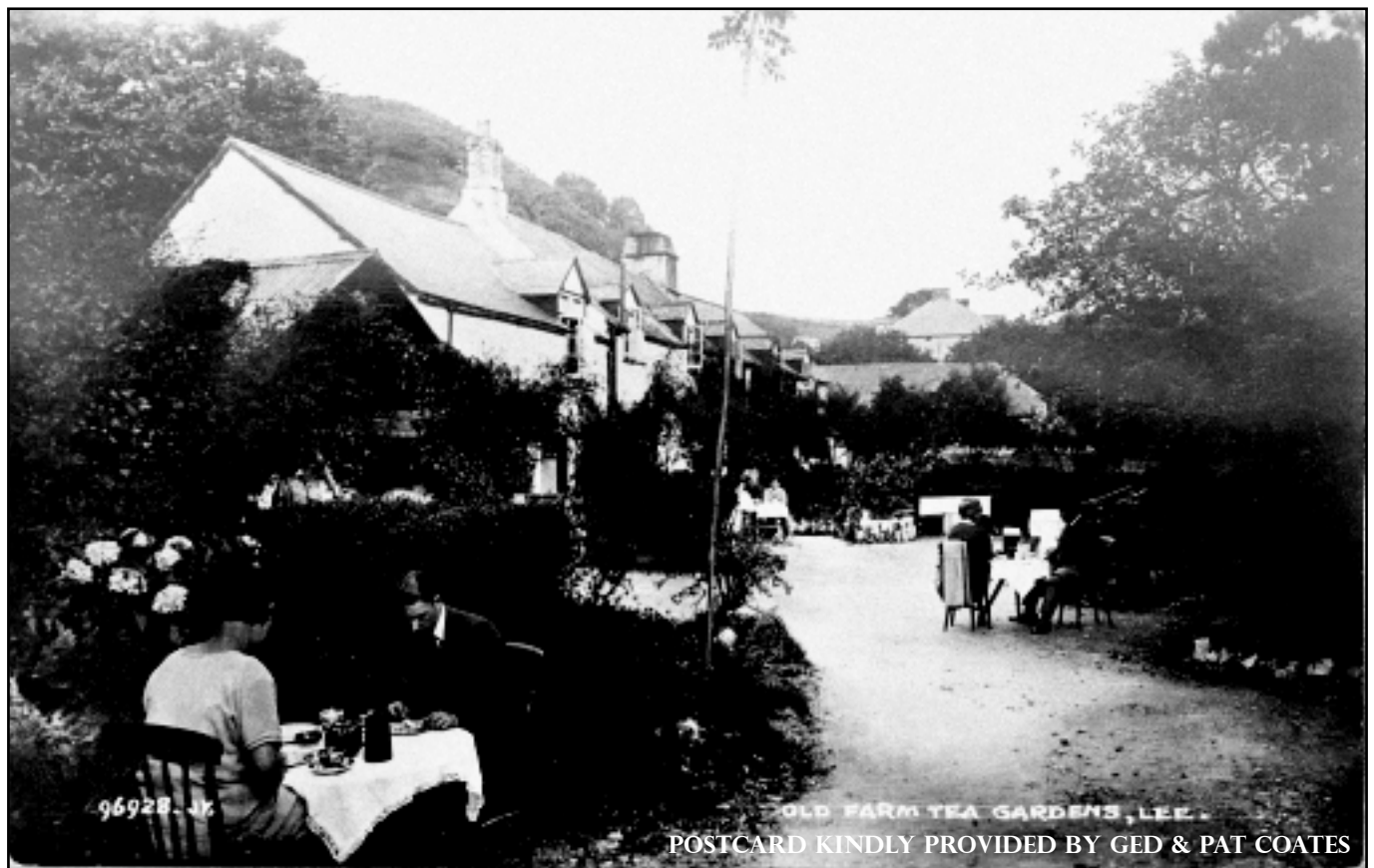


FOR THE RESIDENTS OF LEE & LINCOMBE VILLAGES
AND SURROUNDING AREAS AND OUR VISITORS

LEE & LINK'EM NEWS

AUTUMN 2019

75P



TAKING TEA IN THE OLD FARM TEA GARDENS AT LEE
- NOW THE GRAMPUS INN

www.leebay.co.uk

LEE & LINCOMBE: 2019 & 2020 DIARY DATES

Thursday 24 October 7.30 pm	Lee Flower Show AGM – Lee Memorial Hall
Wednesday 30 October 8.00 pm	‘The Man Who Planted Trees’ – Lee Memorial Hall. A Beaford Arts promotion performed by Puppet State. Please see further article for info.
Sunday 10 November 8.45 am	Remembrance Sunday service in St Matthew’s Church, followed by Act of Remembrance at the War Memorial at about 9.30 am
Monday 11 November 8.00 pm	‘Devon Hedges and Trees’ – The Grampus. A talk by Rob Wolton. A Beaford Arts promotion. Please see further article for info.
Saturday 16 November 7.30 pm	‘Bushpig’ – Lee Memorial Hall. Performance promoted by Paul Jagers in support of Friends of North Devon Families. Please see further article for info.
Thursday 19 December 6.30 pm	Village Carol Service in St Matthew’s Church, followed by refreshments in the Memorial Hall
Tuesday 24 December 10.00 pm	Christmas Communion Service in St Matthew’s Church
Saturday 25 January 2020 7.30 pm	‘Syrinx’ duo – Yoga Barn, Lincombe. Promoted by Paul Jagers in support of Friends of North Devon Families. Please see further article for info.
Saturday 9 May 2020 afternoon	75th Anniversary of VE Day celebrations in Memorial Hall and meadow. Reserve the date. More information to follow.

REGULAR EVENTS

Thursday 24 Oct; 21 Nov; 19 Dec 11.25am - 12.00pm	Devon County Mobile Library – Lee Memorial Hall car park
1st & 3rd Mondays 9.30 – 11.30 am	‘Mini-Monsters’ – Memorial Hall: Term time only. Please always check the ‘Mini Monsters Lee’ Facebook page for changes of dates and other details. (Joe and Jen Steer 07877 465 323)
Fortnightly Wed & Thurs 10am-4pm	Patchwork and Quilters groups – Memorial Hall (Margaret Hill 864257)
2nd Wednesday 10 am – 4 pm	Watercolour workshops – Memorial Hall (Brenda Keeble 267583)
Tuesday 5 pm – 6.15 pm Tues 7 pm-8.15; Thurs 6.30-7.45 pm Thurs 10.00 – 11.15 am	Calm Yoga. This and other classes at Yoga Barn, Lincombe Breathe and Flow Yoga Gentle Flow Yoga (Contact Alex Giffoni 866743)
Friday evenings from 8.00 pm	Open mic nights at the Grampus

Other events may take place. Watch out for information on the Fuchsia List or on posters.
If you would like your event included in the next edition, *please contact a member of the editorial team.*

Please visit www.leebay.co.uk for the regularly updated calendar.

GREETINGS AND FAREWELLS



Matt and Caz Paul purchased St Eloï in March and are seeking to rebuild the house with a sympathetic new

build. They run their own generator hire business (Powertek Services Ltd) at Portishead in North Somerset. After many holidays in the area, it is their dream to spend more time here and ultimately live here all the time. They have 3 sons – Harry (17), Jack (15) and Elliot (10), as well as 2 dogs – Woody (Pointer) and Enzo (Pharaoh Hound). They all love being outdoors in this stunning area either walking, or riding bikes or being on the beach. Matt even proposed to Caz on the coast path here! They have found all their neighbours to be very welcoming and they look forward to many years of happiness in Lee.

We are also very pleased to welcome two new generations of the Cameron family to The Haven which has belonged to the family for several generations, most recently by Allan. Now Mike (Allan's son) and Miranda Cameron have moved here from Bristol with their two daughters Isla (9) and Becca (7), along with a 4 month old yellow Labrador called Clover. They moved here a couple of months ago and say that Lee is a lovely place to live and everyone has been extremely welcoming. Having Clover has helped them meet lots of people on their walks! Isla and Becca are very happy here and are now well settled at Georgeham school.

THE CRAFTY BEER SHOP
BARNSTAPLE

Craft Beer | Local Beer | Gins | Spirits | Wines | Gift Vouchers

Browse our shop in store or online
Click | Buy | Collect | Deliveries to your door

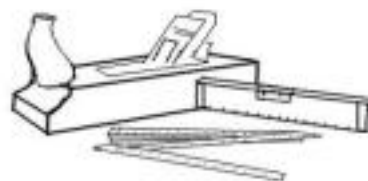
f @thecraftybeershop @craftybeershop @craftybeershop
www.thecraftybeershop.com | 01271 523966
15 Butchers Row, Barnstaple EX31 1BW

FIRST AID REQUIRED?

Call Bill at The Grampus Inn (with onsite defibrillator: 862906).

Real Craftsmanship

All kinds of bespoke Woodwork
Kitchens, Doors, Windows, Furniture etc.
New build and repairs.
Over 30 Years of Experience



Holger Meyer
real-craft
Tel.: 0774 558 7667

facebook.com/holgersworkshop
Website: real-craft.eu
E-Mail: holger@real-craft.eu

NEWS FROM ST. MATTHEW'S CHURCH

As usual, Harvest Festival went well though numbers were down a bit this year. The theme this year was 'Save our Seas' so this gave an opportunity to celebrate in the traditional way the harvest from our farms and the land with concerns about pollution of the seas. Many of those attending brought examples of objects – good and bad – collected from the village beach so that fine specimens of seaweed were mixed with bits of plastic and other debris. In his talk, the Vicar was able to highlight many of the issues of the misuse of the seas through the objects that had been collected. Many people had also brought along perishable and non-perishable food which was displayed in the church and, like last year, was given to the Ilfracombe Food Bank along with the money in the collection.

A superb Harvest Loaf had been made by Gina-Luisa and carried to the front of the church by Jolee (pictured below) at the beginning of the service, and the singing of familiar hymns was again led by the choir consisting almost entirely of people from the village. After the service, we went to the Hall to enjoy the fine Harvest Supper which is always a treat to look forward to and enjoy. It was a great occasion this year and is a real joint effort of many people making and preparing the food,



arranging the Hall, serving the food and wine through to the willing band of helpers doing the washing and clearing up. The service and supper are very much a village occasion. If you haven't been before, please come next year!

The next special occasion is Remembrance Sunday on 10 November. The service in St. Matthew's Church will be at the usual time of 8.45 am. It will be our monthly all-age service with some items particularly appropriate for Remembrance Sunday. After the service, at about 9.30 am, there will be a gathering around the War Memorial with the reading of the names on the Memorial, some prayers and the 2 minute silence. Everyone is very welcome to the service in the church or just to the gathering at the War Memorial. It is always a very moving time.

Christmas still seems a long way ahead but, as usual, there will be special services in the Church. The Village Carol Service will be on Thursday 19 December at 6.30 pm, followed by a social gathering in the Memorial Hall with the refreshments kindly provided by the Hall committee. This is always an excellent village occasion with everyone welcome, so put the date in your diaries. On Christmas Eve, Tuesday 24 December, at 10.00 pm, there will be the traditional Christmas Communion service in the candlelit church with the choir leading the singing. No doubt the church will be full for both services and everyone is welcome.

I have mentioned before that we have an ongoing problem with rock falls on the cliff face behind the church. Luke Irvin and Billy have done a good job stabilising the cliff face and it is in good condition now. Their work does mean that there is quite a bit of rock of differing sizes, some quite big, some quite small. If anyone would like any of the stone for their garden or any other purpose, you are most welcome to have some absolutely free of charge provided you take it away. Please get in touch with me if you would like to see what is available. For obvious safety reasons, the door leading to the back of the church is kept locked, so you will need to make contact before coming to see the rock.

Ian Stuart, Churchwarden and Vice-Chairman
St Matthew's PCC

LEE MEMORIAL HALL UPDATE



Autumn has well and truly arrived in the valley along with rather too much rain! Looking back over the events in the village hall and meadow during the summer, I am reminded how much the generally dry and sunny weather enhanced them.

Considering how busy the hall is with our regular users, i.e. patchwork, quilters, watercolour workshop, church meetings/refreshments and Mini Monsters, it is always surprising how we fit in all the other activities and events!

Following the Spring Fair we had the first of three summer weddings, all of which used the hall and meadow, and we're always complimented for such a lovely setting.

In early June the hall was booked for an antiques valuation day. We hope the gentleman organising this was happy with his turnout and, for his customers, their results.

The Beaford Arts production 'Hefted' was performed on 8 June. It was an interesting and historical play based on life in North Devon, although sadly it was to a small audience. We should try to support these productions as it would be disappointing if Beaford Arts no longer chose to use our hall for future productions and events.

During the summer a couple more children's parties were held in the hall. At the beginning of July one of our residents held a children's centre meeting here as well. There has also been a birthday party and a family party, both celebrating a great age and milestone anniversaries.

The annual Flower Show took place on 25 July. Such a delightful setting for all the beautiful flowers and various edible and decorative entries.

Our long standing and amazing treasurer Edna Thompson has again written her report following our annual Arts & Crafts Fair, featured later on in this edition of the News.

On the 20 July we held an additional fund raiser, Ferret Racing! Again, Edna's report is included separately in this issue.

Into September and the Harvest Festival was held on 15 September in our beautiful church. As usual, all the congregation were invited over to the hall for a wonderful supper afterwards. Many thanks to all those involved in making the dishes and giving their time on the evening. It is a brilliant event and such a lovely way to catch up with friends and neighbours.

Remember you can always book the hall by visiting our website: www.leememorialhall.co.uk where you can check availability on the hall calendar and find all relevant information.

Please support our events if you can, we need to keep fundraising in order to be able to retain this beautiful building and pay for the upkeep on both it and the meadow.

Jane Johncock, Hall Secretary
with special thanks again to Edna Thompson



Sun Penny Cottage

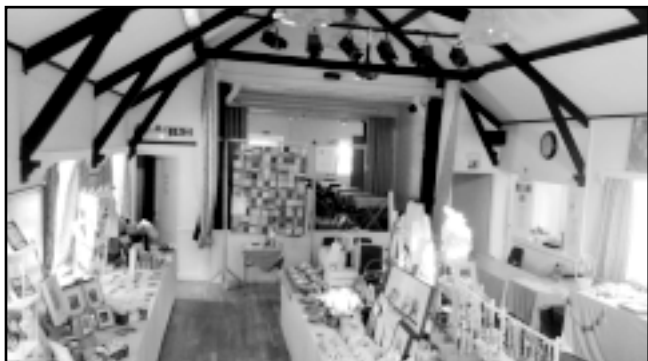
Characterful Cottage with a Log Fire
in Picturesque Lee Bay

4 Bedrooms - Sleeps 7 - Dog Friendly

- Tastefully Refurbished, Light and Airy
- Cosy Aga Log Burner
- Nespresso Coffee Machine
- Short Walk to the Beach
- Driveway Parking 2 Cars
- Enclosed Streamside Garden

Visit driftwoodcottages.co.uk for availability and to book or call 07950 994 729 for more details

ARTS & CRAFTS FAIR REPORT



It was once again a very successful event with more than 20 local exhibitors showcasing beautiful wood turned items, exquisite hand stitched pictures, colourful stained glass decorations, delightful felt work, lovely patchwork and quilting, handmade soaps, attractive handmade cards, funky earrings and necklaces, beautiful handcrafted jewellery made with semi-precious gem stones, handmade gifts in Harris Tweed and many other attractive items. There was a lovely handmade quilt as first prize in the grand draw, as well as many items kindly donated by some of the exhibitors.

Every day there was a tempting spread of homemade cakes and scones with freshly-made sandwiches, ploughman's and wraps, so something for everyone to enjoy.

We had many compliments on the wonderful display of craftwork as well as the delicious refreshments with many visitors returning during their holiday to enjoy the lovely cakes and cream teas!

There are many people involved in organising and running this annual event so a huge THANKYOU to everyone who played a part as without all of our crafters, bakers, kitchen helpers and everyone else who helped it would not be possible to hold the fair which raised a fantastic £3,882 towards maintaining our lovely Memorial Hall. Also 'thank you' to everyone who visited the fair – during the sixteen days we welcomed almost 1300 visitors!

Report and photo by Edna Thompson

FERRET RACING IN LEE MEADOW



On a sunny day in August we held a fun afternoon with the well-known 'ferret man' Terry Moule! Terry travels around Devon to many of the big country fairs with his ferrets so coming to Lee was quite a different venue for him. He arrived with his precious cargo and set up all of the colourful runs - there were some sideshows, a refreshment tent serving cider, beer and soft drinks and a tasty sausage sizzle available throughout the afternoon.

The gate opened at 2pm and visitors were invited to place their bets with the first race starting at 2.15pm. Terry chose some little helpers from the audience and when Terry blew his whistle they had to lift the cage trap doors up and the ferrets raced through the coloured pipes with everyone cheering and shouting to encourage the ferret they had backed to be the winner of the race.

Terry then had the job of catching each of his ferrets and pop them back into their basket before selecting the next six ferrets ready for the next race. This caused some amusement as of course the ferrets were enjoying a bit of freedom but Terry is such an expert that none of them escaped into the meadow!

So the afternoon continued with those whose ferret had won its race collecting their winnings. There was an opportunity to name a ferret and sponsor a race and certificates were duly awarded to the sponsors and those who had named a winning ferret.

During the afternoon we were entertained by four local youngsters playing music gently in the background – they did an excellent job so a big THANK



YOU to them as well as to everyone involved in the event and of course to all of our lovely locals and visitors.

We made £720 after expenses for the Memorial Hall funds and we hope you all enjoyed your afternoon.

Report and photos by Edna Thompson

LEE WI REPORT



Another year draws to a close and we can look back on a varied range of activities.

We have been entertained and enlightened on a variety of topics, from finding out more about dementia to the incredible difference talking books make to the lives of partially sighted and blind people.



We have enjoyed the company of old friends such as Sue Ashmole introducing us to her adorable alpacas, and Natali Purdy telling us about life in El Salvador.

We made new friends with local author Ruth Downie who, suitably clad, told us about life in Roman Britain

and how she writes her intriguing Roman whodunnits.

Activities in the hall included joining in with the Red Petticoats Ladies Morris group and walking around Britain, from our chairs, in the company of Laurence Shelley.

We also went out and about, down to the beach to help with the 'clean up', to visit Sue's alpacas and indulge in a cream tea, to the historic house Hall near Bishop's Tawton and another cream tea, to Chivenor to hear the incredible Military Ladies choir and eat yet more cake! Some of us ventured to Umberleigh to learn the skill of willow weaving, while others played croquet for a day in Barnstaple.



Mainly though we enjoyed ourselves, the meetings are pretty relaxed and we'd love more ladies to join us.

We are looking forward to a new year of activities, outings and interesting speakers. Guests are always welcome to our visits and our meetings which are held from 7.30pm in the Memorial Hall on the 2nd Thursday of each month. Our 2020 programme will be in the village noticeboard from January, have a look and see if any meetings tempt you to come along -you'll be made very welcome.

The Lee WI Committee

SELF CATERING - PROPERTIES OF TRUE CHARACTER AND CHARM - LEE VILLAGE



Lee Chapel & Schoolhouse

HOLIDAY ACCOMMODATION

For more information, video tours,
rates & booking details, please go to
www.visitleechapel.co.uk




Lee Chapel - sleeps 5 (+cot)




The Schoolhouse - sleeps 2 (+cot)

LEE VILLAGE FLOWER SHOW REPORT



Another year, another successful Flower Show! This past July we had another hectic 2 days as we readied ourselves for our favourite event of the year, our prestigious Flower Show. We had altered a few things here and there, and we were all anticipating the amazing entries we were sure to have. In particular I was extremely excited for the new Showstopper category in the Domestic Section...but more on that later.

As some might know, the Flower Show is a year in the making, we start planning for the next year as soon as the previous one has passed. With our new committee member in our midst, my sister Martha was pivotal in creating some great themes and names for the Floral Art and Handicraft sections. Though, she later regretted coming up with 'Borrower's Bouquet' as she never considered the fact that it should therefore be a bouquet and not your usual arrangement of flowers, something that caught quite a few of our competitors out this year. And we shouldn't forget this year's theme, the Moon Landing's 50th anniversary (in case some of you are still wondering

why we had the moon on our posters). Which inspired some great pieces in the Handicraft section, as well as in the Domestic.

Now, unfortunately for committee members like myself who enter a measly fifty or so things, the day before is always a fun day full of stress and caffeine intake, especially when you have multiple cakes to bake but have to spend the morning at the Hall helping to set everything up. Trust me, trying to remember where all the tables go, which tablecloths to use, and trying with your sister to move a spider infested display stand from the garage is always the highlight of the whole event for me. You guys really miss out there. I am forever grateful that our wonderful secretary, Carolyn, and treasurer, Bryan, stay to shepherd all the other entrants in the afternoon and evening, while I rush home and strap on my apron.



The morning of the show is also an early start for everyone. I always like to make my sponge cakes in the morning like an insane person who doesn't need sleep and wakes up before dawn. It's the best time to raid your garden for flowers, and to finish all your last-minute projects, not that I would know anything about that *cough, cough*. The best feeling in the world is when your final card is laid at the Hall, and all your entries are there, and you can sit back and watch everyone else desperately running the length of the hall trying to find out where exactly to put their prized Streptocarpus and runner beans.

Though for me, the most stressful item to bring to the Hall was my dad's Lego replica of the Saturn 5 rocket, he'd been working on it for weeks, and with the Moon Landing



LEE VILLAGE FLOWER SHOW REPORT, CONTD.



theme, we thought it would be great to display at the Hall. However, getting it there was the issue, especially when said father threatened certain ramifications if the model didn't make it from A to B and back again in one piece. Suffice to say, in the first minute of travel the top had already smashed into the dashboard, and I spent the next five minutes rooting round the footwell for Lego pieces and assembling it back to pristine condition. Although it now rattled. We only found out several days later that I had indeed lost one piece in the footwell, thankfully it was there, otherwise I would never see the sun again.

Back to the Flower Show. It was a delight to see all the marvellous entries, and I want to thank everyone who entered. My eye was of course drawn to the Showstopper section, and it did not disappoint. We had some amazing cakes on display. Bridget Gear from Ilfracombe created an amazing Moon Landing space themed cake, while our very own Gina-Luisa created a chocolate masterpiece, my caramel cake was also pretty good.

Unfortunately, something we will change for next year, the judge was so amazed by the decorations she thought she wouldn't ruin any of the cakes by taking a slice. However, a little birdie told me that the pink sprinkled cake, while it may not have looked as fanciful on the outside, was a rainbow delight on the inside. Something we all missed out on. As for me, I must admit, I did focus on the taste of the cake over the decoration. So next year, the cakes will be judged on not only their outside appearance but



their inside as well. Someone even threatened to enter a decorated box next year to make sure.

Another bone of contention was the Chairman's Choice Fuchsia. Now a big well done to Geoff Potts for managing to grow them so well, and for taking 1st, 2nd, and 3rd place. There were a few mumblings that it was unfair that all three places went to the same person, and that perhaps we should limit how many entries a person can have for the fuchsias. In answer to this, I will firstly say that the judge could tell that all three were from the same grower and awarded them anyway. And secondly, to my knowledge, basically everyone is persuaded to buy more than one fuchsia, and a great many enter more than one fuchsia. So, to sum it up – we're not going to limit how many fuchsias people can enter, the best Fuchsias won, and you can always enter as many fuchsias as you like to increase your chances of winning too.

Overall it was a great day. After the judging – a special thank you to our judges – the prize cards were written up, the points added. Was it finally the year, after four years, that I would win a trophy? Well, given the fact that my biggest rival so far, Eleanor Scarrott – whoever she is - was unable to enter this year (mwhahaha, mum, mwhahahaha) it did open up the field considerably. And would a brave Lee victor rise up in the domestic section to win the trophy back from our Ilfracombe competitors?

It was great to see lots of people from the Village there as well, having a look around the show and all the entries. We had a great afternoon and a successful raffle – thank you to Eric there. Ivan Francis the Chairman of Ilfracombe in Bloom also graced us with his presence to award the trophies to all the successful winners, so a big thank you to Ivan as well.

Now the moment you've all been waiting for, the Winners and Runners up list.

LEE VILLAGE FLOWER SHOW REPORT, CONTD.

Section A – Floral Art: Bowl

Section B – Domestic: Replica Cup

Section C – Produce: Produce Cup

Section D – Cut Flower: Tugwell Cup

Section E – Pot Plants: Ken Brown Cup

Section F – Handicrafts: Anne Duke Memorial Cup

Best Fuchsia Exhibit in show: Memorial Hall Cup

Best Perennial Exhibit in show: Cliffe Cup

Best Tasting Fruit and Vegetable: Booker Cup

Class 45 – Specimen rose: Rose Bowl

Class 64 – Chairman's choice Fuchsia: Glass Trophy

Highest Number of Points overall: Challenge Cup

Section G – Children: Children's Cup

Ann Wallace

Runner up: Margaret Bannister

Gina-Luisa Hilborne

Runner up: Lucy Scarrott

Bridget Gear

Runner up: Alan Bannister

Lucy Scarrott

Runner up: Ann Wallace

Lucy Scarrott

Runner up: Bryan Russell

Martha Scarrott

Runner up: Lucy Scarrott

Geoff Potts

Bryan Russell

Alan Bannister

Marion Thom

Geoff Potts

Lucy Scarrott

Runner up: Bridget Gear

Jennifer Hewitt

Runner up: William Hewitt

CHILDREN'S AWARDS

Ages 8 or under:

73 Flowers in an eggcup:

74 Cupcakes:

75 Savoury Pizza:

76 Vegetable monster:

77 Garden on a Plate:

78 A Painted Pebble:

79 Colouring competition:

William Hewitt

William Hewitt

William Hewitt

Freddie Woolstone

Peter Dobson

William Hewitt

Freddie Woolstone

Ages 9-12:

80 Flowers in an eggcup:

81 Cupcakes:

82 Savoury Pizza:

83 Vegetable monster:

84 Garden on a Plate:

85 A Painted Pebble:

86 Twelve Line Poem:

Jennifer Hewitt

Jennifer Hewitt

Jolee Groce

Jennifer Hewitt

Jennifer Hewitt

Jennifer Hewitt

Florence Grose

LEE VILLAGE FLOWER SHOW REPORT, CONTD.

A BIG well done to everyone who entered and to all our victorious winners as well.

Well done to Ann Wallace for her great floral art work. Congratulations and jubilation to our Lee Champion Gina-Luisa for finally, after 2 years, winning the trophy back from Ilfracombe in the Domestic section. A big clap to said Ilfracombe competitor Bridget Gear for winning the Produce section, and for actually being able to grow such great fruit and veg in time for the show. A big well done to Martha for again, foiling her sister, and winning the Handicraft, your embroidery skills are unmatched. And finally to me, after years and years I finally get my hands on a trophy (or three). It was a momentous moment for me – YAY!

A BIG THANK YOU

To the Flower Show Committee, for all your hard work throughout the year to prepare for this amazing event; in particular Carolyn Weekes (our beloved secretary) and Bryan Russell (our favourite treasurer).

A BIG thank you to the rest of the committee for all your awesome work and commitment: Alan and Margaret Bannister, Eleanor and Martha Scarrott, and - of course - me! And an extra thank you to Eric, Geoff and David Tubbs, who have given up their time this year to help us out along the way.

AGM

Our AGM is coming up on 24 October at the Hall 7.30pm. All welcome, and we are looking for eager new committee members! So, anyone who fancies joining a fun committee that meets only 6/7 times a year, where we eat cake and gossip (well, I gossip, though other members find my lengthy discussions on nail varnish uncomfortable), please pop along and put yourself forward. Ideas and suggestions also welcome and encouraged, as this is your Flower Show as much as it is ours!

Lucy Scarrott, Chairlady

LOWER CAMPSCOTT FARM HOLIDAY COTTAGES

Seven 4 star graded holiday cottages
Stunning valley location overlooking the sea
Help feed the animals
Walk to Lee Bay & the Grampus pub
Dogs always welcome
Farm trail, indoor & outdoor play areas

DEXTER BEEF FOR SALE

Enjoy our delicious, succulent Dexter beef
grass fed and reared on the farm.
Well-matured beef that tastes as it should,
choose from steaks, joints, burgers,
mince & braising/stewing cuts.

Lee, nr Ilfracombe EX34 8LS
01271 863479
WWW.LOWERCAMPSCOTT.CO.UK

The Old Schoolroom Craft Gallery



Contemporary and Traditional

local art and crafts

Shop online www.wildcoast.co.uk

Follow on face book to keep up to date with
upcoming craft workshops and events

FB: The old schoolroom craft gallery Lee bay

Twitter @wildcoastart Tel: 01271 864067

EX34 8LW

BEAFORD ARTS IN LEE

We are looking forward to two events from Beaford Arts this autumn. The first:

Puppet State | The Man Who Planted Trees
Wednesday 30 Oct | Lee Memorial Hall



This is heartwarming family puppet theatre telling the inspiring story of a shepherd who transforms a barren wasteland into a forest. This multi-sensory adaptation of Jean Giono's environmental classic tells the story of a shepherd who plants a forest, acorn by acorn. As much a touching tale as it is a hilarious puppet show, *The Man Who Planted Trees* shows us the difference one man (and his dog!) can make to the world.

"Laughs, heartbreak, war, regeneration, scented breezes, sparkling wit and the best dog puppet ever. Perfect for children and grown-ups. Terrific." — The Guardian

This great review will, I hope, encourage you to come along and support Beaford to continue their great work of bringing the best of rural touring theatre to our Devon villages!

Age Suitability: 7 years and up
 8pm (doors 7.30pm).

Tickets £7.50. £5 under 16s. £22.50 family (2 adults, 2 under 16s).

Call 01271 865591 for tickets. BYOB. Pot luck supper available at The Grampus before the show, call 01271 865591.

Tied in with this uplifting tale of tree planting is this talk on Monday, November 11, at the Grampus on the less happy impact on the Devon landscape of Ash dieback:

A talk with Rob Wolton | Devon Hedges and Trees
Monday 11 Nov | The Grampus, Lee



Devon has more hedges and trees than any other place in the UK. They are of international importance, as an historical, cultural, wildlife and landscape resource.

Ash Dieback has now taken hold across much of the UK, including Devon and is likely to have a major impact on Devon's countryside, much of which is patterned by a rich network of hedges, hedgerow trees, small copses and woodland. If the Ash trees go, and evidence suggests we will lose over 90% of them, then the character of our landscapes is likely to change dramatically, with the loss of trees, hedgerows and the wildlife they support.

The spread of the disease through a tree can be rapid, and replacement trees take a long time to grow. Rob helped formulate Devon's Ash Dieback Action Plan, and will talk about what we can do to ensure Devon's treescapes and the wildlife they support are restored and even improved for future generations.

8pm (doors 7.30pm). Donations. Call 01271 865591 for more information.

CHARITY GIGS IN LEE & LINCOMBE



'Bushpig' are performing on Saturday 16 November at 7.30pm in support of 'Friends of North Devon Families'. Tickets are £10, please call 07973872231. BYO refreshments.

Five gracefully maturing chaps in caps and whiskers playing an eclectic mix of soulful and bluesy grooves to listen to or get you up if the shuffle bites. Rich Malfait and Jim Crawford on guitars, Dayle Helsby on bass, James Blofeld on beats and local musician Paul Jaggars blowing trombone.

You might recognise some of the names or faces from the other bands we play in - Gypfunk (think French cafe and Gypsy vibes) and The Liquidators (think Ska!). And hopefully you'll already have heard Jim in a solo gig, playing acoustic slide and singing silk smooth blues.

BushPig gives us all a chance to meet up with our mates and play some different stuff occasionally. The songs evolve and there's a lot of musical 'follow the leader', a lot of improvisation, some nifty finger-work - and lots of grins. It's fun for us and it seems to be for people on the other side of the mics too. We hope you'll stop by.



'Syrinx', a duo comprising Lara Conley and Ania Job, perform on Saturday 25 January 2020 at the Yoga Barn, also in aid of 'Friends of North Devon Families'. Tickets are £10 from Alex or Paul Jaggars. BYO refreshments.



NORMAN'S FRUIT & VEG

40 High Street - Ilfracombe

We always have a wide choice of both fruit & vegetables
& we sell local produce whenever possible.

PRESENTATION FRUIT BASKETS
made to order from £5 upwards

FLORAL BOUQUETS
for weddings & celebrations

FLORAL ARRANGEMENTS
for dinner parties or any situation

WREATHS

Phone us to discuss your requirements or place an order
(01271) 863105



16 HIGH STREET ILFRACOMBE

Tel: 01271 863558

Proprietor: SUE ADAIR

Open 8.30 - 5pm Monday - Saturday

FREE Local Deliveries

Ilfracombe's Health Store

Assorted cheeses, freshly ground coffee
A wide selection of nuts, pulses, dried fruits,
teas, herbs & spices.
Homeopathic medicines and aromatherapy oils.
And a great deal more.

A DATE FOR YOUR DIARY!



As you know the government moved the May Bank Holiday so that the country could celebrate the 75th anniversary of V.E. day.

The village hall will be hosting the celebration on Saturday 9th May 2020.

We are hoping that the weather will be kind and we can have a 40s themed "bring and share" afternoon tea party in the meadow. (If it's awful weather, we shall use the hall.)

We have plenty of bunting that can decorate the venue and, with the "bring and share" theme, the only cost would be the food that you bring.

Planning is at an early stage, but we do need to get an idea of numbers so can you please email ems-2@live.co.uk and let us know if you would like to come. Thank you.

Eleanor and Lucy Scarrott

CHRISTMAS BALL

Hohohohoho – tis almost the season! So, we are aware that it is only October, so leave the eye-rolling and 'its too earlys' for another time. We have a Christmas Ball to discuss.

Firstly, introductions: Maile Zara lives at the Grange with her finance Matt, she's from New Zealand, and has been living in Lee for the past couple of years. She came up with the fantastic idea for the Hall to throw a Christmas Ball this year, which she is organising, as a way for all us locals to mingle and jingle (bell) at Christmas time.

However, before we start setting everything down in stone, we do need villagers to get in touch. Now, we can only throw a ball if people are actually interested in coming. It'll be held between 1-15th December (we have yet to fix a date). There will be music, party games, drinks, and food available, as well as a beautifully decorated hall. Tickets will cost around £5, and maybe a pound or two more to include food. It's basically just to cover the cost of throwing the ball.

So, if any of you are interested, please, please get in touch, by just writing either the shortest email to me ever, saying you would like to come and how many of you, or if you see my

dad (Paul) walking along the road, feel free to stop him and tell him. He does love his chats. It's just so we get a rough figure of how many people might be attending, and if there's actually any interest from you guys to come.

Thank you for reading, please get in touch.

Lucy Scarrott - LucyMarnie@outlook.com



LEE & LINK'EM NEWS

Our thrice-yearly newsletter is delivered free to residents, and available to buy at 75p from The Grampus Inn or The Old Schoolroom Craft Gallery & Gift Shop.

We offer postal annual subscription (3 issues) to non-residents, delivered to your door for £5 per

year. If you would like to subscribe, please contact the editors.

Thanks to sponsors, the Lee & Link'em News continues to be freely available online to read and/or download. Please visit www.leebay.co.uk and follow the links.

**WATERCOLOUR
WORKSHOP**

Lee Memorial Hall, EX34 8LW



2nd Wednesday each month
10am - 4pm
£12 per person
Please bring your own lunch

Please contact tutor
Brenda Keeble
(01271) 267583
bandalin@talktalk.net



**Mike Turtons
BUTCHERS**
146 HIGH STREET, ILFRACOMBE

**Deliveries to Lee & Lincombe
residents & visitors**

EXMOOR VENISON
DEVON LAMB
WEST COUNTRY BEEF

LOCAL DEVON PORK (Large Whites)
from Mr Uglow (Holsworthy)

FREE RANGE & FRESH FARM CHICKENS
(Creedy Carver) by Peter Coleman

We make our own sausages, pies & pasties
We also prepare buffets for that special party
(quotes available)

01271 863643
admin@miketurtonbutcher.com

LOCAL DELIVERIES RETAIL CATERING

MILLFIELD SELF-CATERING COTTAGE - OVERLOOKING LEE BAY - NORTH DEVON



SPACIOUS DETACHED BUNGALOW - SLEEPS 6 IN 4 BEDROOMS - PRIVATE GARDEN - OFF-ROAD PARKING

Large lounge with wood burning stove, conservatory, open plan kitchen and dining room with patio doors leading out to one of the best views in North Devon, making your stay a truly unforgettable experience.

for more information and to book go to: www.millfieldcottage.co.uk

LEE & LINK'EM NEWS TEAM

Editorial team Gina-Luisa Hilborne
Heather Booker
Ian & Cynthia Stuart

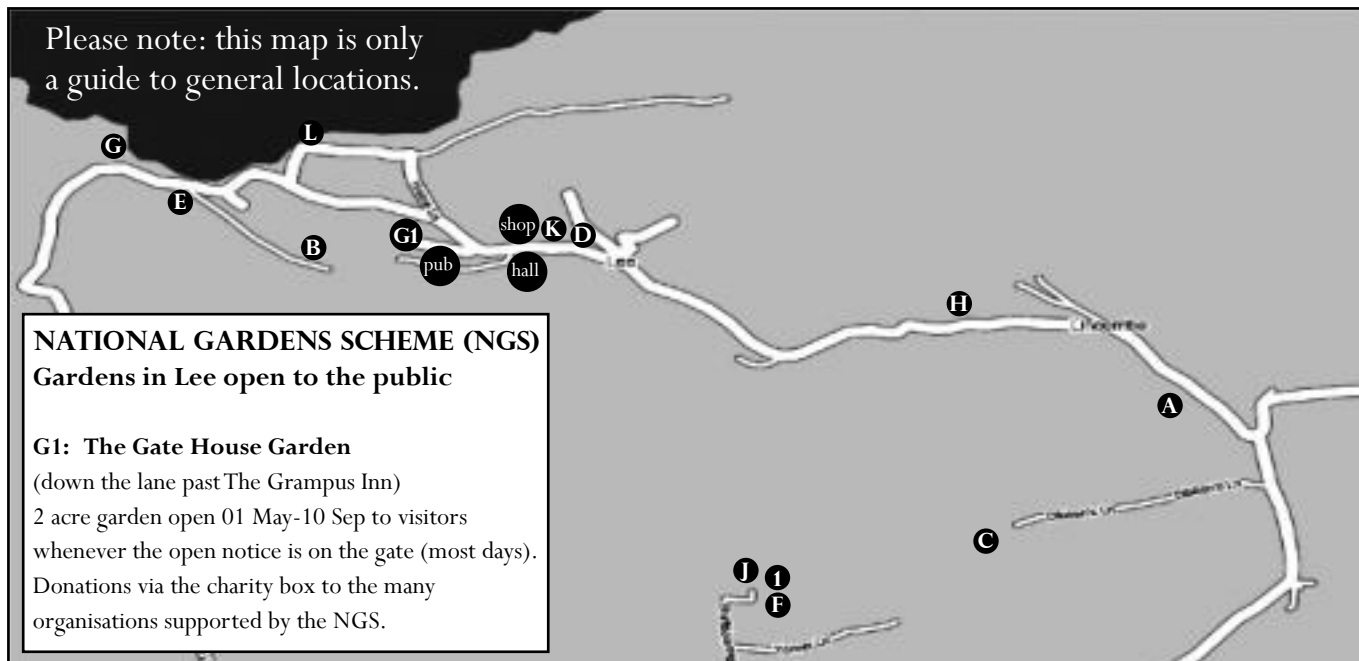
gina@loveleebay.co.uk
Tel: 862409
Tel: 863396

Production Ian & Cynthia Stuart

Advertising Heather Booker

Delivery teams *Many thanks to our delivery teams. If you would like to help with delivering the News, one of the editorial team would be delighted to hear from you.*

LEE & LINCOMBE ACCOMMODATION & SERVICES GUIDE



VILLAGE SERVICES

- pub. The Grampus Inn - Bill Harvey _____ (01271) 862906
- shop. The Old Schoolroom Craft Gallery & Gift Shop - www.wildcoast.co.uk - Louise Thompson _____ (01271) 864067
- hall. Lee Memorial Hall - for hire: leehallreservations@gmail.com - Martin Johncock _____ (01271) 269751

BED & BREAKFAST

1. Shaftsboro Farm - www.shaftsboro.co.uk - Margaret Kift _____ (01271) 865029

SELF CATERING (MAX. PER UNIT)

- A. Lincombe House (2,6,5) - www.lincombehouse.co.uk - Richenda S Carter _____ (01271) 864834
- B. Chapel Cottage on Beach Lane (9) - www.chapeltcottagelee.co.uk - Ginny Potts _____ (01271) 867212
- C. Lower Campscott Farm (3,4,4,4,5,6,6,8) - www.lowercampscott.co.uk - Kathy & Tony Mortimer _____ (01271) 863479
- D. Rose Cottage (10) - www.rosecottagelee.co.uk - Ginny Potts _____ (01271) 867212
- E. Beach House (9) - www.beachhouseinlee.com - Zoe Scutts _____ zoe@untitled.co.uk
- F. Shaftsboro Farm - www.shaftsboro.co.uk - Margaret Kift _____ (01271) 865029
- G. Damage Hue apartment (2+2) - www.damagehue.co.uk - Julien Busselle _____ (01271) 862876
- H. Lee Chapel (5) & School House (2), combined (7) - www.visitleechapel.co.uk - Ginny Potts _____ (01271) 867212
- J. Allender Farm (8,6,6,5,2+) - www.allenderfarm.co.uk - Jane & Jim Bridges _____ (01271) 866679
- K. The Old Vicarage (15) - www.theoldvicaragelee.com - Amanda Robertson _____ 07973 963 887
- L. Millfield (6) - www.millfieldcottage.co.uk - Louise Morris _____ bookings@millfieldcottage.co.uk

The opinions expressed by authors of the articles in the Lee & Link'em News are not specifically endorsed by the editorial team which cannot be held responsible for them.

SPRING 2020 ISSUE DEADLINE - 01 FEBRUARY 2020

Article formats: typed into an email or DOC format and emailed to gina@loveleebay.co.uk. No CDs, floppy disks or handwriting please.

ALL ADVERTISING MUST BE PAID FOR BEFORE THE COPY DEADLINE OR IT WILL NOT APPEAR.