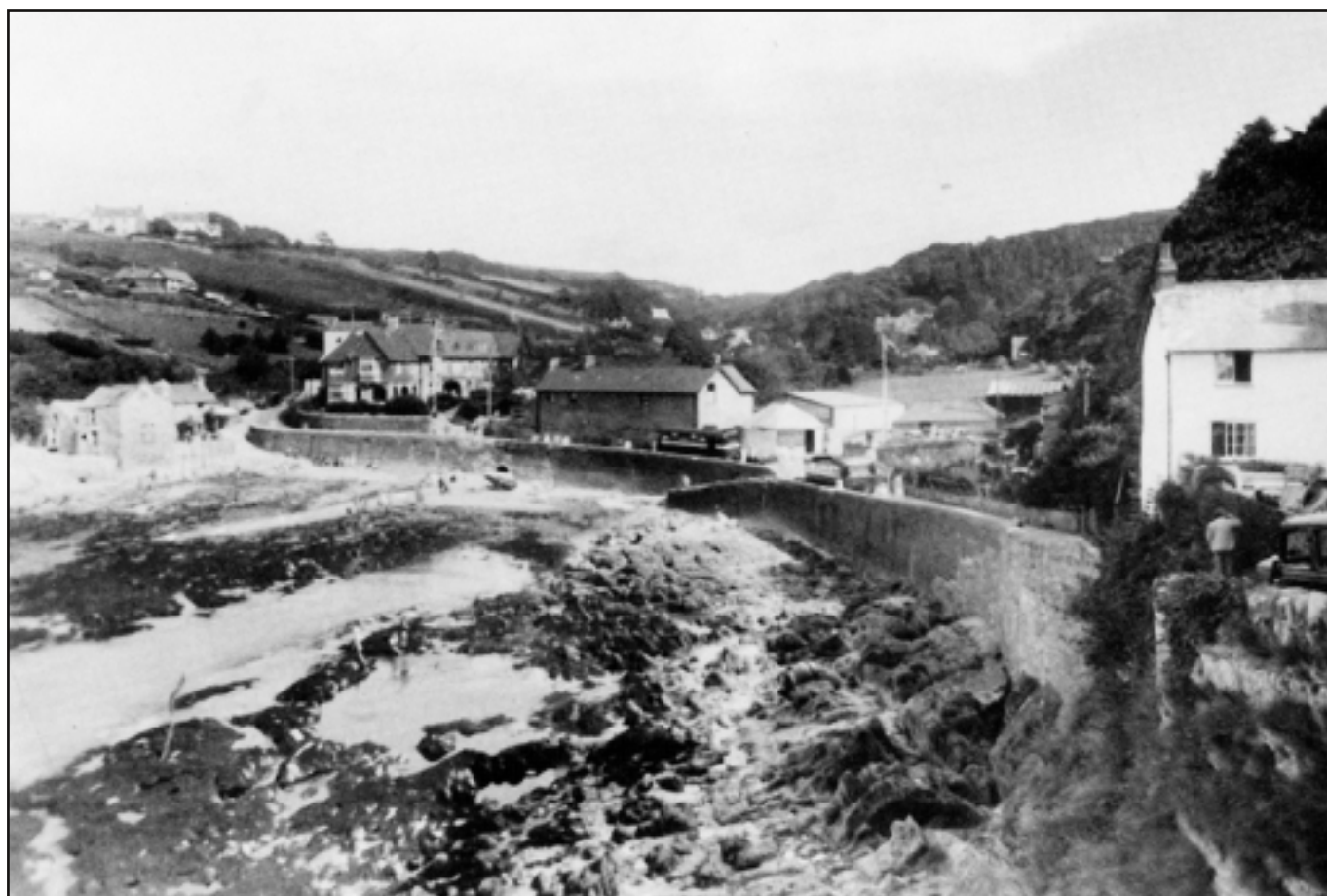


FOR THE RESIDENTS OF LEE & LINCOMBE VILLAGES
AND SURROUNDING AREAS AND OUR VISITORS

LEE & LINK'EM NEWS

AUTUMN 2017

75P



AS THE FUTURE OF THE LEE BAY HOTEL SITE REMAINS UNCERTAIN,
A FLASHBACK TO THE VIEW ACROSS LEE BAY IN 1937.

www.leebay.co.uk

LEE & LINCOMBE: 2017 DIARY DATES

Sunday 12 November 8.45am	Remembrance Sunday service – St Matthew's Church, followed by Act of Remembrance at War Memorial at about 9.30am
Saturday 25 November 8pm	Jim Crawford: Blues concert – Memorial Hall All profits go to benefit Syrian Refugees. Tickets via Paul Jagers (862975)
Thursday 7 December 6pm	'Light up a Life': a North Devon Hospice Service in memory of loved ones – St Matthew's Church followed by refreshments in Memorial Hall
Monday 18 December 6.30pm	Village Carol Service – St Matthew's Church, followed by seasonal refreshments in the Memorial Hall
Sunday 24 December 10pm	Christmas Communion Service – St Matthew's Church
1st & 3rd Mondays 9.30 - 11.30am	'Mini-Monsters' toddlers and babies – Memorial Hall (Contact Jen & Joe 07877 465 323 or Sarah & Dom 07584 020 190)
Fortnightly Wed & Thurs 10am-4pm	Patchwork and Quilters groups – Memorial Hall (Margaret Hill 864257)
2nd Wednesday 10am – 4pm	Art Class – Memorial Hall (Brenda Keeble 267583)
Tuesday 7pm – 8.30pm; Thurs 10 – 11am & 6.30 – 7.30pm	Yoga classes (Gentle Yoga Thursday morning) – Yoga Barn, Lincombe (Alex Giffoni 866743)
Friday evenings from 8.00pm	Open mic nights at the Grampus

The Beaford Arts show by Mammal Hands scheduled for 18 November has had to be postponed because of injury to a performer. It is hoped to re-schedule the event next year.

Other events may take place. Watch out for information on the Fuchsia List or on posters.
If you would like your event included in the next edition, *please contact a member of the editorial team.*

Please visit www.leebay.co.uk for the regularly updated calendar.

MILLFIELD

SELF-CATERING COTTAGE - OVERLOOKING LEE BAY - NORTH DEVON







SPACIOUS DETACHED BUNGALOW - SLEEPS 6 IN 4 BEDROOMS - PRIVATE GARDEN - OFF-ROAD PARKING

Large lounge with wood burning stove, conservatory, open plan kitchen and dining room with patio doors leading out to one of the best views in North Devon, making your stay a truly unforgettable experience.

for more information and to book go to: www.millfieldcottage.co.uk

GREETINGS AND FAREWELLS

In the last edition we were able to greet two babies recently born in the village. It is now a great pleasure to welcome another newly born baby to the village! Jen and Joe Steer (and big brother Tom) are delighted to announce the birth of a baby girl, Meredith Nora Steer, born at North Devon District

Hospital on 25 September. Joe says, 'The family are all now at home enjoying cuddles with the precious new arrival.'



There are a number of other people to greet and also some, sadly, to say farewell to.

Eric Couling and Carolyn Weekes have left Rose Cottage and now live at Overcliff, Mortehoe. However, we can't get rid of them yet! Unfortunately, the sale of Rose Cottage fell through at the last minute, so the house is still up for sale. Any offers? Furthermore, Eric has kindly agreed to stay on as Chairman of the Residents' Association whilst planning applications for the Lee Bay Hotel site are still pending. So we look forward to continuing to see plenty of Eric and Carolyn in the village.

Ally and Steve Poore and their family have now moved from Park Cottage. Ally says; 'We are sad to leave Park Cottage after eight fantastic years, but we haven't moved far: about three miles east as the crow flies to Higher Trayne Farm where we are taking on the exciting project of restoring a Grade II listed house and barn.'

We were made welcome to Lee from the moment we arrived and joined in with village life through Steve being a trustee of Lee Village Hall, Ally being on the Lee and Lincombe Residents' Committee and Arts & Crafts

FIRST AID REQUIRED?

Call Bill at The Grampus Inn (with onsite defibrillator: 862906).



Catering team and both of us being part of the Lee Spring Fair Group.

More informally though, being part of the village has meant enjoyment of the gentler pleasures of life, those that can only be gained through living in a small community in the countryside by the sea. We have been very privileged. With Steve relocating his company to Ilfracombe and Ally still coming to yoga and patchwork classes, we hope to remain part of lovely Lee.'

The new owners of Park Cottage are Tony and Dee Buckland and we welcome them warmly to the village. They are living in Milltown at present, but after a few alterations to the house are complete, they hope to move permanently to Lee before Christmas with younger son, Michael, who is a student at Petroc. Tony is a director of Investacast, a foundry at Mullacott Cross, and Dee teaches BSL (British Sign Language) to non-deaf people; she has recently worked in Bideford and Pilton. They also have an older son who lives in Bishop's Tawton and also works at Investacast and a daughter who is a teacher in Aldershot.

As always, we apologise for any omissions in greeting newcomers and saying farewell to leavers. Please let us know of any omissions and we shall rectify things next time.

GARAGE TO LET

Lee Village car park
Please contact Margaret Hill
hill4lee@gmail.com
01271 864257

NEWS FROM ST. MATTHEW'S CHURCH

I am writing this note just after another very successful Harvest Festival. Around 75 people, including a choir of 14, celebrated the occasion as a traditional village event with the service in church followed by a splendid Harvest supper in the Memorial Hall. The church was looking its best with fine displays of flowers and produce. The service opened with a procession of young people carrying a symbolic range of produce from land and sea, both local and from across the world. The singing was so good that a couple of birds flew in during the service to join in! The buffet table for the supper looked magnificent with salmon mousse and an array of flans alongside traditional favourites such as coronation chicken, home-made bread and a fine selection of sandwiches. The main course was followed by a variety of apple pies and crumbles with clotted cream and custard. Most of the food and all the wine quickly disappeared!

The theme of the service was 'Water of Life' and the collection is being sent to the Thungururu Conservation

Farming and Water Catchment Project in an area of Kenya suffering from serious water shortages. The project is based in the Diocese of Thika with which our Diocese of Exeter is linked. Just over £300 was collected. With Gift Aid and a donation from the church, £400 is being sent to the project. Many thanks to everyone who came to the Harvest Festival and to all who helped in any way.

Our monthly All-age services on the second Sunday of each month have now been going for a year. It is good to see how well they have been supported by young families and older people alike. As I have said before, the idea is to provide something to appeal to younger people but with a firm structure and much substance to be valued by all ages. There is a theme each month and it is relatively informal in style with straightforward language. The next all-age service coincides with Remembrance Sunday and, of course, the content and style will reflect this important occasion. At the end of the service, everyone gathers around the War Memorial where all the names on the



Mike Turtons BUTCHERS

146 HIGH STREET, ILFRACOMBE

**Deliveries to Lee & Lincombe
residents & visitors**

EXMOOR VENISON

DEVON LAMB

WEST COUNTRY BEEF

LOCAL DEVON PORK (Large Whites)
from Mr Uglow (Holsworthy)

FREE RANGE & FRESH FARM CHICKENS
(Creedy Carver) by Peter Coleman

We make our own sausages, pies & pasties
We also prepare buffets for that special party
(quotes available)

01271 863643

admin@miketurtonbutcher.com

LOCAL
DELIVERIES

RETAIL
CATERING

The Old Schoolroom Craft Gallery



Contemporary and Traditional

local art and crafts

Shop online www.wildcoast.co.uk

Follow on face book to keep up to date with
upcoming craft workshops and events

FB: The old schoolroom craft gallery Lee bay

Twitter @wildcoastart Tel: 01271 864067

EX34 8LW

NEWS FROM ST. MATTHEW'S CHURCH, CONTD.

memorial are read and two minutes' silence is observed. Everyone is most welcome to the service or to just the act of remembrance. The service starts at the usual time of 8.45 am, with the act of remembrance at about 9.30.

Thoughts will soon be turning to Christmas and there will be 4 special services in the church to which everyone is most welcome.

On Thursday 7 December at 6.00 pm, North Devon Hospice is holding one of its series of 'Light up a Life' services in St Matthew's Church. These services are an opportunity to remember the lives of those we miss at Christmas and to light a candle to remember the light they brought to our lives.

The Village Carol Service will take place on Monday 18 December at 6.30 pm. This is always a splendid community celebration of Christmas with the service followed by seasonal refreshments in the Memorial Hall,

kindly provided by the Hall Committee. More details will come out nearer the time, but put the date in your diary!

Christmas Eve is on a Sunday this year and at 10.00 pm on Christmas Eve, there will be the traditional Christmas Communion service in the church with the singing led by the choir. This is always a fine occasion in the candlelit church making it an excellent start to Christmas itself.

On the Sunday after Christmas, our group of 3 churches in Lee, Mortehoe and Woolacombe hold a joint service. This year it is New Year's Eve and it is Lee's turn to host the service. The time of the service has not yet been decided but it will be during the morning. Please look out for details nearer the date.

Do come along to the various events and services in the church. You will be warmly welcome.

Ian Stuart, Vice-Chairman St Matthew's PCC



NORMAN'S FRUIT & VEG

40 High Street - Ilfracombe

We always have a wide choice of both fruit & vegetables
& we sell local produce whenever possible.

PRESENTATION FRUIT BASKETS
made to order from £5 upwards

FLORAL BOUQUETS
for weddings & celebrations

FLORAL ARRANGEMENTS
for dinner parties or any situation

WREATHS

Phone us to discuss your requirements or place an order
(01271) 863105

WATERCOLOUR WORKSHOP

Now at Lee Memorial Hall
Lee EX34 8LW



2nd Wednesday each month

10am - 4pm

£10 per person

Please bring your own lunch

**Please contact tutor
Brenda Keeble**

Please note the NEW number: (01271) 267583
for further details

LEE & LINCOMBE RESIDENTS' ASSOCIATION REPORT

'WORKING WITH YOU TO KEEP OUR VILLAGES SPECIAL'

We want to bring you all the latest news and updates from the Residents' Association which affect us all – including the infamous Lee Bay Development – and set to rest any questions you may have about what exactly is going on.

THE ASSOCIATION – CELEBRATING 50 YEARS

A BIG Happy Birthday to the LLRA! This is its fiftieth year, which is young by our standards. Hopefully, it'll go on supporting this village for another 50.

But what exactly is the Residents Association, I hear you ask, well, our constitution says:

"The aims of the Association are to promote and safeguard the amenities of Lee and Lincombe and their surroundings, and to pursue matters of common interest to the villagers, having due regard to the area being subject to Conservation Policies."

To summarise: We love the villages and the bay and we want to look after them for you, your families, visitors and future generations. We are not blind to progress but new developments and changes must not spoil the beautiful environment and should enrich the quality of your lives.

We hold an annual general meeting every year before the 1st June. It's important in so many ways, not least because this is when we can hear from the villagers – you get to weigh in on important village issues, or bring up your own, as well as helping to shape the committee for the year ahead, and give you a chance to hear back on the work that has been done on your behalf.

The committee members are:

Eric Couling (Chair - 871545), Carolyn Weekes, Paul (Honorary Treasurer) and Marion Thom, Elizabeth Gilliat, Mavis Rogers, Trevor Greaves, Alan Bannister (co-opted), and Paul Scarrott (Secretary - 864723).

If there are any issues that you would like the committee to help with on your behalf please contact any committee member – we meet when there is a need and we will do our best to help.

THE LEE BAY HOTEL

Yes, we're getting fed up as well. But we're not going to give in. There may be light at the end of the tunnel. We know our objections to Acorn Blue's amended application to develop the hotel site with 23 dwellings hasn't got unanimous support, with some of you wanting the dereliction sorted as soon as possible, and others are ambivalent. The clear majority of us, and we now have over 140 objections on the planning portal (less than a handful supporting), want to fight for something more beautiful, less dense, with facilities for visitors and the community. It is a Conservation Area after all, protected by law and regulation. There are character appraisals commissioned by the council that value the unique history, aesthetic and character of Lee Bay.

'LEE IS ONE OF THE FEW REMAINING PICTURESQUE AND UNTOUCHED VILLAGES ON THE DEVON COASTLINE'

An Alternative...

We also appreciate that we can't be NIMBYs. We have worked with the Friends of Lee Bay (led by the indefatigable Heather Booker) to find other solutions. One in particular is with Friday Street Developments Ltd. who have a successful 30-year track record of dealing with sensitive heritage buildings and sites in Conservation Areas. Our plans with them are in their early stages and nothing can be done unless we prevent the Acorn Blue planning permission.

Our discussions with Friday Street and Friends of Lee Bay have shown that a development including a seafront

LEE & LINCOMBE RESIDENTS' ASSOCIATION REPORT, CONTD.

restaurant, boutique hotel, a mixture of affordable and open market homes, tourism and community facilities including woodland walks, craft workshops, and shared revenue from car parking to conserve and protect public spaces are **commercially viable**.

The committee will combat the application with a petition (500 signatures last time), a brochure 'A BETTER WAY for the future of Lee Bay', attendance at the planning committee with co-ordinated and pertinent legal and moral representations, and by liaison with planning consultants, councillors and other stakeholders. YOUR SUPPORT at the NDC full planning committee, probably in November, is needed and will be greatly appreciated.

VILLAGE ISSUES

These are matters that have been raised by members that we would like your help and support with:

1. Hedges, Overgrowth and Drainage

Overgrown hedges can impede walkers and cars, and lead to accidents, injury and damage. Non-maintained drainage can lead to water on the roads which become a slip menace in winter. We would recommend Andrew Adams who does an excellent and very tidy job and will be in the village around now. His telephone numbers are: home 882833, mobile 07779640141.

2. Car parking

We all need to go about our daily business, but if you can avoid parking on blind bends or narrow places... it's obviously dangerous and does cause inconvenience.

3. Himalayan Balsam

You may have observed two particular walkers who have a penchant for ripping this major weed up, however they and we need your action to prevent its

spread, and to eliminate it.

Himalayan Balsam is a member of the Balsaminaceae family; also known as Touch-me-not

Balsam and Policeman's Helmet because of the shape of the flowers. It has been added to Schedule 9 by The Wildlife and Countryside Act 1981 (Variation of Schedule 9) (England and Wales) Order 2010: THIS MEANS THAT IT IS ILLEGAL TO PLANT OR OTHERWISE CAUSE TO GROW HIMALAYAN BALSAM IN THE WILD.



Himalayan Balsam colonises areas rapidly and quickly outcompetes the surrounding vegetation and reduces diversity. Himalayan Balsam is an annual plant; growing from seed, flowering and setting seed within a year before dying. Himalayan Balsam grows very rapidly which necessitates readily available access to soil moisture which is why it has colonised river banks and other drainage channels which have an abundance of moisture and nutrients. It crowds out perennial plants that bind the river banks with their root systems. During flood events the river banks are then vulnerable to floodwater because of the lack of perennial plants.

The shallow roots allow the plant to be pulled up, right up to June when it flowers. Cutting, strimming or pulling on a regular basis for about three years will be effective and may even eradicate the plant from isolated sites. There are chemical methods of control that can be researched online.

Once again, if we can help, please ask.

Eric Couling, Chair LLRA

LEE MEMORIAL HALL UPDATE



After another busy summer in the hall, autumn has arrived. The meadow has been looking lovely all summer and was a pretty backdrop for the various wedding marquees and family parties that have taken place. We have had a mix of local residents and hirers from near and far.

There have been some interesting musical events. M'Larkey hosted their summer ceilidh in June which is always a fun evening. The hall was then used for a couple of quartet rehearsals in July as it appears to have good acoustics.

A local food company that has booked the hall for a pop up restaurant in the past and catered for weddings and parties here used the kitchen a couple of times to prepare food for a wedding tasting.

We hosted a public event at the beginning of August for North Devon Council to allow for a planning discussion on the Conservation Area.

Following the annual Lee Flower Show the hall hosted another wedding before our Arts and Crafts Fair during August. This was once again a great success with a wonderful and colourful display of many different crafts. As well as many of our regular crafts people we had some exciting new craft work including wood turning, pottery, handmade earrings, honey and fudge. There were also beautiful handmade glass decorations, wonderful felt pictures, exquisite needlework and patchwork, handmade cards, tea light holders created from old wooden barrels and sweet smelling soaps as well as delightful artwork all created by local artists. A lovely patchwork quilt created

by the Fuchsia Valley Quilters was the first prize in the raffle and there were other prizes kindly donated by local people. Delicious refreshments were on offer every day throughout the fair which involved a great many helpers who gave their time to bake scrumptious homemade cakes as well as helping in the kitchen. The fair was well attended with 1560 visitors raising £4073 for the hall funds – a fantastic result! Also a huge thank you to everyone who contributed towards the success of this annual event, the visitors, the crafters, the cooks, the kitchen helpers and those who were involved in the organisation – we are very grateful to you all for all of your hard work in making this another wonderful fair.

A recent booking was for the Yongquan Tai Chi instructors to host their AGM and who travelled from around the country to come to Lee!

More recently villagers may not have missed the Bio Blitz event that took place over 24 hours. It was organised by North Devon AONB through Devon County Council and incorporated many organisations. It was open to the public and involved lots of volunteers and schoolchildren gathering information in and around the village and bay and bringing it back to the base camp in the hall for recording and identification. It was a huge event, there were gazebos in the meadow and the hall was busy with people, tables covered with specimens and information boards.

Another new booking for the hall was the Studio Theatre in Ilfracombe who staged a reading of Dylan Thomas at 100 on 29th September.

At the beginning of October the hall was the setting for the annual Harvest supper following the service in the church, and a chance to meet up with our neighbours.

Finally, the hall is to be redecorated inside during January 2018 so will unfortunately be unavailable for hire.

Jane Johncock, Secretary
with thanks to Edna Thompson for her contribution on the Arts and Crafts Fair.

PHOTO DIARY: LEE ARTS & CRAFT FAIR



Photographs courtesy of Edna Thompson

LEE FLOWER SHOW - A DAY TO REMEMBER



My first taste of the prestigious and much-loved Flower Show was three years ago, when we first arrived in the beautiful village of Lee. Not enthusiastic at first, at the insistence of my mum, I decided it might be fun to enter a few things here and there. Twenty entries later and I was hooked (though if anyone knows us, twenty entries are not a lot for me). Surprisingly, I won a few things – 3 firsts, 1 silver, and 3 bronzes. Not being a competitive person *wink* I started planning for next year. So, a year flew by, and before I knew it I was entering roughly fifty things. Ambitious, I know. The most challenging thing is remembering what you've entered and actually getting it all to the hall in time, between madly baking an assortment of pies, cakes, and tarts. It was starting to turn into a family event as well, my sister – encouraged by my performance the year before – decided to give it a go, as did my dad. I think there were around 100 entries between us. I was, admittedly, slightly disheartened by the results – I had not managed to gain a single first. I also vowed never again to enter the flower arranging, as up against some masters of the craft, my poor attempts at randomly stuffing flowers into a pretty jar unsurprisingly fell short of the mark. However, my love for the Flower Show was not dampened and happily I was drafted onto the Committee. This did nothing for my competitiveness, of course, as I discovered that not only did one win a trophy, but said trophy was engraved with the winner's name.

So, the countdown to the 2017 Flower Show began. A few changes occurred, we extended the craft section to increase the variety of entries, while giving it more space on stage. This was hugely popular, and we had the largest amount of

craft entries for some years. We are indeed a crafty community. The coffee morning came and went (for those of you unaware, we hold a coffee morning in May where you can buy schedules and fuchsias and also help raise funds for the Flower Show). And before I knew it the Flower Show was upon us.

I had taken the day before off work in order to bake all my entries for the Domestic section, forgetting that now, as a committee member, I actually had to turn up at the Hall in the morning to help set everything up for the next day. It took around three hours, with a few healthy 'discussions' thrown in about the placement of tables and the like. Then, I got back to baking. Cursing myself for actively suggesting some of the bakes, I spent hurried hours head-to-toe in flour, while avoiding my dad's use of the kitchen for his 'men only' swiss roll. Another hour was spent delivering entries to the hall, and preparing for an early morning start. Having only one set of 8-inch baking tins (which both my mum and I prefer to use for our Victoria Sponges) mum used them the night before, leaving me to rise early at 6am to bake my own. Suffice to say, I survived the two days high on energy drinks - to the delight of the rest of the committee!

It was a fantastic day, all in all. I loved seeing the wide variety of entries across the board. I joined Carolyn and Bryan up on stage, writing down results as they came in – distracting Bryan with my delighted squeals! I may not have won a single trophy, but I did win the coveted first place for my Victoria Sponge, beating the other competitors, including my mum! It was great to see entries from outside the village as well, from people passionate about village shows, and greatly disappointed that the Ilfracombe Show came to an end. This brought forward how important it is to keep this amazing tradition and institution alive and running because, at the end of the day, it is fun (even if you don't win much or at all), it



LEE FLOWER SHOW - A DAY TO REMEMBER, CONTD.



brings the community together for a day, and local villagers can showcase their individual talents to the world. From someone who came from a suburban area where there was little if any community spirit, to this fantastic little community in Lee, I wholeheartedly encourage people to take part in such an amazing event. Even if you only enter one little thing (though I promise you, it's never just one), you'll be supporting the continuation of this fun and mildly competitive event. After all, it's the taking part that counts - something I repeatedly tell myself as my mum polishes her trophies in front of me!

A LITTLE BIT OF HISTORY

Babbling on some more, I LOVE history. And does the Lee Village Flower Show have history? My word it does! In our possession is a wonderful book from the past, the minute book which dictates the first ever meeting of the Lee Horticultural society a.k.a. the Flower Show committee. With some help from my mum translating the beautiful - but to me illegible - writing, I thought it would be fun to include a dose of history about the Flower Show.

Let me set the scene: it dates back to a – no doubt – cold, wet and wintery evening on the 4th December 1930. A villager by the name of Mr. Woodcock put forward a motion to the gathered group, to create 'a Flower Show [which will] be held in August, open to neighbouring villages (referring to Slade, Warcombe, and Morteheo) and comprising various classes which would give cottagers an equal chance with experienced gardeners.' What a lovely snippet from the past!

The rest of it is a little dull, but interesting to see how they started to prepare for the first Flower Show, relying heavily

LOWER CAMPSCOTT FARM HOLIDAY COTTAGES

Seven 4 star graded holiday cottages
Stunning valley location overlooking the sea
Help feed the animals
Walk to Lee Bay & the Grampus pub
Dogs always welcome
Farm trail, indoor & outdoor play areas

DEXTER BEEF FOR SALE

Enjoy our delicious, succulent Dexter beef
grass fed and reared on the farm.
Well-matured beef that tastes as it should,
choose from steaks, joints, burgers,
mince & braising/stewing cuts.

Lee, nr Ilfracombe EX34 8LS
01271 863479
WWW.LOWERCAMPSCOTT.CO.UK

on funds being donated, but also preparing the prizes. They gave monetary prizes it seems for the first few years, from what I've gathered, the beautiful trophies came a few years later when they could afford them. And I think we are very lucky to have them!

Suffice to say, the first Flower Show was a staggering success, with 60 competitors and roughly 400 exhibits! Almost double what we achieve today (some motivation for you). Though the Flower Show continues to be a success and integral part of the Lee Village year, your continued support and entries keeps it alive. Keep it going!



Photographs courtesy of Lucy Scarrott

LEE FLOWER SHOW - A BIG THANK YOU

To the Flower Show Committee, for all your hard work throughout the year to prepare for this amazing event - in particular Carolyn Weekes (our beloved secretary) and Bryan Russell (our favourite treasurer), who have taken on the extra work of the chairman this year.

A BIG thank you to the rest of the committee for all your awesome work and commitment: Alan and Margaret Bannister, Geoff Potts, David Tubb, Eleanor and Paul Scarrott – and of course - myself, Lucy Scarrott.

Look out for the AGM meeting, all welcome, and we are looking for eager new committee members! So, anyone who fancies joining a fun committee that meets only 6/7 times a year, where we eat cake and gossip (well, I gossip, though other members find my lengthy discussions on nail varnish uncomfortable), please pop along and put yourself forward.

Ideas and suggestions also welcome and encouraged, as this is your Flower Show as much as it is ours!

Lucy Scarrott

THE WINNERS!

Section A – Floral Art: Bowl

Section B – Domestic: Replica Cup

Section C – Produce: Produce Cup

Section D – Cut Flower: Tugwell Cup

Section E – Pot Plants: Ken Brown Cup

Section F – Handicrafts: Anne Duke Memorial cup

Best Fuchsia Exhibit in show: Memorial Hall cup

Best Perennial Exhibit in show: Cliffe Cup

Best Tasting Fruit and Vegetable: Booker Cup

Class 45 – Specimen rose: Rose Bowl

Class 64 – Chairman's choice Fuchsia: Glass Trophy

Highest Number of Points overall: Challenge Cup

Section G – Children: Children's cup

Ann Wallace

Runner up: Margaret Bannister

Bridget Gear

Runner up: Eleanor Scarrott

Alan Bannister

Eleanor Scarrott

Runner up: Ann Wallace

Eleanor Scarrott

Runner up: Lucy Scarrott

Eleanor Scarrott

Runner up: Martha Scarrott

Marion Thom

Alan Bannister

Alan Bannister

Eleanor Scarrott

Marion Thom

Eleanor Scarrott

Runner up: Lucy Scarrott

Amelia Dept

Runner up: Camille Dept

ADDITIONAL CHILDREN'S AWARDS

Ages 8 or under:

73 petal painting: William Hewitt

74 Cheese straws: William Hewitt

75 Chocolate Buns: Camille Dept

76 Vegetable monster: Camille Dept

77 Mustard and Cress:

78 A Handmade bookmark: Camille Dept

79 Colouring competition: Florence Grose

Ages 9-12:

80 petal painting: Amelie Dept

81 Cheese straws: Amelie Dept

82 Chocolate Buns: Amelie Dept

83 Vegetable monster: Amelie Dept

84 Mustard and Cress:

85 A Handmade bookmark: Amelie Dept

86 A Freehand Drawing: Amelie Dept

MINI MONSTERS PRESCHOOL/TODDLER AND BABY GROUP



Mini Monsters preschool/toddler and baby group has started up again for the Autumn term in Lee Memorial Hall. Now under the new leadership of Jen and Joe Steer and Dom and Sarah Waddington and running at a new time of 1st and 3rd Mondays of the month from 9.30-11.30am in term time. Many thanks to Becca and Catherine for their hard work to keep Mini Monsters running over the last few years.

Our first two sessions back after the summer have been well attended, with children from Lee, Ilfracombe, Combe Martin, West Down and Barnstaple. We have all enjoyed Playdoh sessions, gutter slides with cars, musical time with Joe and general mayhem.

If anyone is interested in coming along please check our Facebook page (Mini Monsters Lee) for up to date information about the next session. We look forward to seeing you!

Jen Steer



L&K Plant Hire

Mini Digger Hire - operated or self-drive



Call or email for a quote

Luke: 07814 129 916

Charlie: 07715 415 480

landkplanthire@gmail.com

Any job undertaken - big or small



**16 HIGH STREET
ILFRACOMBE**

Tel: 01271 863558

Proprietor: SUE ADAIR

Open 8.30 - 5pm Monday - Saturday

FREE Local Deliveries

***Ilfracombe's
Health Store***

*Assorted cheeses, freshly ground coffee
A wide selection of nuts, pulses, dried fruits,
teas, herbs & spices.
Homeopathic medicines and aromatherapy oils.
And a great deal more.*

FOND MEMORIES OF LEE

My hand rests on sun-warmed stone as I stand near the Memorial Hall in Pixie Meadow and the village ambiance wraps itself around me like welcoming arms. The wall is bedecked with the bright fuchsia flowers. The Church, and Memorial Hall and the Memorial Cross of stone laid down in time gone by, remain unchanged. Cottages that were once for working men and their families have been re-built into larger holiday homes for visitors in later years but the atmosphere remains so very much the same. Fuchsia bushes abound along the winding lane leading down from Lincombe keeping faith with the name Fuchsia Valley but over the last fifty years most of the beautiful large old trees have had to be taken down. The hills either side of the Borough Valley, green tree bedecked, fold down as a cloak to the valley floor and draw eyes out towards the sparkling sea and the horizon.

The homes cannot all be seen from the road as it is cut into the hillside and most houses are above sight of the traveller. Only their names can be seen on gates or driveways and imagination has to provide their presence. The Old Rectory and Ivy Bank are large old stone houses. Pretty Rose Cottage can be well seen from the footpath across Pixie Meadow. Its thatch still looks sturdy and firm and the rest of the house very well cared for and surely well treasured. It has most likely been with one family for a few generations. There are other houses on the lower side of the road. One now called The Grange from where one holiday we went home with fuchsia plants raised there, wedged in every nook and cranny within the car in between suitcases, bags and buckets and spades and even children. There are descendants of those fuchsias in my present garden.

The church with its ship's bell is an old friend as is the Memorial Hall. Within the latter I have visited flower shows, art exhibitions, spent a wonderfully happy evening at a barn

dance and another time listened to a singing duo and also enjoyed fetes in the adjoining Pixie Meadow. The Grampus arrived long after we had begun to visit the village and but in later years it too has become held in our warm affections.

Beyond the Church, Old Maids Cottage, with its thatch renewed, is living a new life as a holiday home. The house opposite, once called the Lych Gate, is where several holidays were spent with the children sleeping up in the little room with the pointed window. How lovely to go to sleep listening to the murmuring stream below.

Faces of people who we saw about the village on those holidays come into focus again and I am happy and glad to have known them and to still know others, even after all these years.

As I walk down towards Beach Lane I feel more than one presence with me. Which of my parents, brothers or my husband I cannot tell. Four are but spirits now and I know they all are surely to be beside me as I reach sight of the cliffs and the sea.

In time, should I never return, I have so many happy memories of past visits over the last fifty years or more to recall. Walking along the cliff paths, of clambering through Smugglers' Path, fishing the rock pools, swimming in the sea, munching lunch on the beach in sun - and rain! and watching young children revelling in it all - the sun, the sand and the sea. Then straggling slowly home across Pixie Meadow and up the lane between the fuchsias, having seen the sun go down to sleep in the sea to rest - just as we would - until the dawn broke on the morrow.

Lynn Money – September 2017

SELF CATERING - PROPERTIES OF TRUE CHARACTER AND CHARM - LEE VILLAGE



The advertisement features a central logo for 'Lee Chapel & Schoolhouse' with a small illustration of a chapel above the text. Below the logo, it says 'HOLIDAY ACCOMMODATION'. To the left of the logo is a large photo of the Lee Chapel, and to the right is a large photo of The Schoolhouse. Below these are two smaller photos: one of the Lee Chapel and one of The Schoolhouse. At the bottom, it says 'For more information, video tours, rates & booking details, please go to www.visitleechapel.co.uk'. Below the left photo is the text 'Lee Chapel - sleeps 5 (+cck)' and below the right photo is 'The Schoolhouse - sleeps 2 (+cck)'.

Lee Chapel - sleeps 5 (+cck)

The Schoolhouse - sleeps 2 (+cck)

AN EVENING OF THE BLUES - IN AID OF SYRIAN REFUGEES

Following on from last year's sell-out performance, we are delighted to announce the return to Lee Memorial Hall of

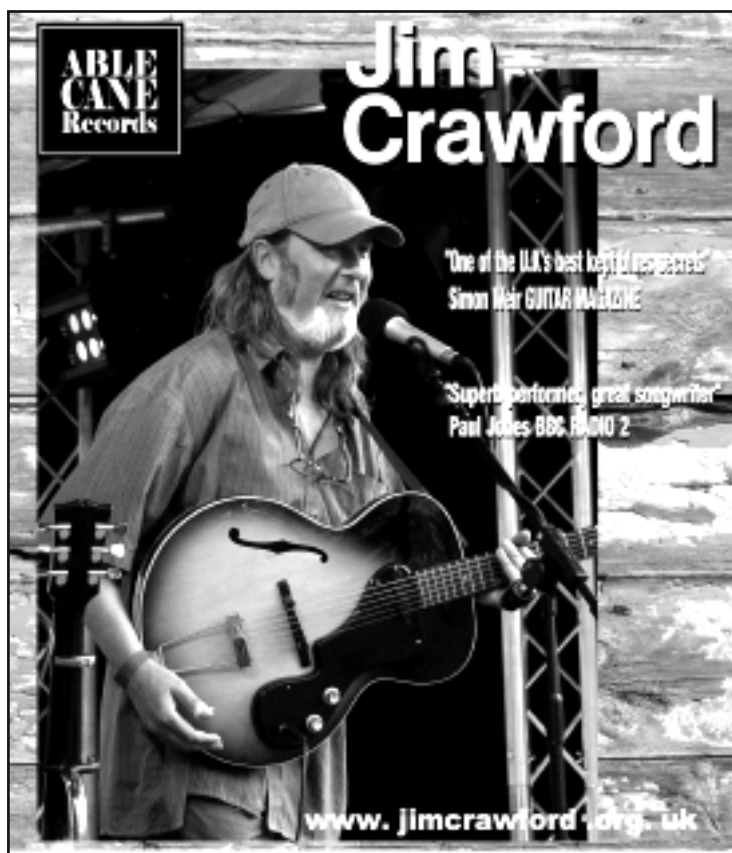
**Jim Crawford on
Saturday 25 November
from 8pm.**

Please bring your own refreshments to enjoy Jim's immense talent.

Tickets are available from Paul Jagers (862975, pauljagerstrom@btinternet.com).

All profits from the evening will be distributed through Drs Sarah and Dominic Waddington of Lee.

**PLEASE COME ALONG AND SUPPORT
THIS WONDERFUL CAUSE!**



LEE & LINK'EM NEWS

Our thrice-yearly newsletter is delivered free to residents, and available to buy at 75p from The Grampus Inn or The Old Schoolroom Craft Gallery & Gift Shop.

We offer postal annual subscription (3 issues) to non-residents, delivered to your door for £5 per

year. If you would like to subscribe, please contact the editors.

Thanks to sponsors, the Lee & Link'em News continues to be freely available online to read and/or download. Please visit www.leebay.co.uk and follow the links.

LEE & LINK'EM NEWS TEAM

Editorial team Gina-Luisa Hilborne
Heather Booker
Ian & Cynthia Stuart

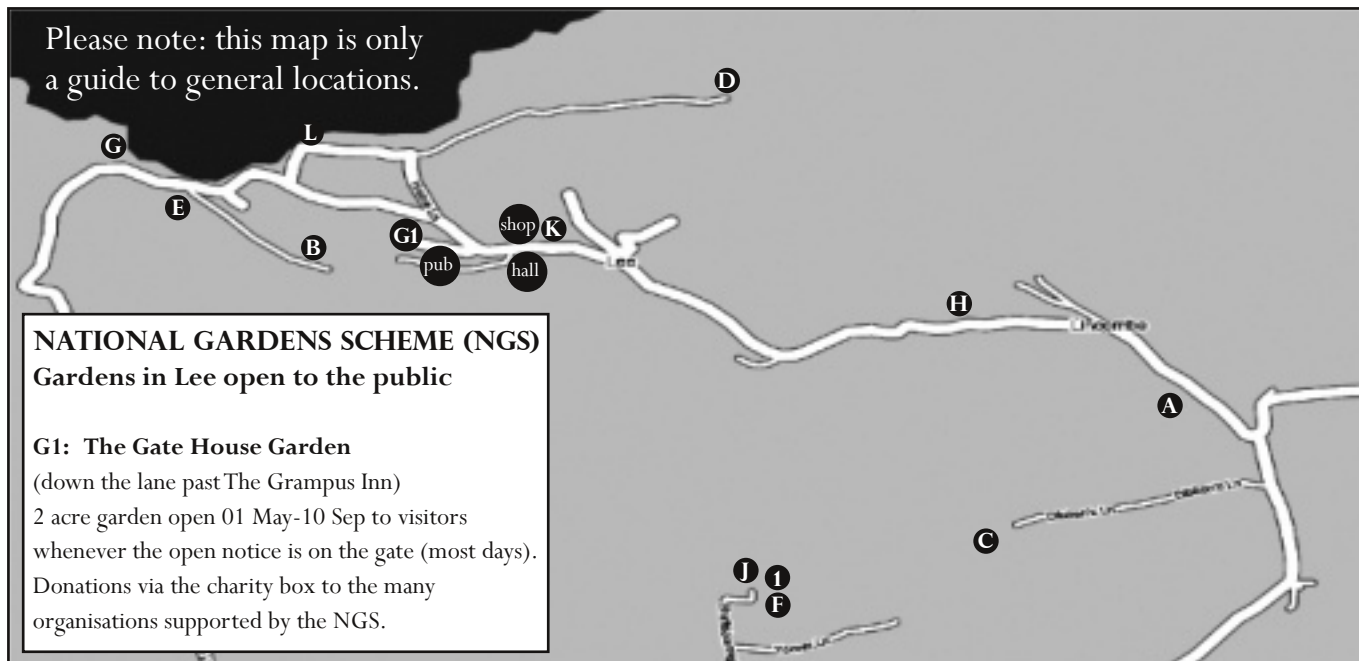
gina@loveleebay.co.uk
Tel: 862409
Tel: 863396

Production Ian & Cynthia Stuart

Advertising Heather Booker

Delivery teams *Many thanks to our delivery teams. If you would like to help with delivering the News, one of the editorial team would be delighted to hear from you.*

LEE & LINCOMBE ACCOMMODATION & SERVICES GUIDE



VILLAGE SERVICES

- pub. The Grampus Inn - www.thegrampus-inn.co.uk - Bill Harvey _____ (01271) 862906
- shop. The Old Schoolroom Craft Gallery & Gift Shop - www.noonoo-art.co.uk - Louise Thompson _____ (01271) 864067
- hall. Lee Memorial Hall - for hire: leehallreservations@gmail.com - Martin Johncock _____ (01271) 269751

BED & BREAKFAST

1. Shaftsboro Farm - www.shaftsboro.co.uk - Margaret & Frederick Kift _____ (01271) 865029

SELF CATERING (MAX. PER UNIT)

- A. Lincombe House (2,6,5) - www.lincombehouse.co.uk - Richenda S Carter _____ (01271) 864834
- B. Chapel Cottage on Beach Lane (9) - www.chapelcottagelee.co.uk - Ginny Potts _____ (01271) 867212
- C. Lower Campscott Farm (3,4,4,4,5,6,6,8) - www.lowercampscott.co.uk - Kathy & Tony Mortimer _____ (01271) 863479
- D. The Blue Mushroom (2/3) - mushroomblue@btinternet.com - Mavis & Michael Rogers _____ (01271) 862947
- E. Beach House - www.beachhouseinlee.com - Zoë Scutts _____ zoe@untitled.co.uk
- F. Shaftsboro Farm - www.shaftsboro.co.uk - Margaret & Frederick Kift _____ (01271) 865029
- G. Damage Hue apartment (2+2) - www.damagehue.co.uk - Julien Busselle _____ (01271) 862876
- H. Lee Chapel (5) & School House (2), combined (7) - www.visitleechapel.co.uk - Geoff Barker _____ 07870 239 973
- J. Allender Farm (8,6,6,5,2+) - www.allenderfarm.co.uk - Jane & Jim Bridges _____ (01271) 866679
- K. The Old Vicarage (15) - www.theoldvicaragelee.com - Amanda Robertson _____ 07973 963 887
- L. Millfield (6) - www.millfieldcottage.co.uk - Louise Morris _____ bookings@millfieldcottage.co.uk

The opinions expressed by authors of the articles in the Lee & Link'em News are not specifically endorsed by the editorial team which cannot be held responsible for them.

SPRING 2018 ISSUE DEADLINE - 01 FEBRUARY 2018

Article formats: typed into an email or DOC format and emailed to gina@loveleebay.co.uk. No CDs, floppy disks or handwriting please.

ALL ADVERTISING MUST BE PAID FOR BEFORE THE COPY DEADLINE OR IT WILL NOT APPEAR.