

FOR THE RESIDENTS OF LEE & LINCOMBE VILLAGES
AND SURROUNDING AREAS AND OUR VISITORS

LEE & LINK'EM NEWS

AUTUMN 2015

75P



PHOTO COURTESY OF
LYNN MONEY

SMUGGLER'S COTTAGE ON LEE BAY SEAFRONT PICTURED
SEVERAL DECADES AGO AS ONE OF MANY TEAROOMS IN THE VILLAGE

www.leebay.co.uk

LEE & LINCOMBE: 2015 DIARY DATES

Sat 24 – Sat 31 October

1-7pm each day

Christmas Arts and Crafts Fair

– Memorial Hall: work by local artists and craft people for sale.

Thursday 30 November 7.45pm

Double Bill: Amy Mason 'Mass'; Hannah Sullivan 'Echo Beach'

– Memorial Hall. (Promoted by Beaford Arts – tickets: Grampus 862906.)

See article in this edition of the News or Beaford Arts website for full details.

Monday 21 December 6.30pm

Village Carol Service – St Matthew's Church, followed by social gathering in Memorial Hall with seasonal drinks and refreshments.

Thursday 24 December 10pm

Christmas Communion Service – St Matthew's Church

2nd & 4th Thursdays 10am – 1pm

'Mini-Monsters' – Memorial Hall

(Please check dates and contact Becca Wyles 879001.)

Fortnightly Wed & Thurs 10am-4pm

Patchwork and Quilters groups – Memorial Hall (Margaret Hill 864257)

2nd Wednesday 10am – 4pm

Art Class – Memorial Hall (Brenda Keeble 863367)

Tuesday 7 – 8.30pm;

Yoga classes (Gentle Yoga on Thursday morning)

Thurs 10 – 11am & 6.30 – 7.30pm

–Yoga Barn, Lincombe (Alex Giffoni 866743)

Friday evenings from 8pm

Open mic nights at the Grampus (Bill Harvey 862906)

If you want anything included in the next edition, please contact a member of the editorial team.

Please visit www.leebay.co.uk for the regularly updated calendar.

SELF CATERING - PROPERTIES OF TRUE CHARACTER AND CHARM - LEE VILLAGE



The advertisement features a central logo for 'Lee Chapel & Schoolhouse' with a small illustration of a chapel above the text. Below the logo, it says 'HOLIDAY ACCOMMODATION'. To the left of the logo is a large photo of the Lee Chapel, and to the right is a large photo of The Schoolhouse. Below these are two smaller photos: one of the interior of the chapel and one of the interior of the schoolhouse. At the bottom left, it says 'Lee Chapel - sleeps 5 (+cat)' and at the bottom right, it says 'The Schoolhouse - sleeps 2 (+cat)'. In the center, below the logo, it says 'For more information, video tours, rates & booking details, please go to www.visitleechapel.co.uk'.

Lee Chapel – sleeps 5 (+cat)

The Schoolhouse – sleeps 2 (+cat)

For more information, video tours, rates & booking details, please go to www.visitleechapel.co.uk

GREETINGS AND FAREWELLS

As far as we are aware, there have been very few changes in the village's population in the last few months.

As planned, Bazz and Michelle Lawrence-Panter and their family left Lincombe Manor during the summer following their 12 month rental, prior to moving to Ireland and after Joseph had finished his GCSEs.

We are very pleased to welcome David Biggerstaff and Bernadette Smithers to one of the apartments at The Grange. They say that, after 25 years teaching and living in North Hertfordshire, they are looking forward to establishing their new home at The Grange. They have really appreciated the warm welcome that they have received and are looking forward to becoming part of the community.



We don't know of any other changes, but, as always, we apologise for any omissions of arrivals or departures. Please let us know and we shall rectify things next time.

FIRST AID REQUIRED?

Call Bill at The Grampus Inn (with onsite defibrillator: 862906).

ADVERTISE HERE

Please contact one of the editors
(details on inside of back page)



**16 HIGH STREET
ILFRACOMBE**

Tel: 01271 863558

Proprietor: SUE ADAIR

Open 8.30 - 5pm Monday - Saturday

FREE Local Deliveries

***Ilfracombe's
Health Store***

*Assorted cheeses, freshly ground coffee
A wide selection of nuts, pulses, dried fruits,
teas, herbs & spices.
Homeopathic medicines and aromatherapy oils.
And a great deal more.*

Established 1993

tel
**07855
110524**



Shane Ley
WINDOW CLEANER

kim190775@aol.com

**a traditional window cleaner
using ladders and hot soapy water**

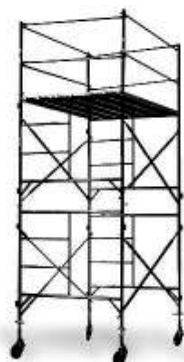
NEWS FROM ST. MATTHEW'S CHURCH

I am writing these notes on the day after the Harvest Festival. It was a very successful occasion in which we celebrated harvest in its many forms and took the opportunity to



show our support for our farming community. The church was full with 90 people, including 15 in the choir, crowding into the beautifully decorated building. As well as some excellent singing, the service included a procession of products from local farms. The collection was for the Royal Agricultural Benevolent Institution (RABI), a charity to support farming families in difficult times. The cash collected was £267.54. With much of it Gift Aided, we shall be sending £315.29 to the RABI. Nearly 80 people then sat down in the Memorial Hall to a splendid hot 2 course supper, sourced from local farms – a lamb casserole with a fine array of vegetables, roast potatoes and bread milled at Hele Corn Mill and baked in the village. It was followed by apple pie/crumble/tart with local apples and clotted cream. We enjoyed English wine from near Tiverton, beer from the Grampus, local elderflower cordial and local milk. The evening was also enhanced by a first-class musician who played and sang in the background during supper.

Many of you will have noticed the scaffolding around the flagpole. We have not been able to fly a flag for some time because the rope necessary to raise and lower a flag broke, probably through old age. After a thorough inspection, Alan and Luke Knowles reported that the pole was fundamentally sound and that, rather than



lowering the pole, the best way forward was to erect scaffolding and renovate the pole in-situ. They have done a splendid job sanding down the pole, filling cracks, repainting with many coats, replacing the pulley, and re-roping the pole. It should be good for many years to come and we can now fly flags again! But we need someone to take responsibility for raising and lowering flags on the relatively few special occasions when, traditionally, flags are flown. It's not a difficult or onerous task, but it needs someone at least a bit younger than those who have undertaken it in recent years! Full instruction will be given, so here's an opportunity to give a little bit of service to the village. A volunteer is urgently needed! Please consider offering your services and contact me (details below).

Plans to enhance the lighting and heating in the church are progressing more slowly than the Church Council would have liked. However, we now have a preferred scheme and are waiting for some of the details to be finalised before applying to the Diocese of Exeter for approval to carry out the work. Hopefully, there will be further news to report in due course.

Christmas services will follow a similar arrangement as recent years. On Monday 21 December, the village carol service will take place in the church at 6.30 pm, followed by a social gathering with seasonal drinks and refreshments in the Memorial Hall. Then, at 10.00 pm on Christmas Eve,



Thursday 24 December, there will be the traditional Christmas Communion service. As always, the candlelit church will be beautifully decorated for both these services, and everyone will be most welcome.

Ian Stuart
Churchwarden and Vice-Chairman St Matthew's PCC
01271 863396
ian@leedevon.co.uk

THE FUCHSIA LIST

As most village residents and home owners know, we started The Fuchsia List earlier this year as an aid to communications in the village. From email addresses known to us from the Lee and Lincombe Residents' Association, Neighbourhood Watch and other sources, we compiled a comprehensive list of residents and home owners to whom information about village events and meetings can now be sent quickly and easily. We have even managed to re-home a cat in the village as a result of an appeal from a resident! We restrict messages to matters directly relevant to our community and try to keep them as short as possible, sometimes, if necessary, with links to other information.

One of our hopes in setting up The Fuchsia List was to enable any message about Neighbourhood Watch to be communicated very quickly. In fact, as yet, there has been no need to do so – thanks to the peacefulness of the valley! But there has been one very positive development since our article in the last edition of the News about The Fuchsia List and Neighbourhood Watch. The village now has a new Neighbourhood Watch co-ordinator! Paul Scarrott of Ivybank answered our plea for a new co-ordinator and he has now taken over. This is good news indeed! An article by Paul appears elsewhere in the News.

We are pleased how well The Fuchsia List has been received, but we are aware that a number of properties are not part of the List. In some cases, this is because the homes do not have email facilities. In some other cases, it is because we still do not know an appropriate email address to



send communications to. If you are not receiving The Fuchsia List communications but would like to do so, please contact one of us. We can explain how the List works, including the privacy safeguards. We shall be very pleased to add you to the List.

Ian Stuart, Combelynchet, Lincombe,
01271 863396, ian@leedevon.co.uk

Gina-Luisa Hilborne, gina@loveleebay.co.uk

PIPCOTT FURNISHINGS WEST DOWN



MADE TO MEASURE

CURTAINS, VALANCES,
ROMAN BLINDS
CUSHIONS, LOOSE COVERS
PLUS ALTERATIONS
FREE QUOTES

CONTACT HEATHER REEVES
Tel: 01271 863678 or 862595
Mob: 07918 616093

LEE MEMORIAL HALL UPDATE



Autumn has definitely arrived but we have memories of another busy summer.

Back in June we had a wonderful Quilting Exhibition organised by Margaret Hill. The hall was adorned with amazing handmade quilts, displayed from the floor to almost the ceiling, all beautifully crafted and some with personal stories attached. It was lovely to meet many of the quilters who were on hand to give advice and then perhaps give us the incentive to attempt one ourselves! In addition there were other hand-crafted textiles, some of which were for sale to raise money for the North Devon Hospice.

Our annual Arts and Crafts Fair took place at the beginning of August. The hall was brimming with colourful makes of every description including cushions, knitted goods, cards, ceramics, pictures, sweet smelling soaps and decorative glass. The crafters had a very successful fair with increased profits. Thank you once again to all the exhibitors, and we need to thank many people for their time and effort preparing and organising the fair. Thank you Sandy Hanson for gathering the crafters together and ensuring we had a beautiful display for our visitors; Cynthia Stuart for taking charge of the refreshments, co-ordinating the rota of helpers, preparing much of the food in advance and spending a good deal of the two weeks actively running the kitchen; Edna Thompson for organising the floats, stocking up our supplies and spending time in the kitchen, before

going home each night to count the money before she could relax; and finally Becca Wyles, who produced all the wonderful scones, sometimes within a few hours when we were desperate.

We are grateful to everyone who helped, villagers and regular visitors alike who did a turn in the kitchen (some many times) and for all the beautiful, homemade cakes that created an inviting, mouthwatering display. Even though the weather was not always on our side we had a very successful event and also many compliments about our lovely hall.

On Thursday 26 November we have another Beaford Arts event. This time it will be a double bill consisting of Comedy Theatre with Mass performed by Amy Mason and Dance Theatre with Echo Beach by Hannah Sullivan.

Our village hall now has its own Facebook page ('Lee Memorial Hall') which we use for advertising forthcoming events. Here you can see pictures from the Arts and Crafts Fair. During the summer the hall has seen a number of parties including wedding receptions. If anyone has any photos of past events at the hall we could use on our Facebook page please get in touch.

During half term, we will be holding our first Christmas Fair. It will run from Saturday 24 until Saturday 31 October, and be open from 1pm until 7pm each day. We hope to have the hall packed with even more stalls and encourage visitors and residents from the local area looking for festive ideas to drop in. We hope to see you there.

Jane Johncock, Secretary

NEWS FROM THE GRAMPUS INN



We welcomed Tom, our new Chef, in September. Tom has lived in North Devon for many years & was Head Chef at no11, The Quay. Rowan, who has been with us during the summer, completes the team in our kitchen.

Our Specials Board and alterations to our General Menu reflect Tom's expertise. Come and enjoy an evening meal and his excellent cuisine will make it a special occasion.

Several wines have been added to our list including a delicious dessert wine from the Jurancon region in the western Pyrennes, "Ballet d'Octobre" from Domaine Couhape. Using the Coravin system which injects the inert gas, Argon, through the cork at the same time as filling a wine glass, the wine remains in its pristine unopened state. So you can taste a range of fine wines before deciding which bottle or case to buy and buy any of our wines by the glass.

Our carbon footprint has been further reduced by the installation of the log boiler, replacing the bottled gas. Besides providing hot water and central heating to The Grampus, it also supplies hot water for the brewery. We are now composting all our kitchen waste using our new composter. The resulting compost will be used to grow veggies to use in the kitchen.

Looking forward to seeing you.

Bill



The Old Schoolroom, Lee CRAFT GALLERY AND GIFT SHOP

Local crafts, paintings, jewellery, greetings cards, pottery, maps, books and postcards, jam, honey and ice creams!

Tel 01271 864067
www.noonoo-art.co.uk



Mike Turtons BUTCHERS

146 HIGH STREET, ILFRACOMBE

**Deliveries to Lee & Lincombe
residents & visitors**

EXMOOR VENISON

DEVON LAMB

WEST COUNTRY BEEF

LOCAL DEVON PORK (Large Whites)
from Brian Holland (Yarnscombe)

FREE RANGE & FRESH FARM CHICKENS
(Creedy Carver) by Peter Coleman

We make our own sausages, pies & pasties
We also prepare buffets for that special party
(quotes available)

01271 863643

admin@miketurtonbutcher.com

LOCAL
DELIVERIES

RETAIL
CATERING

RELAUNCH OF LEE & LINCOMBE NEIGHBOURHOOD WATCH



Lee and Lincombe Neighbourhood Watch has been active since 1998. For a number of years the overall co-ordinator has been Bob Gilliat MBE who has had a phenomenal record of crime prevention involvement in

Ilfracombe West. He has been ably supported by Ian Stuart and Mavis Rogers who have taken responsibility for the Lincombe/Whitestone and Home Lane/Bay/Coast areas respectively, whilst Bob kept an eye on the centre of Lee. The measure of their success is the absence of reported crime in both villages for a number of years.

Bob has decided to hand the baton over and I am delighted to accept it. I am a retired senior police officer who knows that the support and involvement of the community is essential in keeping people safe. As Sir Robert Peel put it "the Police are the People, and the People are the Police".

The aims of the Neighbourhood Watch will be simple:

- Keep Lee and Lincombe and its residents and visitors safe
- Provide an effective liaison between the Police and the villagers to provide two way communication

If a crime occurs – where appropriate – then other villagers should be informed in order that we can work together as the eyes and ears of the police, exchange information, prevent further crime, and help the police catch the offenders. It will be our intention to use the Fuchsia List, personal and phone contact to ensure you are kept informed.

We are now on the national register so that new residents or other interested agencies can find us on the internet by using the postcodes for the area.

I keep a monthly contact with the local Police Neighbourhood Team - PCSO Pete Hyde, PC Nella

Barker, and Sergeant Andy Peel. You can view local crime for yourself at POLICE.UK and by inserting your postcode. You will find there has been no crime in Lee; about 12 crimes a month in Mortehoe and Woolacombe usually theft and damage; and about 18 crimes a month in Ilfracombe usually assault and antisocial behaviour.

We are also reviewing Neighbourhood Watch signage, and would be very interested in your views. In some locations and circumstances a well-placed sign may act as a deterrent and provide reassurance. The advice from the Police is to place them as you enter Lincombe, by the church in Lee, adjacent to the bay car park, as you drop down from Warcombe, and Home Lane. I will of course speak to the Residents' Association on the matter.

We already have contact details of most households. However, if you wish to check what information we have, please contact me, Mavis or Ian and we can make any necessary adjustments to keep the register up to date. But don't worry we will contact you by the means described above if anything happens in the meantime. Dependent upon what happens there may be other joint endeavours to keep the villages and surrounding farms and areas safe, but at the moment, keeping Lee and Lincombe crime free is our priority.

Paul Scarrott, Ivy Bank,
01271 864723,
Pes-2@outlook.com

CONTACTS:

Ian Stuart 863396 ian@leedevon.co.uk

Mavis Rogers 862947 leemave42@btinternet.com

Peter Hyde, PCSO 30373,
Ilfracombe Police Station, 08456567762
Facebook: www.facebook.com/IlfracombePolice

A FEW WORDS FROM OUR RESIDENT COUNCILLOR

I would like to thank all those who helped elect me to Ilfracombe Town Council (ITC) earlier this year. This is my first foray into local government and it's proving interesting in various ways!

Ilfracombe Town Council is made up of 18 Councillors, seven of whom are elected for the West Ward, which includes Lee and Lincombe. The Town Council has a few direct powers, but also exerts influence with the District and County Councils on issues that affect Lee and Lincombe.

I promised to keep residents of Lee and Lincombe informed of ITC matters affecting our villages, so I am grateful for the opportunity to contribute this short article.

The 'big issue' for us all at the moment is, of course, the planning application to re-develop the Lee Bay Hotel site. I have been working with Lee & Lincombe Residents' Association as Acorn Blue's plans have unfolded. We have tried to ensure that information is circulated as soon as it has become available, and to identify and represent the full range of residents' views to Acorn Blue. The decision about the planning application is not made by the ITC but by the local planning authority of North Devon Council (the district council). The town council's Planning & Environment Committee has made the following recommendation to the planning authority:

"recommend approval subject to the planning authority investigating and addressing the concerns raised by residents, including those concerns set out in a statement made by the Committee of the Lee & Lincombe Residents' Association".

This statement, and other information, is available on the LLRA website.

At the time of writing, we are waiting to find out the date when the planning authority will consider the application, and, as soon as this is known, we will send a message via The Fuchsia List.

As one of the 'health champions' of the council, I have been very involved in discussions with Northern Devon



Healthcare Trust about the closure of beds at The Tyrrell Hospital and about proposed changes to the ways in which health and social care are provided for residents of Ilfracombe and its outlying villages. I am sure that everyone will have seen the many references to the Trust's consultation in the local press. The town council understands the financial pressures facing the Trust but has expressed a strong objection to the continuing closure of community beds in Ilfracombe and serious concern about further bed closures in other community hospitals before alternative care arrangements, including more care for patients at home, have become properly established.

Other matters that have been considered or taken forward by the town council in the last few months include: discussions with local people and shop owners about difficulties with car parking in Ilfracombe; the re-opening of the Lantern Centre in the High Street; the maintenance of grass verges outside of the town; and the opening of self-guided walks at the Cairn Nature Reserve.

Further information, including the minutes of all council meetings, is available on the council's website at: <http://www.ilfracombetowncouncil.gov.uk/>.

Please contact me if you have any questions or if you think I can help as your representative on Ilfracombe Town Council.

Ron Stamp, Councillor for West Ward, ITC
ron.stamp@thewellcompany.com

1958: FIRST MEMORIES OF LEE, NORTH DEVON

It was mid-June when I first walked with my parents and two younger brothers from Higher Slade, where we were staying in a cottage, along and down the leafy lanes into Lee Village. My brothers aged 11 and 8 had 'found'

Lee Village and the Bay the day we had arrived from London. Being allowed to 'explore' while an evening meal was prepared they disappeared to return more than two hours later bearing a handful of shells to say they had found the sea! Mum was so relieved to have them safely back with us she couldn't dampen their wild excitement with a severe telling off!

To reach the village we strung along the lanes shouting "CAR" as one approached so the boys kept well into the side and held tightly to the dog's lead. My Mum and I delighted in wayside flowers and the grey stones of the old walls bedecked with tiny plants like pennywort, toadflax and periwinkle and all the fuchsia bushes overhanging. Dad looked up amazed at the cottage homes clinging to the very steep hill sides. We came from North Kent and were used to hills and vales but none quite like this!

A house called 'Miramar' we passed on the left opposite which was a fascinating 'dripping well'. There were fuchsia plants for sale there and I believe holiday accommodation there too. Mum did carefully transport some fuchsia plants home to Kent which she had in her garden still at the time she died age 87.

Walking on between the fuchsia hedges we came to the little Church and the Memorial Hall where we sat on the steps there for a while. We took in the atmosphere of

the old stone around and about us and wondered about the histories of those buildings. We were entranced and there was so much more to come.



Moving on beyond the then Post Office and Shop down towards Brookdale House we came to the lane that led down to the beach with the Old Farm on the left. As we started down I saw on the left next to Brookdale House an iron gateway through which I saw a garden and in view a bird bath, its column moss and lichen covered, and it left me wondering more about

the garden beyond that gate. It was one of the things I looked for every year we came.

At the corner is the 'OLD' POST OFFICE

This is a white cottage with black beams in a very neat and pretty garden, with a notice saying not to leave 'Horseless Carriages' at the gate. Set atop the hedge was a brightly painted little windmill - a man, if I remember

rightly, frantically chopping wood which made us laugh! We were to learn later of the tragic event that hit the house in earlier times. There was no wooden arch over the gate as in the old photograph and alas the industrious woodman no longer stands atop the hedge.

The POST OFFICE and SHOP

Standing facing the big black door with the stream coming under the wall on the left, and beside which stood the red telephone box. Just to the side of the arch where the stream came from were two steps down to the water where thirsty dogs could take a long drink. There were two brick pillars at the entrance which had laburnum trees either side making an arch above linking



1958: FIRST MEMORIES OF LEE, NORTH DEVON, CONTD.

them and the walk up the path was full of fuchsias. On the right was a large green cabin-like building. A rack of postcards stood on the right by the door and a red pillar box was set in the wall. The shop was full of holiday folk buying postcards and stamps, sweets and ice creams. The shelves were full of all manner of items. Packets of tea, cornflakes, sugar, biscuits and tins of baked beans and fruit! At other times we were to buy bread rolls, butter, cheese and ham and Lyons' Individual Fruit Pies for our beach picnics. There were small souvenirs too and my china cabinet today holds a small jug and sugar bowl made at the 'New Devon Pottery' bought there.

THE OLD FARM

What excitement when our family decided to have a cream tea on our very first visit to Lee in 1958. We chose the tea rooms belonging to the OLD FARM, now The Grampus, right in the centre of the village. We had never used cafes and certainly not restaurants. The area behind the main building (now the Grampus garden) was set out with rough wooden tables and chairs that looked very rustic. I remember the china as being plain white. Approximately where the table tennis table is now there was a long open shed, the tiled roof propped up by vertical rough hewn logs. There were tables and chairs under its cover and the swallows nested up on the ledges around where walls and tiles met. We laughed as we saw people bobbing about as the swallows zoomed in and out busily feeding their young. As we sat at our table we were enchanted as sparrows

and robins hopped about us, onto the tables and chairs and even on to the china - magic to we three children.

THE GATE HOUSE - formerly the Fuchsia Glen Tea Gardens

Going down the beach lane, passing behind the Old Farm which sold Devon cream teas, we came upon the gate to The Fuchsia Glen Tea Gardens where I saw the stream babbling down under the driveway and out under the garden wall and run along the Meadowside field towards Chapel Cottage. The tea garden

looked another pretty place. The lawn was dotted about with tables and chairs and brightly coloured sun 'umbrellas'. I saw a lady bearing a tray of crockery with a tall teapot, plates of scones and pots of jam and cream. I could hear the sound of happy chatter and the rippling of the stream. The stream was crossed by a wobbly wooden plank. The boys had crossed the plank but as they were shod for the beach they happily splashed back and forth! I dawdled, still

taking in the scene within the garden but we were not to stop for tea there either as the boys were so eager to go down to the sea. I did not know back then that I was, in time, to come to know that garden very well.

BEACH LANE

Beginning beside the gate to Fuchsia Glen Tea

Gardens with the stream running across it and down beside Meadowside field, my brothers were in their element running ahead, at times dipping their feet into the water as it made its way bounded by cow parsley, nettles and docks. Looking back we saw Southcliffe which alas then was half burnt out and, with its



Photo: Heather Booker



1958: FIRST MEMORIES OF LEE, NORTH DEVON, CONTD.

blackened rafters, looked so very sorry for itself. We were delighted to see another stream beside The Gwythers where there was a large old tree and, opposite, Chapel Cottage. Onward, along the roadway past more lovely flower bedecked old stone walls on the left, were the grounds to the Lee Bay Hotel on the right. Ever curious as children are, peering through the hedges, we saw people lounging in chairs on the lawns and some swimming in the bright blue swimming pool. Such luxury we thought, but we were happy enough to have our cottage in Higher Slade. The boys way ahead, as usual, were shouting "The sea, the sea!" Sure enough, there it was, framed between the cliffs and the green slopes on either side. A sight well worth the long walk!

LEE BAY

Grey slate cliffs, blue water and rock pools galore with treasures to find. A boat rocking gently on the tide and, it seemed then, all the time in the world to enjoy! On the right the Old Mill stood as it had for years and we were amazed at its closeness to the sea. It too was a tea shop at the time, selling ice creams as you would expect. Here we did have a cream tea and I thrilled with pleasure at seeing the low dark beams and the blue and white china contrasting with the rich brown tables and chairs. This was the height of luxury and even my Dad, who was very reserved and rather dour, was smiling as Mum poured out cups of tea and ladled the jam and cream on to scones!

On the left hand side of the Bay part way up against the cliff stood an old black boatshed. There is Smugglers

Cottage, then full of interesting items of the sea such as glass net floats, large sea shells, ships lanterns, different ropes of all thicknesses and a thousand other things. I think it was 1/- (one shilling) to walk around in there,

which we children did more than once! To the left and behind Smugglers Cottage stood Shell Cottage which had the front all decorated with sea-shells. Mum was fascinated and she so wanted to 'study' it close up, but, as it was set back, she was too respectful to enter the garden. Mum was a very creative person, able to make anything out of anything, so her interest was

understandable - if a bit embarrassing for a teenage me!

The road ran along the very edge of the bay and the tide was obviously often up and all but over the wall. On the left, the very steep hill led past White Cottage with black cat hinges on one of the doors and further up was Cliffe a lovely house with a beautiful wisteria climbing all over its walls. Opposite was a beautiful arched

gateway with an iron gate into a garden. Another gateway to another garden and once again I so wanted to enter and see all within. The lane went on up and over past Warcombe towards Mortehoe and Woolacombe but we did not venture that way. Above Cliffe House, Damage Hue stood looking way out over the bay and the Bristol

Channel. Up beyond it once apparently there was a golf course but it had gone long before we arrived.

Approaching the Old Mill, the road bears right, behind the Lee Bay Hotel and back towards the village centre. Up on the left is the coastal road that leads across The Tors to Ilfracombe. There are homes up there that are passed but we only became acquainted with the Blue



1958: FIRST MEMORIES OF LEE, NORTH DEVON, CONTD.

Mushroom which was another tearoom just where the hard road met the gate leading out onto the green slopes. A couple of times we walked down into Lee and out and across the Tors into Ilfracombe and when time to head for 'home' we had the privilege of taking the bus, which was great as we smaller folk could see over the high hedges. Other years we did the reverse!

If we didn't venture upwards we went along, looking right, over the valley with sheep grazing in the fields passing Broadlands on our way, and at the spread of the woods up the valley. The boys thought it strange how the telegraph poles could be seen marching down the hillside into the valley. Of course the trees had been cut back somewhat so as not impede the wires. Up on the hillside we saw Lee Manor which became christened 'The Flying House' as it sat showing above the tree tops. Continuing, we arrived back at The Old Post Office and headed towards the Shop. On the left was The Old Maids' Cottage with its thatch and lattice windows and rough hewn wooden porchway covered in roses. At that time the cottage could be visited inside for a small charge. Probably for another 1/-! But we didn't go in. On a slope beside the Cottage, a horse could be seen grazing, or gazing out from his 'box' if it was a wet day. In later times we did see a lady riding him along the lanes which we were glad about as we thought his paddock and 'box' were a bit small! Not that we'd know as the only horse we ever saw was the milkman's or the baker's.

THE CHURCH, the WAR MEMORIAL and THE SCHOOLROOM

These stone buildings so close together seemed very

interesting though we did not go into either back then. We saw the bell high up and did learn it was an old ship's bell. There was only one church I knew where I lived that had the essence of this one. The stone war

memorial with its cross interested the boys and my Dad. I thought of the people over the years who had attended the services and of children at lessons in the little school. There was no playground as in the Kent schools! I wouldn't have wanted to walk over the Tors to senior school as I know Lee children did in days gone by. Both these places I was to come to

know very well in later years.

THE MEMORIAL HALL

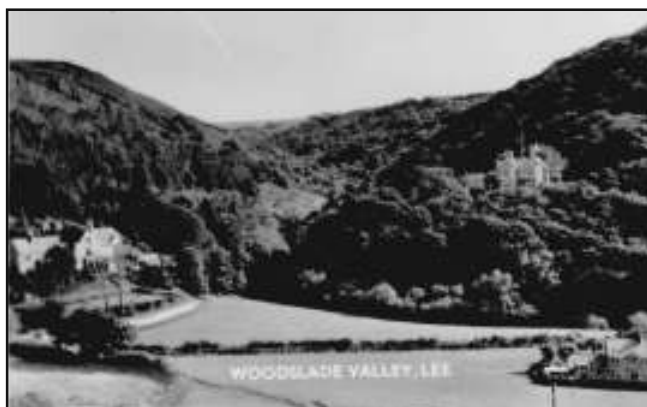
This hall of stone was so much nicer than any halls around where we lived and I have enjoyed some happy occasions there since that first holiday. We appreciated our rest on its steps on our way into the village.

Around the back of the hall in a car parking area was a green petrol pump with, if I remember rightly, a white shell shape on the top which we children thought was just right for a seaside village! There would be happy times to be had within the hall in time to come.

How fast the day sped by and, having seen so much, played on the beach, in the

sea, and had a cream tea in the Old Mill, we headed back for Higher Slade, walking slowly and wearily up the hill around the steep bend, up on to and along the top road and down to the cottage.

Lynn Money. (Unless stated, all photographs featured are from Lynn's own collection.)



BACK IN THE DAY: A TRIP DOWN MEMORY LANE

At recent meetings in the village I have become aware that some people are afraid that our little lanes in and out of Lee and Lincombe will not be able to cope with any extra traffic, should the Lee Bay Hotel site ever be developed.

I would like to take all newcomers to the village back in time 35 years. Oh, how old I feel! I would like to give you an insight into what a "thriving and industrious community" Lee was, to make you aware of how many businesses there were, mainly to do with the tourist trade, how much traffic they generated and - yes - our lanes did cope and no traffic jams.

We lived at "Catscull" at this time and my in-laws, Betty and Bernard Weekes, managed The Lee Bay Hotel. It was a family hotel, no coach parties back then, with an indoor and outdoor pool, tennis courts, putting green and croquet lawns, all set in the most beautiful grounds with sunbeds dotted around and staff always on hand. The hotel would have generated at least 50 guests' vehicles in and out of Lee and that is without accounting for staff and deliveries, etc. The lanes coped.

"The Smugglers Cottage" was a tea shop and "Beach House" was a cafe and gift shop. There was a kiosk in the car park selling ice creams, bucket and spades, etc. Going up the lane to "Chapel Cottage", another tea room and restaurant, owned by Luke and Cherry Hindmarch, who also owned "The Grampus Inn". "Chapel Cottage" was a delightful setting for light lunches and cream teas in the garden and in bad weather all of the downstairs rooms were for dining apart from the kitchen and studio. They were also open for meals in the evening.

"Lee Manor" was a hotel and restaurant business and was never gated. People were encouraged up the driveway to the hotel and my daughter Tracey and her friends were allowed to ride their ponies up the drive to the Borough Valley. They had a lot more freedom back then and it was much safer for them to be off of the road. The Manor also held dinner dances and medieval banquets and previous to this it had been a night club, no less! But that is another story for another day.

Moving on up "Warcombe Lane", Jean Jones ran a guest house at "Damage Hue" and "Warcombe Farm", owned by Theo and Gwen Gove, had a riding stables with over 30 horses alongside a dairy business which supplied us all with our doorstep pinta. What happy days.

Going up "Home Lane" you come to "Daymar Cottage" which was yet another guest house, run by Mrs Basten and then on up to the "Blue Mushroom" for your cream tea.

In the heart of the village you had "The Grampus Inn", "Fuchsia Guest House", the Post Office and Village Stores was where "Seal Cottage" is now and there was a tea shop in "Tea Shop Cottage". The craft shop in the schoolroom is the same. Next door "The Vicarage" was a thriving bed and breakfast and also "Sunnyside" run by Mary Newcombe and her parents. Next at "Miramar" (The Grange) you had a clematis nursery run by a John Scott. The Methodist Chapel on the double bend still had regular services and, going on up to Lincombe, there were several more guest houses. "Sunnyhill" at the top of Lincombe was a large guest house and restaurant.

All of these businesses had customers, staff and deliveries back and forth and I don't ever remember traffic chaos, sometimes a little hold up perhaps, but nothing major.

I must also mention Bill Cook's boat trips in the bay. If you were lucky you could get the last trip back to Ilfracombe where Bill moored "The Pirate of Lee" A wonderful village character, Lee born and bred. The village was really alive back then and there were so many more children living here, we even had a youth club in the Memorial Hall run by Edna Thompson and the school bus was positively heaving. Such happy times for the children growing up here, they had the beach plus the hotel pool and plenty of freedom to explore the woods.

I don't think we need to worry about our lanes, they were fine back in the day, and if they coped then they will cope in the future.

Carolyn Weekes

REPORT FROM LEE WOMEN'S INSTITUTE



It seems a very long time since I last wrote on behalf of Lee WI - it's not because nothing has happened to write about, on the contrary we have

had a busy and happy time, so there is plenty to talk about.

We now have 25 members, some from Ilfracombe, some new residents from Lee and the usual hardy bunch that have been members for a very long time. We are a lively and dynamic group of ladies with good and varied interests, covering all aspects of life.

This year alone we have covered topics such as travel in Botswana, and 'Thinking Skills'. We have witnessed a P.A.T. (Pets As Therapy) dog demonstrating his skills, and a demonstration and workshop in decorating cup cakes. How diverse is that? Five ladies from the Military Wives Choir from Chivenor sang for us. We heard stories first hand from them, of how lonely they were, and how difficult it is to make friends and then move on, in some cases every two years, and how disruptive it can be for their children. The choir gives the wives a sense of belonging and Chivenor was the first one to be set up by Gareth Malone, and now there are 80 in this country and several around the world. The bonds of friendships formed have been incalculable.

The meeting on 8th October was an open meeting for anyone to attend, with a representative from the MET Office in Exeter explaining how the weather is forecast. We are visiting Ilfracombe Museum on 12th November in the morning and we will be shown memorabilia from the First World War, and afterwards we are treating ourselves to lunch. Destination unknown as yet.

We planned two outings, the first to Marwood Hill Gardens in July. The gardens were stunning, as was the cream tea! And they made 17 of us very welcome. The other is the visit to Ilfracombe Museum.

One important thing always on our calendar is trying in a small way to keep our village clean and tidy, by having a big "Pick Up" of litter in the spring, before the visitors come and before growth in the hedges make it nigh on impossible. For the last two years, we have combined with the Lee & Lincombe Residents' Association and extended this on to the beach. There are those who say it's a waste of time, the next tide will bring it all back in. Imagine what it would be like if we didn't do it. More litter would just pile up and up. This year alone, 10 bags full to bursting were taken to the tip.

The final thing on our programme this year will be the candlelit supper, hopefully on 7th December if Julia Waghorn can fit us in. Last year 45 of us sat down to a superb supper in candlelight in a very festive looking hall, a truly lovely start to the beginning of the Christmas period.

You can't not have noticed the big publicity about the Women's Institute celebrating its 100th anniversary this year. There is certainly a new and fresh interest in the WI movement at the moment. Young women wanting to learn new skills in the crafts, knitting, sewing and baking, etc. The WI is one place to come, if none of our members can help you we know someone who will! We rely on our members to provide us with ideas and topics for our programme.

And, finally, I'm very proud to be able to say that our own institute celebrates its 90th anniversary next year. We will be planning a big party. There are only a few members left whose relatives were among the merry band of women who started it all.

Margaret Hill, President

P.S. There is no truth in the rumour that you have to be able to make cakes to become a member. If you are asked to provide one, go and buy it! Only don't say I said so. Ssshhh.

LEE & LINCOMBE RESIDENTS' ASSOCIATION

Dear Residents of Lee & Lincombe,

As Chairman of the Lee & Lincombe Residents' Association (LLRA) I would like to give a massive thank you to all the committee members that have been involved in the planning application for the Lee Bay Hotel (proposed Acorn Blue development). This has amounted to a great deal of work over the last 6-12 months. Also thank you to all those residents that have sent in their comments to the North Devon Council (NDC) planning department website, a great response from you all.

As of yet the NDC has not given any indication when this will come up before the planning committee. As soon as we know I shall ask Gina to put it on The Fuchsia List and the LLRA website. I would urge you all to attend this meeting at Barnstaple, the more residents to attend this meeting the more the planning committee will get a strong indication of the feelings we have about our village and Conservation Area and this development in an area of AONB and heritage coast.

The planning committee must take into consideration the National Planning Policy Framework (NPPF) which states that any development in a Conservation Area must have a economic, social and environmental

benefit to the local community. In rural areas, plans should promote the retention and development of local services and community facilities in villages such as shops, meeting places, sports venues, cultural buildings, public houses, and places of worship. Planning permission should be refused for major developments in these designated areas except in exceptional circumstances and where it can be demonstrated they are in the public interest.

A statement from the LLRA has been put on its website and on the NDC Planning Portal - please take the time to read.

Anyway, we thank you all for your input and hope we all get a satisfactory result for our village and community.

Finally, I would like to take the opportunity to thank Mr Barry Jewell, who has looked after our public toilets this year for us, and has gone the extra mile with his hanging baskets and planters. The LLRA really appreciates your work and I am sure the tourists do as well. Thank you so much Barry, from all the villages' residents.

Regards,
Eric Couling, LLRA Chair

MILLFIELD

SELF-CATERING COTTAGE - OVERLOOKING LEE BAY - NORTH DEVON







SPACIOUS DETACHED BUNGALOW - SLEEPS 6 IN 4 BEDROOMS - PRIVATE GARDEN - OFF-ROAD PARKING

Large lounge with wood burning stove, conservatory, open plan kitchen and dining room with patio doors leading out to one of the best views in North Devon, making your stay a truly unforgettable experience.

for more information and to book go to: www.millfieldcottage.co.uk

BEAFORD ARTS EVENTS IN LEE – AUTUMN 2015



By the time you get to read this, unless there has been some terrible disaster, the first autumn Beaford event will already be behind us. This was Five Rivers, with Najma Akhtar, held at the Yoga Barn in Lincombe. As I write this, a week before the show, we have sold out of tickets and are referring people to West Buckland in case they have any left for their show. Selling out of tickets is becoming a regular feature of Beaford events, so make sure you get your order for future events in early to be sure of a seat.

Our next show is on Thursday 26th November, in Lee Memorial Hall, and is a double bill. We hope it will appeal to many of our regulars, but also to some of those of you who have not tried a Beaford event before. The first half features Amy Mason in a single hander entitled 'Mass'. She developed the show in conjunction with Bristol Old Vic, and is now touring the country. Taking the Catholic Mass as her starting point, (lapsed) Amy presents her show in the form of an immersive lecture, taking care to inject plenty of added colour, joy and fun along the way. Before you know it you're singing along to Leonard Cohen's Hallelujah which six million Britons voted as their favourite song.

A charming and feel-good show that puts a spring in your step and a smile in your heart.

'Amy's version of Mass is a hoot. Big themes, big thoughts, delivered with divinely deceptive simplicity and no self-flagellation: I'm a convert.' Bristol 24/7


The second half brings a Beaford dance event to Lee for the first time. Don't worry, we are not asking you to join in! 'Echo Beach' is performed by Hannah Sullivan,

who is also based in Bristol, and revels in the casual social dancing that is unique to everyone. It uncovers the delicacies of family life, unveils memory through music and movement, and touches upon the fragility of what's seen and what's felt.

'A mix of joy, trauma, celebration, uniqueness and emotion that stirred something up in me and had me fully engaged'

Tickets are available from The Grampus (01271 862 906), priced at £7.50 for adults, £5 under 16s, and £22.50 for a family of 4. Doors open at 7.15pm, show starts at 7.45pm – and there is a pre-show pot-luck supper available at The Grampus for £5. Book in advance to guarantee you get it!

Alan Bannister



**NORMAN'S
FRUIT & VEG**

40 High Street - Ilfracombe

We always have a wide choice of both fruit & vegetables
& we sell local produce whenever possible.

PRESENTATION FRUIT BASKETS
made to order from £5 upwards

FLORAL BOUQUETS
for weddings & celebrations

FLORAL ARRANGEMENTS
for dinner parties or any situation

WREATHS

Phone us to discuss your requirements or place an order
(01271) 863105

LEE'S BLOOD MOON



As most of you must have heard, wonderful "la luna", commonly known as "the Moon", got abandoned by the sun's light on Monday 28th September, very early in the morning, from about 3 -

4:30am, and turned into a beautiful red ball, hanging high up in the sky.

Not only was it a total "lunar eclipse", it also happened to be a so called "super moon", meaning that the Moon appeared to be 70% bigger, and 30% brighter. What are the chances of these two rare events taking place at the same time?!

Me, Mishale (the German that keeps coming back), and a group of people from the Grampus, including our two current helpers Corteney (from Australia), Craig (from Canada), John (the 'motorhome man'), our ginger bartender Phil, Kristy (the American that keeps coming back), and of course Bill, and our three legged lady,

Lucy, all stayed up late and walked down to Sandy Cove, to see this spectacle happening.

As Earth slowly laid its shade upon the Moon's face, the night darkened, and more and more stars started to shine, so that we could even spot the Milky Way. And as Bill went out on his kayak, he even got to experience "bioluminescence", the glowing plankton in the water that is visible during this time of the year, and only glows when you move around. What a magical "blood moon" night it was!

And, yet again, Lee showed its full beauty and made us realise how lucky we are to be in such a special place, hardly touched by pollution, noises and any sorts of distractions of the 21st century. No wonder, Bill can't get rid of us. May we have lots more stunning nights in Lee...I'm sure we will!

Warm wishes to all of you,

Mishale



WATERCOLOUR WORKSHOP

Now at Lee Memorial Hall
Lee EX34 8LW




2nd Wednesday each month
10am - 4pm
£10 per person
Please bring your own lunch

Please contact tutor
Brenda Keeble
Please note the NEW number: (01271) 267583
for further details

Lower Campscott Farm

Quality grass fed Dexter Beef
& British Lop Pork
Reared on our own Farm!

Steaks, Joints, Sausages, Bacon, Burgers etc,
available from the freezer



Lee, near Ilfracombe, EX34 8LS, Tel: 01271 863479
www.lowercampscott.co.uk

MINI MONSTERS PARENT & TODDLER GROUP



Mini Monsters is a very friendly and informal group for parents, babies and toddlers. We meet on the 2nd and 4th Thursday of each month from 10am until 12pm in Lee Memorial Hall.

Price per child is £2, second child £1 and we request that a healthy snack is brought for children to share. Copious amounts of tea and coffee available for adults!

We are open to all and particularly welcome holiday-making families.

For any further information, please contact Becca
07870 908724 or

bwyles@southmead.devon.sch.uk
<http://www.minimonsters.org.uk/>

LEE & LINK'EM NEWS TEAM

Editorial team Gina-Luisa Hilborne
Heather Booker
Ian & Cynthia Stuart

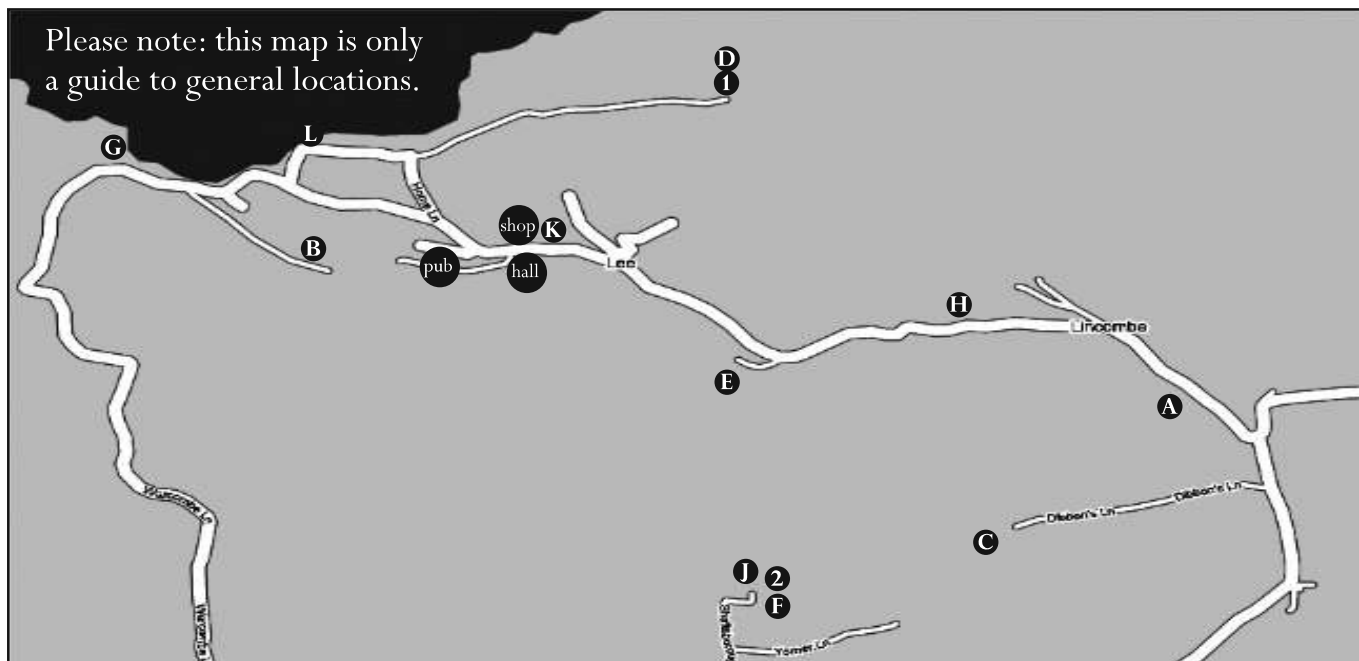
gina@loveleebay.co.uk
Tel: 862409
Tel: 863396

Production Ian & Cynthia Stuart

Advertising Heather Booker

Delivery teams *Many thanks to our delivery teams. If you would like to help with delivering the News, one of the editorial team would be delighted to hear from you.*

LEE & LINCOMBE ACCOMMODATION & SERVICES GUIDE



VILLAGE SERVICES

pub. Pub, Tea Rooms & Village Shop: The Grampus Inn - www.thegrampus-inn.co.uk - Bill Harvey _____ (01271) 862906

shop. The Old Schoolroom Craft Gallery & Gift Shop - www.noonoo-art.co.uk - Louise Thompson _____ (01271) 864067

hall. Lee Memorial Hall - for hire: angelahallreservations@talktalk.net - Angie Ellis _____ (01271) 865818

BED & BREAKFAST

1. The Blue Mushroom (2/3) - mushroomblue@btinternet.com - Mavis & Michael Rogers_____ (01271) 862947
2. Shaftsboro Farm - www.shaftsboro.co.uk - Margaret & Frederick Kift_____ (01271) 865029

SELF CATERING (MAX. PER UNIT)

A.	Lincombe House (2,6,5) - www.lincombehouse.co.uk - Richenda S Carter_____	(01271) 864834
B.	Chapel Cottage on Beach Lane (9) - www.chapelcottagelee.co.uk - Ginny Potts_____	(01271) 867212
C.	Lower Campscott Farm (8,6,6,4,4,4,2+) - www.lowercampscott.co.uk - Kathy & Tony Mortimer____	(01271) 863479
D.	The Blue Mushroom (2/3) - mushroomblue@btinternet.com - Mavis & Michael Rogers_____	(01271) 862947
E.	Crowness Cottage (4) - www.crownesscottage.co.uk - Irene Duffield_____	(01268) 742162
F.	Shaftsboro Farm - www.shaftsboro.co.uk - Margaret & Frederick Kift_____	(01271) 865029
G.	Damage Hue apartment (2+2) - www.damagehue.co.uk - Julien Busselle_____	(01271) 862876
H.	Lee Chapel (5) & School House (2), combined (7) - www.visitleechapel.co.uk - Geoff Barker_____	07870 239 973
J.	Allender Farm (8,6,6,5,2+) - www.allenderfarm.co.uk - Jane & Jim Bridges_____	(01271) 866679
K.	The Old Vicarage (15) - www.theoldvicaragelee.com - Amanda Robertson_____	07973 963 887
L.	Millfield (6) - www.millfieldcottage.co.uk - Louise Morris_____	bookings@millfieldcottage.co.uk

The opinions expressed by authors of the articles in the Lee & Link'em News are not specifically endorsed by the editorial team which cannot be held responsible for them.

SPRING 2016 ISSUE DEADLINE - 01 FEBRUARY 2016

Article formats: typed into an email or DOC format and emailed to gina@loveleebay.co.uk. No CDs, floppy disks or handwriting please.

ALL ADVERTISING MUST BE PAID FOR BEFORE THE COPY DEADLINE OR IT WILL NOT APPEAR.