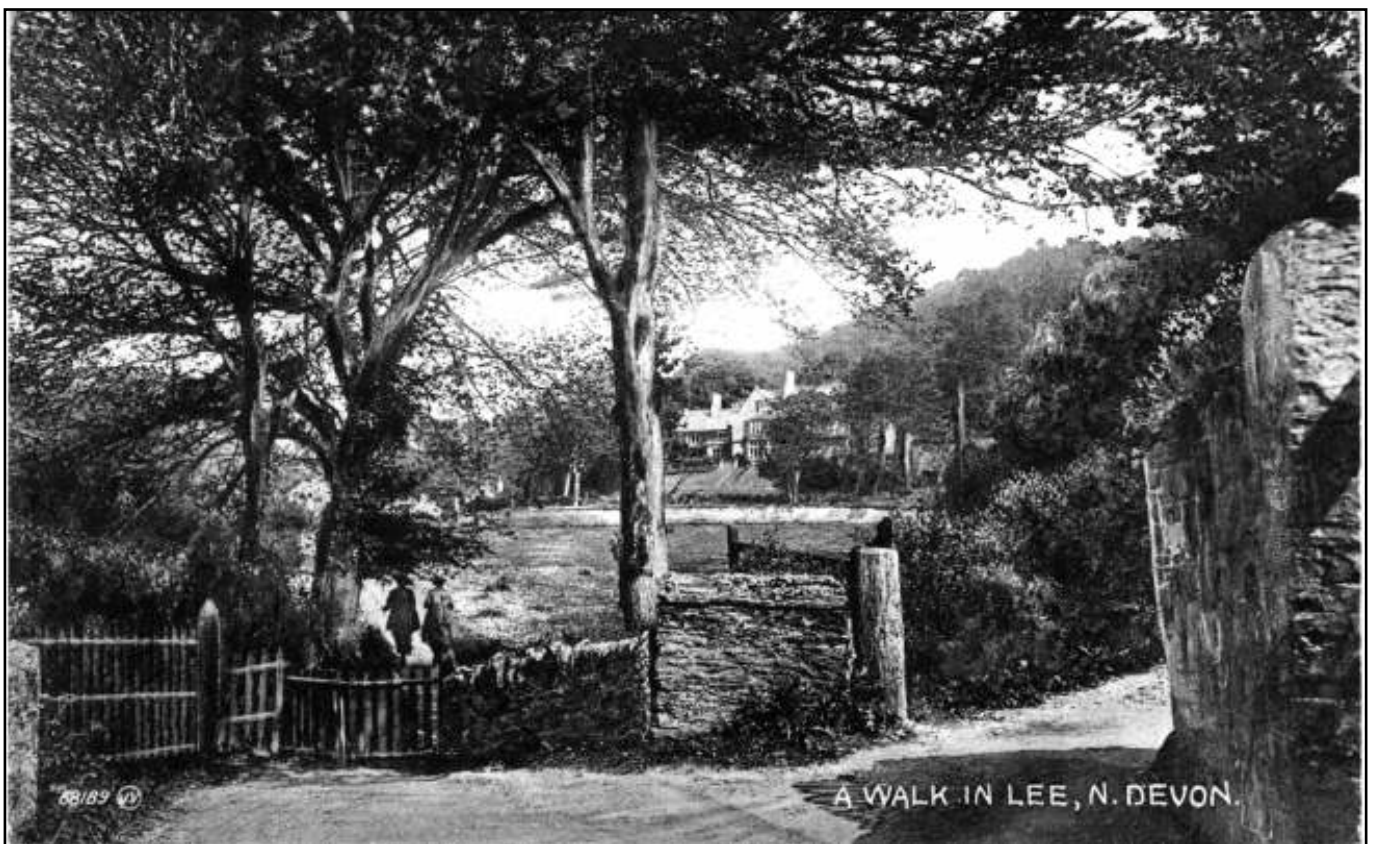


FOR THE RESIDENTS OF LEE & LINCOMBE VILLAGES
AND SURROUNDING AREAS AND OUR VISITORS

LEE & LINK'EM NEWS

SUMMER 2014

75P



A 1932 POSTCARD TAKEN FROM THE FOOTPATH BY CHAPEL COTTAGE & THE GWYTHERS, SHOWING SOUTHCLIFFE HALL (WITH ITS ORIGINAL LEFT WING INTACT PRIOR TO BEING DESTROYED BY FIRE)

www.leebay.co.uk

LEE & LINCOMBE: 2014 DIARY DATES

Thursday 31 July 2pm	Flower Show – Memorial Hall
Sat 2 Aug – Sun 17 August	Arts and Crafts Exhibition – Memorial Hall
Sunday 28 September 6.30pm	Harvest Festival Service – St Matthew's Church followed by Harvest Supper in Memorial Hall
2nd & 4th Thursdays 10am – 1pm	'Mini-Monsters' – Memorial Hall (Check dates and contact Susan Holland 07929 584 199)
Fortnightly Wed & Thurs 10am-4pm	Patchwork and Quilters groups – Memorial Hall (Margaret Hill 864257)
2nd Wednesday 10am – 4pm	Art Class – Memorial Hall (Brenda Keeble 863667)
Friday evenings from 8pm	Open mic nights at The Grampus Inn

If you want anything included in the next edition, please contact a member of the editorial team.

FIRST AID REQUIRED?

Call Sebastian (862453) or Bill at The Grampus Inn (862906).

The Grampus Inn has a defibrillator onsite.

NORTH DEVON CAR SCHEME NEEDS YOU!

North Devon Car Scheme is URGENTLY seeking drivers to help keep our passengers on the road. Become a volunteer car driver today!

If you feel that you can help your local community, please contact North Devon Car Scheme on 01271 855951 or email evie@ndcarscheme.org.uk

WARNING TO GARDENERS...

During the second week of June, thieves broke into Cliffe Gardens at night and stole plants in pots, some of them valuable. They were all in good old terracotta pots and included:

- A monkey puzzle tree, about 50cm high
- A small cycad
- A beaucarnia (looks like a ball about the size of a melon)

If you have any information, please contact Heather Booker or Gill Heavens.

GREETINGS AND FAREWELLS

The sad news that we reported in the last edition of the news of many deaths in the village has, most regrettably, continued. In the last edition, we briefly reported the deaths of Alf Keeble and Les Knott who both died just before the last edition was printed. As the last edition was being printed but too late to report, the death occurred of Lil Baker. Since then, Julian Clark died in March and Bill Davison in April. Just recently, Nicky Howard has also died at the age of 42 on the late May Bank Holiday.

Tributes to Alf Keeble, Lil Baker and Julian Clark appear elsewhere in this edition. Articles about Les Knott and Bill Davison will appear in the next issue.

Our sincere sympathies go to Adrienne and Richard Howard and Martyn, Nicky's brother, on her death on 26 May. Nicky was born June 18th 1971 and lived all her life at Meadowside. She found great pleasure in her garden there, and enjoyed walking to and on the beach.

In the Autumn 2013 edition we welcomed Dan Peters and Claire Snaith with their children Imogen, Harvey, Zachary and Ophelia to Lincombe Manor where they had 'a long term lease'. In fact, it has been short term as they moved out a few weeks ago! We understand that Colin and Jo Gibbs, who still own Lincombe Manor, are wanting to sell the property, so Dan and Claire and their family have moved to a house on the Arlington Estate. We wish them well in their new home.

In the last edition we bade farewell to David and Penny Perry. Unfortunately, your correspondent had a 'senior moment' in reporting where they had moved to. In fact, they have moved to near Twitchen on Exmoor. Apologies David and Penny!

Having been used as a holiday home for many years, it is a great pleasure to welcome Dom and Sarah Waddington to Lower Barn at Pludd where they are permanent residents. Dom grew up in Merseyside, and Sarah in Dorset. They have both been living in Newcastle for a number of years where they worked as hospital doctors. After leaving these jobs to spend a year working in Sierra Leone they have moved to North Devon to retrain as GPs. They both love the North Devon countryside and coastline, and are really looking forward to living here so that they can get involved in the local community and make the most of the wonderful area.

As always, we apologise for any omissions of arrivals or departures. Please let us know and we shall rectify things next time.

Mike Turtons
BUTCHERS
146 HIGH STREET, ILFRACOMBE
01271 863643

Deliveries to Lee & Lincombe
residents & visitors

EXMOOR VENISON

DEVON LAMB

LOCAL DEVON BEEF
from John Hockway (West Down)

LOCAL DEVON PORK (Large Whites)
from Brian Holland (Yarncombe)

FREE RANGE AND ORGANIC CHICKEN
also **FREE RANGE DUCKS**
(Creedy Carver) by Peter Coleman



We make our own Sausage, Pies and Pasties

We also prepare Buffets for that Special Party
(quotes available)



16 HIGH STREET
ILFRACOMBE

Tel: 01271 863558

Proprietor: SUE ADAIR

Open 8.30 - 5pm Monday - Saturday

FREE Local Deliveries

Ilfracombe's
Health Store

Assorted cheeses, freshly ground coffee
A wide selection of nuts, pulses, dried fruits,
teas, herbs & spices.
Homeopathic medicines and aromatherapy oils.
And a great deal more.

NEWS FROM ST. MATTHEW'S CHURCH

Mothering Sunday and Easter seem a long time ago now but, just to report briefly, services and events around those times went well. Around 40 people enjoyed a fine breakfast following the Mothering Sunday service, and the Easter Sunday service and Easter Monday Coffee Morning were very enjoyable occasions. It was good to see many villagers and visitors at both events, and many excellent hot cross buns and cakes were consumed at the Coffee Morning. Children enjoyed an Easter Egg hunt and, thanks to Kate Madden, many had their faces painted!

I mentioned in the Spring edition that we hoped to mark the 100th anniversary of the outbreak of the First World War in two ways. The first has already occurred. Thanks to funds donated in memory of Lionel Hill, the War Memorial has been splendidly cleaned and all the names and writing repainted. It is now in outstanding condition and worthy of the ultimate sacrifices made by the 16 men in the First World War and 3 in the Second World War from the village who gave their lives in these conflicts. The second way was the plan to hold a festival with a historical theme during the Bank Holiday weekend in August. This plan has changed and we are now hoping to organise a flower-themed event in the Church to complement the Arts and Crafts Exhibition in the Memorial Hall in the first part of August.

Readers may be interested to read that our Vicar, Giles King-Smith has been made a Prebendary of

Exeter Cathedral. For many centuries, Prebendaries were responsible, as the College of Canons, for the running of the Cathedral. Now, the role is largely honorary but one which gives the Diocese of Exeter an opportunity to recognise the very significant contribution some clergy have given to the Diocese. The formal duties are few, but Prebendaries act as a discussion and advisory group for the Bishop and each Prebendary preaches at least once a year in the Cathedral. Many of us went to the Cathedral when Giles was installed as Prebendary with great pomp and circumstance at Evensong in the Cathedral on 8 June. Congratulations, Giles, on this great honour. We look forward to seeing you in your scarlet robes on special occasions!

Harvest Festival will be on Sunday 28 September at 6.30pm, followed, as usual, by the fine Harvest Supper. As always, everyone is most welcome to this community service which celebrates village life in its widest sense and involves many people, including a choir to lead the singing of familiar hymns.

Finally, we are delighted to report that Bob Gilliat is making good progress following his serious heart operation in Derriford Hospital in Plymouth. We send all good wishes to Bob and Liz.

Ian Stuart, Churchwarden and Vice-Chairman, St Matthew's PCC

MILLFIELD SELF-CATERING COTTAGE - OVERLOOKING LEE BAY - NORTH DEVON







SPACIOUS DETACHED BUNGALOW - SLEEPS 6 IN 4 BEDROOMS - PRIVATE GARDEN - OFF-ROAD PARKING

Large lounge with wood burning stove, conservatory, open plan kitchen and dining room with patio doors leading out to one of the best views in North Devon, making your stay a truly unforgettable experience.

for more information and to book go to: www.millfieldcottage.co.uk

LEE & LINCOMBE RESIDENTS' ASSOCIATION - ANNUAL REPORT

I would like to thank all the members of the committee for their hard work over the last year and also Paul Thom for being treasurer.

During the course of the year the committee has dealt with many issues and concerns that have affected our village, below is a review of just a few of those.

POTHoles

These have been repaired several times in the last twelve months. I have recently reported the very bad ruts and potholes on the two bends at the top of Higher Slade which many residents have complained about.

SEA FRONT WALL DAMAGE

As you know we had a very high tide on 2 Feb this year which caused severe damage to the wall and causeway. Carolyn and I went to look and help clear away some of the stones and other debris blocking the road but the amount of stone blockwork was far too much for us to clear. The time that the damage took place was around 8am. I reported the damage to the Highways emergency number at around 11am. The lady manning the phoneline told me she would get on to it and if she could not get a workforce that day she would let me know when by 4pm when she

finished her shift. At around 3pm a lorry and a JCB arrived and cleared the road. The workmen were there for the best part of two months repairing the damage. An all-round good outcome.

PUBLIC TOILETS

The ITC is continuing to finance the toilets cleaning and repairs throughout the spring and summer months. We are very grateful for the support although they have asked if the village hall could take over the ownership to obtain a grant for a reduction in council tax as the village hall is a registered charity and as such would be eligible to claim a 80% reduction. We have not heard yet although there could be legal implications. Many thanks to Mavis for the cleaning - I bet she is the only cleaner with a masters degree in the country. And thanks also to Bill at the Grampus for letting people use the pub toilets through the winter.

HANGING BASKETS

Many thanks to the Lee Flower Show committee for financing these, they always look lovely throughout the summer months.

Eric Couling, Chair

CANINE CHAMPION!

We have another champion dog in the village! Josh, belonging to Betsy & Jules at Damage Hue, recently won the Best Dog in Show at the Chambercombe Manor Dog Show.

At the show, he had already won the following events: Best Rescue Dog and Best at Resisting the Temptation Sausage!

The dogs were judged by members of the North Devon Animal Ambulance, including its founder, Diana Lewis, who was awarded the British Empire Medal in the 2014 New Year Honours List.

The picture shows Josh with his rosettes and cup.



DEVON COUNTY COUNCIL: THE FUTURE OF DEVON LIBRARIES

Devon County Council wants your views on a series of proposed changes to the way the library service operates in Devon.

It has developed seven proposals for the future of Devon Libraries which have been influenced by a range of factors, including the:

- changing use of libraries with a decline in traditional book-lending services
- rapidly changing technological landscape and our customers' expectations that services should be available online and in a range of formats
- wider potential of libraries to support communities to develop skills and capacity
- need to make further budget savings

It has to make £1.5 million savings between 2014/15 and 2016/17. The seven proposals could deliver the required savings and provide a good spread of locations across Devon where high-quality and modern library services would be integrated with

other complementary services.

It is consulting on these proposals until 17 July 2014 and will then use the feedback to create a definitive set of proposals to take to Devon County Council's Cabinet.

Please take the time to review and consider the proposals. There are several ways that you can tell them your views:

- Fill in the questionnaire online
- Pick up a paper copy of the questionnaire from your local library
- Attend a drop-in session at your local library
(Details of the dates and times can be found by following the link below)

To view the proposals in detail, to read the information pack about your local library and to fill in a questionnaire please go to:

<http://www.toughchoices.co.uk/>

***** Lower Campscott Farm *****

Quality Dexter Beef & British Lop Pork

Reared right here on our own Farm!

Steaks, Joints, Sausages, Bacon, Burgers
etc, available from the freezer



Lee, near Ilfracombe, EX34 8LS
www.lowercampscott.co.uk
01271 863470



NORMAN'S FRUIT & VEG

40 High Street - Ilfracombe

We always have a wide choice of both fruit & vegetables
& we sell local produce whenever possible.

PRESENTATION FRUIT BASKETS
made to order from £5 upwards

FLORAL BOUQUETS
for weddings & celebrations

FLORAL ARRANGEMENTS
for dinner parties or any situation

WREATHS

Phone us to discuss your requirements or place an order
(01271) 863105

BEAFORD ARTS IN LEE

Once again, Lee has been treated to a number of excellent shows produced by Beaford Arts.

Last Autumn Kate Madden, Alex Giffoni and Alan Bannister took over from Bryony Shaw as the organising team to ensure we continue to benefit from Beaford's 45 years of experience providing access to high quality arts experiences across rural north Devon. Now, also joined by Bill Harvey, we plan on continuing to bring these events to the village for the benefit of everyone from Lee and the surrounding area.

Earlier in the year we staged some excellent music from Patrick Duff on his tour on the West Country. Thanks to Alex Giffoni, this was held in a new venue for Beaford, the Yoga Barn at Lincombe. Then in May we had Twisted Theatre, a group from Bristol performing some adult versions of nursery rhymes in the village hall. Both of these events played to a full house.

Finally, to end the spring season, we had The Boy Who Fell in Love with the Stars, a show that was part of the Lee Spring Fayre. This involved a sort of bedtime story, with stars and other images projected onto a screen. With all the normal venues in the village already being used for the fair, with the support of Giles King-Smith and the all those who run St. Matthew's, we were permitted to stage it in the church. Thanks to Nicky Crutchfield, who lent us his marquee, and North Devon Theatres (ably persuaded by Janet Mayo!) who provided us with blackout material, we were able to erect a blackout area that suited us perfectly. Two completely sold out sessions proved how popular this was.

We now have bids in for shows in October and November. We hope these will appeal to a wide range of tastes, so watch this space for news once we know the events we will be staging.

NEWS FROM THE GRAMPUS INN

Thanks to the generosity of Louis, we had a very special wine tasting at the end of April. Louis is unhappy with the quality and range of reasonably priced French wines easily available in the UK so, as well as his own superb wines, is now making additions to The Grampus Wine List. These come from producers that he knows well and respects for their high standards & it was six of these lovely wines that we tasted which included the following:

Côtes du Marmandais: Le Vin est une Fete - young, light & fruity, ideal for hot summer evenings!

Côtes du Marmandais: Abourai (pronounced "I bore you") - the wine name is also the name of the ancient vine varietal which is now only known from this one vineyard, keeping a delicious product alive.

Ch. Bandol de Pibarnon from the southern Rhone: 10% Granache 90% Mourvedre - a very difficult varietal to grow well as it is at this estate bio-dynamically! Full of intense flavours.

Also Reisling Alsace "Le Dragon", a Pouilly Fumé and a Chablis.

We now have custom-designed bar clips for The Grampus Ale and The Grampus Bitter thanks to friend and fellow musician, Ben. They are worthy of a close inspection when you're next in to see us.

If you are interested in a tour of the micro brewery, please ask me.



The brews made so far have been widely appreciated.

The shaker box workshops have been very successful and enjoyable, with all participants going home with something they were proud to have made.

We continue to add to our list of countries from which our staff originate - one of the next arrivals is actually SAILING across the Atlantic to be with us!

Welcome to The Grampus!

Bill

LEE OLDE ENGLISH SPRING FAYRE

Lee Olde English Spring Fayre was held on Monday May 26 – the fayre was opened by the Town Crier from Ilfracombe who was splendidly dressed in his impressive outfit and the new Mayor also came along, both with their respective wives. The sun was shining and the queue to come to the fayre stretched way down the road with visitors and locals anxious to join in the fun.

Delicious lunches, cream teas and homemade cakes were served in the hall and as always these were very popular with a constant stream of customers. Out in the meadow there was a new event this year, welly wanging, which was great fun and attracted both adults and children with prizes for those who threw the welly the furthest! There were homemade cakes for sale, guess the weight of the cake, strawberries and cream, bbq, plants, books, bric-a-brac, children's toys, craft stall, raffle with great prizes, coconut shy, penalty goals, hoopla, tombola, a treasure hunt, floating ducks, Round the Horn and a children's fancy dress competition as well as several other games of skill, in fact something for all ages.

In St Matthew's Church Beaford Arts brought children's theatre by White Hippo Productions, The Boy Who Fell in Love with the Stars, and this was popular with families with younger children, both performances being a sell-out. During the afternoon there was folk music which added to the relaxed atmosphere of the fayre.

The proceeds from the fayre amounted to just under £3000 – a fantastic result – St Matthews Church will receive one third of this with the remainder to Lee Memorial Hall. There will be a further amount to add to this from the Beaford Arts children's theatre.

A huge THANKYOU to everyone who took part and made the event possible and to everyone who came along – we could not have done it without you!



On the cake stall, the ladies guard the vast array of delights on offer before everything disappeared very quickly.

LEE OLDE ENGLISH SPRING FAYRE CONTD.



Everyone came out in the afternoon sun to enjoy the fayre. Andrew Ailes (right) suitably dressed for the occasion.



The adult winners of the new Welly Wanging competition are presented with their golden welly trophies.

BOOKING LEE MEMORIAL HALL

With all of the major improvements to the hall having been completed it now provides an ideal venue for that family party, wedding celebration or any other special occasion.

For more information and details of hiring charges and availability please contact the bookings secretary:

Angie Ellis
angelahallreservations@talktalk.net
(01271) 865818

or if Angie is not available then please contact

Martin Johncock
johncock.2.2@gmail.com
(01271) 269751

More information can be found by visiting
www.leebay.co.uk/village_hall.htm
and then click on the link
www.devonvillagehalls.co.uk/lee



LEE MEMORIAL HALL UPDATE



Since our last update we have said goodbye to our Chairman Ian Stuart, following a particularly busy final year leading the committee. We have

much to be grateful for his efforts in securing funding for the marvellous refurbishment of the village hall, culminating in the official re-opening on 8 March. This was a successful get together of villagers, funders and contractors who all enjoyed some marvellous food and drinks and a slideshow of the work in progress. We now have a very welcoming hall with a pleasant ambient temperature at all times.

We said goodbye to Ian officially at our AGM on 14 April and presented him with a Bay tree for his garden which he will be able to spend more time in now!

Since then our main event has been the Spring Fair on 26 May, a beautiful sunny day with a brilliant turn-out. It was great to see our new residents joining with long standing villagers, in the setting up of the fair, as well as running stalls and clearing away too. Many thanks to all the helpers and particularly Ally Poore and Edna Thompson for taking charge of the organisation. We raised £3000 and it was a great success.

Our next event is the annual Arts and Crafts Exhibition running from Saturday 2 August until Sunday 17 August. For the second year running, Sandy Hanson has arranged the artists and artisans for the exhibition. Cynthia Stuart is busy organising the helpers and refreshments. Please get in touch with her if you can offer help of any sort. All looks in place for a brilliant fortnight, please come along and support us if you can.

Jane Johncock, Secretary

LEE VILLAGE FLOWER SHOW

We had a very successful coffee morning in May, raising a grand total of £354.25. Thank you to everybody who supported us on the day, and for all the contributions of cakes, plants and raffle prizes.

The Lee Flower Show has again purchased six hanging baskets for the village, hung in May in time for the Village Fayre. They do look lovely, planted up for us by 'Streamways'. A big 'thank you' to Louise and Edna Thompson and Geoff Potts for keeping them fed and watered throughout the summer months.

We have recently welcomed two new members to our Committee, Margaret and Alan Bannister have kindly offered to join us. We look forward to their input and those extra pairs of hands on Flower Show day.

The Flower Show is on Thursday 31 July. Schedules and entry forms are available from me at 'Rose Cottage'. I hope you are all busy nourishing and nurturing your 'Chairman's Choice' fuchsias - the glass trophy for the winner, is the one you get to keep! Look forward to seeing you all there.

Carolyn Weekes, Secretary.



WATERCOLOUR WORKSHOP

Now at Lee Memorial Hall
Lee EX34 8LW



2nd Wednesday each month
10am – 4pm
£10 per person
Please bring your own lunch

Please contact tutor
Brenda Keeble
(tel: 01271 863367)
for further details

A RETURN TO LEE AND OUR CHILDHOOD

My sister and I made another nostalgic trip to Lee Bay in September 2013. For those who don't know us, our grandparents on our father's side lived at Ware Park Cottage, so spent many of our childhood holidays in Lee Bay. We have previously written in the Spring, Summer and Autumn editions in 2001.

Once again we see lots of changes, some good, some not so good but then nowhere stays the same.

We visited The Craft Shop and saw a school photo with our father in it. We had a long chat with Edna who was 'minding the shop'. During the conversation we were invited to the Harvest Festival Service and Supper on the Sunday evening. It was good to see the church so full and many thanks to all those involved in the Supper, an excellent way to spend our last evening.

It is sad to see so many of the properties are now holiday homes but despite this there seems to be a busy social life in the village. The Lee Bay Hotel is still in a sorry state but could there be change in the wind? We

were told a man, possibly a surveyor, had been seen at the site.

We enjoyed walks over the links and down onto Bathing Beach (Sandy Cove) as we knew it. I couldn't believe how high the cliffs were, we used to scramble up and down.

Like many others we are researching our family history. We visited places that relatives either were born, lived or worked: Halsinger, Marwood, Heaton Punchardon, West Ashford, Upcolt, Bearer Down and Winsham Farm. I wonder what they would think of Damien Hirst's plans for Winsham?

The hospitality at Shaftsboro Farm was very good, we dined well at The Grampus Inn, everywhere we went people were most welcoming. Thank you.

My name was Brenda Williams, I'm now Brenda Key and my sister is Valerie Eland.



A holiday snap from the Lee Bay Hotel balcony back in 1999.

Lil Baker



1923 - 2014

Lil passed away at North Devon District Hospital after a short illness aged 90. She was a 'local', being born at Morteohoe and attending Woolacombe School.

She married Ken Baker at Woolacombe Methodist in 1948 and they lived in Higher Slade until 1951 when they moved to Meadowdene at Lincombe, just before Laurence and Julia were born and Keith arrived 4 years later.

In the mid 1960s they moved to Lincombe Farmhouse and Lil was very busy with the B&B and evening meal for up to twenty guests. She also did the bookings and cleaning caravans for the campsite and also found time to make clotted cream which was posted around the country.

The farmhouse was sold in 1977 after Julia married and was no longer able to help. Lil didn't retire though and after her morning Bible reading she would bake (being very well-known for her shortbreads, delicious cakes and roast dinners) and knit - for the grandchildren, charities and several nativity scenes - two of which went to Australia. And she always had time to help anyone who needed her.

Day trips around the county led to Ken buying a caravanette but Lil liked her own bed so they didn't stay away often!

She leaves husband Ken, three children, six grandchildren and ten great grandchildren, who all miss her dearly.

Alf Keeble



1930 - 2014

Alf was born in 1930 in Leytonstone, the fourth of eight children. When he was four years old the family moved to Barkingside in Essex where he eventually passed the Scholarship to attend Buckhurst Hill County High School. He continued to live in Barkingside after his marriage to Brenda until he moved with his own family in 1964 to Clacton on Sea.

Although Alf had a varied working life he never really settled into a career. He wanted to be a Chartered Accountant but money was tight in such a large family and his only option was to become an Articled Clerk without payment, which involved being covered by an insurance. Unfortunately Alf had lost his right eye in a tragic accident when he was two years old and therefore could not be accepted in this scheme.

Alf managed to use his skills in accountancy for several years, then became a sales representative, which he enjoyed, finally he decided to become self employed and ran a variety of businesses including light transport. At the age of sixty two he was forced to take early retirement when he contracted Ménière's disease.

With their two sons and their families happily settled, Alf and Brenda decided to move right away from the east coast and found their perfect home in Lincombe. For the next nineteen years they grew to love the village, the people and their way of life, which was quiet and modest, but they were deeply contented.

It was a bitter blow to them when, having recovered from breast cancer four years ago, Alf was diagnosed with acute myeloid leukaemia. He died in North Devon Hospice on January 15th, two days after his 84th birthday and three weeks before our 60th wedding anniversary. He is so sadly missed by his family and all the friends, old and new.

He will be remembered as a big, gentle, quiet man and our son Robert summed up his feelings eloquently at the funeral. "Some men can be defined by what they say and do, Dad just needed to be there, that was enough."

He leaves his wife Brenda, sons Stephen and Robert, a granddaughter, five grandsons and three great grandsons.

Julian Grenfell Clark



Died March 2014

Born in Babbacombe, near Torquay, artist Julian sought to return there upon his retirement. However, he found it had become so much more crowded with buildings and traffic than he remembered, so he decided to look elsewhere for a quiet, attractive village, with seaside and open spaces.

Lee Bay was exactly what he wanted, and Julian lived his twilight 25 years in The Grange, surrounded by woods, a stream and delightful cliff walks. It was the ideal retreat for Julian and a perfect place for his artist's studio.

His overwhelming passion was painting. He created numerous pieces, many of which were displayed in the halls of The Grange and he often used the village as his inspiration. His close neighbours were also treated to handmade and beautifully illustrated Christmas cards year after year.

Julian also enjoyed his early morning walks down to Lee Bay, regular journeys on the bus into Ilfracombe, and also the company of many visiting cats from the surrounding houses that happily took up his offer of an open window and tasty treats.

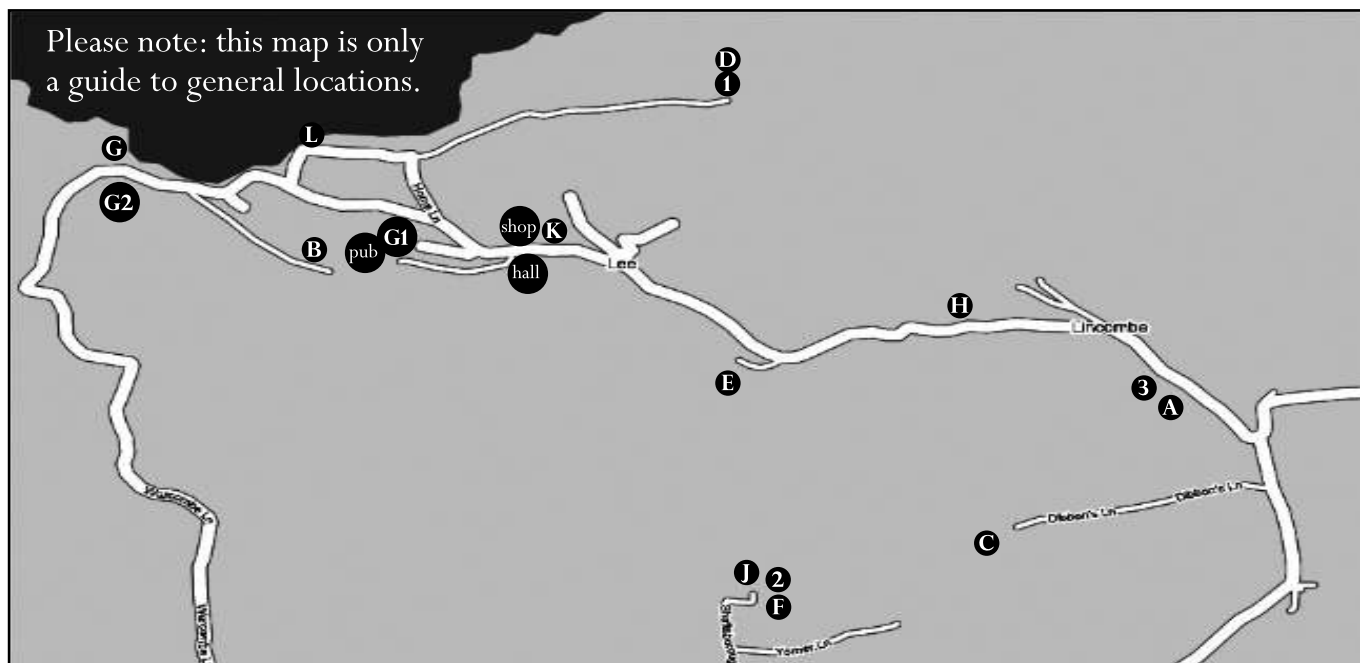
LEE & LINK'EM NEWS TEAM

Editorial team	Gina-Luisa Hilborne Heather Booker Ian & Cynthia Stuart	gina@loveleebay.co.uk Tel: 862409 Tel: 863396
-----------------------	---	---

Production	Ian & Cynthia Stuart	Advertising	Heather Booker
-------------------	----------------------	--------------------	----------------

Delivery teams *Many thanks to our delivery teams. If you would like to help with delivering the News, one of the editorial team would be delighted to hear from you.*

LEE & LINCOMBE ACCOMMODATION & SERVICES GUIDE



VILLAGE SERVICES

- pub. Pub, Tea Rooms & Village Shop: The Grampus Inn - www.thegrampus-inn.co.uk - Bill Harvey _____ (01271) 862906
- shop. The Old Schoolroom Craft Gallery & Gift Shop - www.noonoo-art.co.uk - Louise Thompson _____ (01271) 864067
- hall. Lee Memorial Hall - for hire: angelahallreservations@talktalk.net - Angie Ellis _____ (01271) 865818

NATIONAL GARDENS SCHEME (GARDENS OPEN TO THE PUBLIC)

- G1. The Gate House - notice on gate or call, no charge - donations to NGS _____ (01271) 862409
- G2. Cliffe Garden - 30 Apr - 12 Sep: 10-4pm daily - £3 donation to NGS

BED & BREAKFAST

1. The Blue Mushroom (2/3) - mushroomblue@btinternet.com - Mavis & Michael Rogers _____ (01271) 862947
2. Shaftsboro Farm - www.shaftsboro.co.uk - Margaret & Frederick Kift _____ (01271) 865029
3. Pensport Rock - www.pensportrock.com - Jackie Jackson _____ (01271) 863419

SELF CATERING (MAX. PER UNIT)

- A. Lincombe House (2,6,5) - www.lincombehouse.co.uk - Richenda S Carter _____ (01271) 864834
- B. Chapel Cottage on Beach Lane (9) - www.chapelcottagelee.co.uk - Ginny Potts _____ (01271) 867212
- C. Lower Campscott Farm (8,6,6,4,4,4,2+) - www.lowercampscott.co.uk - Kathy & Tony Mortimer _____ (01271) 863479
- D. The Blue Mushroom (2/3) - mushroomblue@btinternet.com - Mavis & Michael Rogers _____ (01271) 862947
- E. Crowness Cottage (4) - www.crownescottage.co.uk - Irene Duffield _____ (01268) 742162
- F. Shaftsboro Farm - www.shaftsboro.co.uk - Margaret & Frederick Kift _____ (01271) 865029
- G. Damage Hue apartment (2+2) - www.damagehue.co.uk - Julien Busselle _____ (01271) 862876
- H. Lee Chapel (5) & School House (4), combined (9) - www.visitleechapel.co.uk - Geoff Barker _____ 07870 239 973
- J. Allender Farm (8,6,6,5,2+) - www.allenderfarm.co.uk - Jane & Jim Bridges _____ (01271) 866679
- K. The Old Vicarage (15) - www.theoldvicaragelee.com - Amanda Robertson _____ 07973 963 887
- L. Millfield (6) - www.millfieldcottage.co.uk - Louise Morris _____ bookings@millfieldcottage.co.uk

The opinions expressed by authors of the articles in the Lee & Link'em News are not specifically endorsed by the editorial team which cannot be held responsible for them.

AUTUMN 2014 ISSUE DEADLINE - 01 OCTOBER 2014

Article formats: typed into an email or DOC format and emailed to gina@loveleebay.co.uk. No floppy disks or handwriting please.

ALL ADVERTISING MUST BE PAID FOR BEFORE THE COPY DEADLINE OR IT WILL NOT APPEAR.