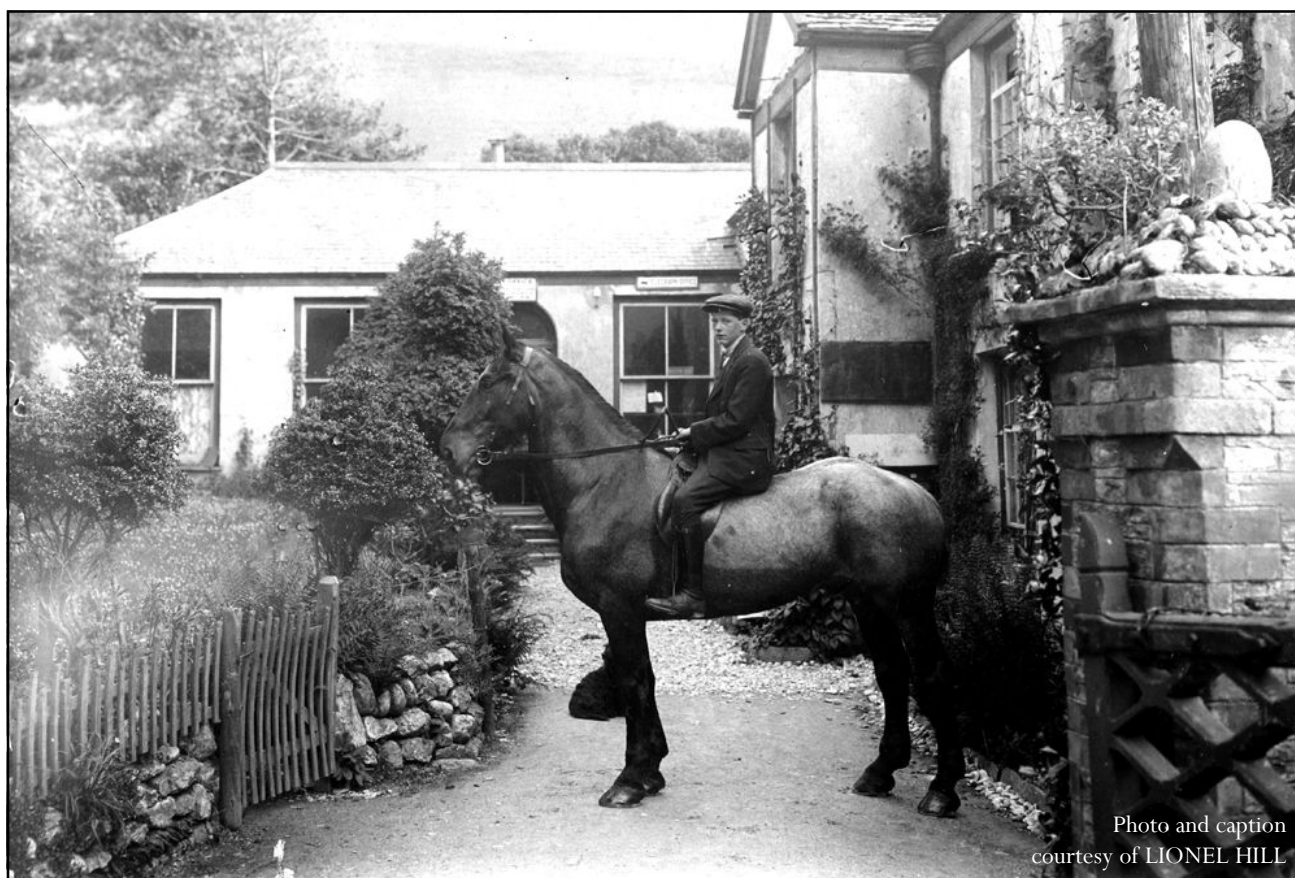


FOR THE RESIDENTS OF LEE & LINCOMBE VILLAGES  
AND SURROUNDING AREAS AND OUR VISITORS

# LEE & LINK'EM NEWS

AUTUMN 2009

50P



LIONEL HILL, SON OF CHARLES HILL, WAITS ON HIS HORSE OUTSIDE  
THE 'LEE HOTEL' BEFORE EMIGRATING TO NEW ZEALAND IN 1912.  
KILLED IN ACTION AT THE BATTLE OF THE SOMME.

[www.leebay.co.uk](http://www.leebay.co.uk)

## LEE AND LINCOMBE – FUTURE DATES FOR 2009

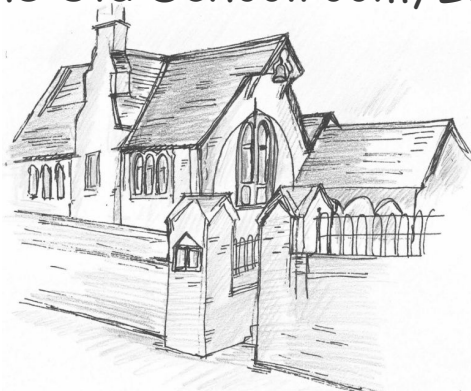
### VILLAGE DIARY

Friday 16 October 7.00 pm	Felt making workshop – Memorial Hall
Monday 19 October 8.00 pm	Agnostics Anonymous – Grampus
Wednesday 21 October 9.30 am	Felt making workshop – Memorial Hall
Wed 28 October from 11.00 am	Autumn Bazaar: stalls, lunches and teas – Memorial Hall
Sat 31 October from 5.00 pm	Mini Monster's Ghostly ramble - meet at The Grampus Inn
Tuesday 3 November 7.30 pm	Lee & Lincombe Residents' Association meeting – venue to be arranged
Monday 23 November 8.00 pm	Agnostics Anonymous – The Grampus Inn
Friday 27 November 7.30 pm	Concert by the Exmoor Carollers – St Matthew's Church
Monday 21 December 6.30 pm	Village Carol Service – St Matthew's Church
Thursday 24 December 10.00 pm	Christmas Communion service – St Matthew's Church
Wednesday 30 December 12 noon	Sponsored swim – Seafront (Further details from Penny Measures and David Perry 866535)
Every Monday 10.00 am – 1.00 pm	'Mini Monsters' – Memorial Hall (Kate Madden 865591)
Every Monday 5.00 pm – 6.00 pm	Pilates – Memorial Hall (Penny Measures 866535)
Every Thursday 6.00 – 7.00 pm	Yoga – Memorial Hall (Alex Giffoni 07794917675)
Friday evenings from 8.00 pm	Open mic nights at The Grampus Inn (see Grampus article for more dates)

**PLEASE NOTE: Lee Memorial Hall will be completely closed for building work from 02 November 2009 until early 2010 so events falling between these dates will be relocated**

*If you would like anything included in the diary for the next issue, please contact an editor.*

### The Old Schoolroom, Lee



**CRAFT GALLERY AND  
GIFT SHOP**

**Local crafts, Hand painted Glassware,  
Pottery, Jewellery, Greetings cards,  
and more!**

Open Tue - Fri 1pm to 4pm and Sat 11am to 5pm  
(closed Sun & Mon) until the end of October. During  
the remaining Autumn and Winter months opening  
times will vary - please ring 01271 864067, 01271  
862371 or check [www.noonoo-art.co.uk](http://www.noonoo-art.co.uk) before  
making a special journey.

**SPECIAL CHRISTMAS SHOPPING  
EVENT - DETAILS WILL BE  
ADVERTISED SOON!**

[sales@noonoo-art.co.uk](mailto:sales@noonoo-art.co.uk)

**Tel: 01271 864067**

## MACMILLAN CANCER SUPPORT

Louise, Daisy and Edna would like to thank everyone who supported their fund raising event at The Old Schoolroom on Saturday 26<sup>th</sup> September.

We raised £250.36 from serving coffee, tea and homemade cakes, proceeds from the raffle, Name Teddy competition and we also received many generous donations. The weather was definitely in our favour and our guests were able to enjoy their refreshments in the marquee out on the lawn! Once again, thank you all for your support.

Edna Thompson



## SUBSCRIBE TO THE LEE & LINK'EM NEWS OR VIEW ONLINE

Our thrice-yearly newsletter is free to residents, and available to non-residents at 50p from The Grampus Inn or The Old Schoolroom Craft Gallery & Gift Shop.

We offer postal annual subscription (3 issues) to non-residents, delivered to your door for £3.00 per year. If you would like to subscribe, please contact the editors with your details and any remittance.

And now, thanks to sponsors, the Lee & Link'em News is also freely available online to read and/or download. Please visit [www.leebay.co.uk](http://www.leebay.co.uk) and follow the links.

### WRINKLEWOOD POTTERY

We offer small classes for children from the age of 7 upwards on a Saturday. We like to give the children a hands-on experience of clay allowing them to be as creative as possible with adult guidance and support. We provide technical tuition to ensure successful outcomes.

Saturday Mornings from 10am to 12.30 or a shorter session for younger children from 2pm to 4pm

We also offer individual taster workshops during school holidays for locals and children on vacation.

Adult classes/taster sessions available by prior arrangement.

For more details, please ring Penny or David on 866535  
Wrinklewood, Lee Bay, North Devon



## LEE & LINK'EM NEWS TEAM

### Editorial team

Gina-Luisa Hilborne  
Heather Booker  
Ian & Cynthia Stuart

Tel: 864876    [gina@loveleebay.co.uk](mailto:gina@loveleebay.co.uk)  
Tel: 862409  
Tel: 863396

### Production

Ian & Cynthia Stuart

### Advertising Manager

Heather Booker

### Delivery teams

Bryan & Helen Lye; Alun Dobson & Becca Wyles

## GREETINGS AND FAREWELLS

There have been relatively few movements in and out of the village recently but we are very pleased to welcome Sarah and Kerry Kirby and their family to Gull Cottage. Kerry is a builder and has been working in Spain. The family have moved from south of Granada and it is good to have 3 more children in the village – Ellie (10), Joel (7) and Bethan (3). Ellie and Joel are expert Spanish speakers being bilingual in English and Spanish!

Next door to the Kirbys, at Seal Cottage, is Robin Lawson. We apologise for not welcoming Robin in the previous edition of the News but we are pleased to do so now. Robin is a Londoner by birth but has come to Lee via North Wales. He is an author and has just submitted his first novel to publishers!

We are sorry that Gus and Coral Colclough have left Beach Cottage. Although they did not live here permanently, they took an active interest in village life when they were here and had many friends in the village. We welcome the new owners, Nick and Zoe Veasey and their children Molly (8) and Herby (5). They are using their home here for themselves and their family and hope to spend much time here.



---

## FESTIVE SWIM 2009

This year's Festive 'Dip' will take place on Wednesday 30th December at 12 noon. Meet at Lee Bay, on the beach. All welcome at Wrinklewood for mince pies and mulled wine afterwards.



Last year our brave swimmers (pictured above) and onlookers raised £535.40 which was shared between Lee Memorial Hall and the RNLI.

Once again, fancy dress is optional - this does add to the occasion! - and we are amazed at the fantastic outfits, some obtained from local charity shops!

Please contact David or Penny on 01271 866535 for a sponsor form if you are brave enough for this challenge. Please make a note of the date in your diary and come along and support us on the day. Any proceeds will be donated to a local worthy cause.

Penny Measures



## **16 HIGH STREET ILFRACOMBE**

**Tel: 01271 863558**

**Proprietor: SUE ADAIR**

**Open 8 - 5.30 pm Monday-Saturday**

**FREE Local Deliveries**

### ***Ilfracombe's Health Store***

*Assorted cheeses, freshly ground coffee  
A wide selection of nuts, pulses, dried fruits,  
teas, herbs & spices.  
Homeopathic medicines and aromatherapy oils.  
And a great deal more.*



## **HOME CLEANING SERVICE**

**Window Cleaning, Gutters,  
UPVC, Roof Cleaning, etc.**

**Well-established in your area  
since 1990**

**Tel: 814 965  
or 07855 110 524**

# **L & R Drycleaners**

**at your service - tel: 01271 814169 (Braunton)**

**IF YOUR CLOTHES  
ARE NOT BECOMING  
TO YOU...**



**...YOU SHOULD  
BECOMING TO US!**

Laundry Service: duvets / shirts, etc.  
*Choice of powders: Ariel bio / Persil non-bio*  
*Hand finishing / wash, dry, fold*

Repairs and Alterations Service  
*with our in-house seamstress*

Other services include:

- Rug cleaning
- Re-waxing of jackets
- Wedding dresses cleaned / boxed
- Shoe repairs
- In-house cleaning of wedding / designer shoes
- Suede / leather cleaning

**MON-FRI: 8-5pm SAT: 8-1pm - FREE COLLECTION & DELIVERY SERVICE**



## LEE W.I. REVIEW FOR 2009



“THIS YEAR  
WE HAVE  
FIVE NEW  
MEMBERS  
MAKING A  
TOTAL OF  
29”

Since I was elected and took over from Margaret Hill in November 2008 the year has gone by very quickly, as they seem to do the older you get. As we are about to have our Annual meeting again next month I thought I would do a complete review of the year to show prospective members and readers what a lively and busy WI we are. This year we have five new members making a total of 29, 14 who live in Lee and Lincombe and 15 from Mortehoe, Woolacombe, and Ilfracombe. We have a small but perfectly formed committee of 6 but are hoping that this number will increase next year. Sadly we lost a past member, Jean Jones, who had moved away 3 years ago.

At the Christmas Candlelit Supper, my first event as President, I presented Biggi Wright with the Lee W.I. trophy for the Flower of the Month. A hall packed with W.I. members and guests then enjoyed a delicious meal.

Ruth Tubb and myself went by coach with other Lundy Group members to sing at the Christmas Carol Concert at Exeter Cathedral and are doing this again for 2009.

In February we held a village pancake race and coffee morning and the W.I. race was won by West Down.

In April we did a village road clean up with the help of a couple of villagers. Twelve black bags of rubbish were collected along the road from Lincombe X to Lee Bridge and several other full bags elsewhere.

Our evening meetings included several interesting talks from Womens Aid, Tunnels Beaches and Nick Pedlar about his career in retail and an outing to paint pots and other items at the Golden Coast park.

Wearing our new Lee W.I aprons embroidered by Margaret Hill, we served cream teas in the hall and also manned the cake stall at the Lee village fayre.

Paula Ferris and Paul Madgett from the Marine Conservation Society organised a beach walk at Lee beach on World Oceans' Day in June and they showed us rare creatures and plants that



### For Wills, Trusts, Powers of Attorney

Barry Jenkinson

01271 867068

[barry@westcountrywills.com](mailto:barry@westcountrywills.com)

- Protect your assets against **long term care** costs
- Ensure your **partner's needs** are protected after your death
- Make **your wishes known after your death**
- Ensure **guardians and trustees are appointed to look after your children**
- Make arrangements should you ever become **mentally incapable**
- Make sure a **disabled child** is cared for after you die.
- Ensure your **inheritance worries are taken care of**

**WWW.WESTCOUNTRYWILLS.COM**

## LEE W.I. REVIEW FOR 2009 - CONTD.

you would not normally notice in the rock pools.

Margaret Cowell took over as President for Members evening to give the committee a break.

Twelve members went to the Lundy Group Spring annual meeting, with magical entertainment and a meal at Woolacombe hall. Four members went by coach to the Devon Spring Annual Meeting at Exeter University.

In June we invited several local care homes to bring residents for a musical cream tea. We were blessed with a sunny afternoon and this event was a great success and is set to be a regular item on our programme.

The W.I. committee entered Mavis Rogers for two awards for her tireless work fighting Japanese Knotweed. We are thrilled to report that she has now received a North Devon Conservation award at a ceremony at Barnstaple Guildhall and will also be presented with the Devon W.I. Rose Bowl at the Autumn Council meeting at Torquay in October.

I was fortunate to receive the Lee W.I. bursary to pay for a residential visit to the Denman W.I. college when Wyn Bullock was unable to go. I took a singing course and Brenda Keeble and Margaret Hill also went and did courses in painting and patchwork.

Unfortunately the swimming club organised by June Saffin had to fold because the Woolacombe Bay Hotel pool was now not suitable for normal swimming. The Book Club and Fuchsia Valley Quilters groups are still going strong.

Later this week members and guests are off on our annual Presidential Walk. This year we are starting with lunch at the Station Inn and then walking around Wistlandpound Reservoir, followed by tea and biscuits and a tour of the Calvert Trust.

A full programme is again being planned for next year with contingency for the closure of the hall for the building work.

Interested in coming along? Our meetings are on the second Thursday of the month at 7.30pm.

Telephone me on 863628 or secretary Margaret Hood 871077.

We look forward to seeing you.

Pat Seymour, President



"THE W.I.  
COMMITTEE  
ENTERED MAVIS  
ROGERS FOR  
TWO AWARDS  
FOR HER  
TIRELESS WORK  
FIGHTING  
JAPANESE  
KNOTWEED."



### The Orchard - B&B

Ginny & Geoff Potts



- VICTORIAN HOUSE
- THREE GUESTROOMS
- WOOD BURNING STOVE
- EXTENSIVE GARDEN
- VARIED EVENING MENU

Ginny is happy to cater for vegetarians,  
vegans and anyone with special  
dietary requirements.



Lee, North Devon, EX34 8LW  
**Tel: (01271) 867 212**

ginnypotts@hotmail.com  
www.theorchardlee.co.uk

## THE LOST TEAHOUSES OF LEE

BY R D HOWARD



"THE LAST  
MEALS SERVED  
AT THE OLD  
MILL WERE IN  
1983."

I propose to walk in my imagination from The Old Mill, across the seafront, and up the lane to the village, as far as Miramar (now The Grange), then back through the village, to the area of Home Lane, up to the coast road, and towards Ilfracombe, until stopped by the gate across the road, noting tea houses and gardens as I go.

It must be remembered that these businesses were seasonal, and ran roughly from Easter until the end of the summer. Usually the whole family would pitch in and help out.

It was a case of making your money while the sun shone. Most of them had cover if it started to rain, whilst many of them sold picture postcards of their establishments. These are now collector's items and are avidly sort after.

THE OLD MILL: The Old Mill served teas from just before the Second World War, but it was just after the war in 1946 that Mr Jack Isaac and his daughter Vera started in earnest. Vera Isaac married Mr Edward Milne and they took over the business after the death of her father, and ran it until they closed it down in 1984. The last meals served at the Old Mill were in 1983. They used to do teas to take away, with all the cups, teapots, plates, etc., in a tomato box, on which I believe there was a ten shilling deposit.

LEE BAY HOTEL: Although strictly not a tea house I have included the Hotel in this list as they did serve teas to people who asked. In the earlier years this would have been the more well to do people. But as the years passed, especially after the second war, this division was not evident. From about 1950 all classes would partake of teas.

From 1980 teas were served in the new bistro which also had the added advantage of a public bar; so from about 1896 until 2007, with a break for the war from 1940 till 1946 and when the Hotel was closed between owners in 1991 and again in 2008/9, the hotel has served the public for over one hundred years.



THE SMUGGLERS COTTAGE: The first reference I can find to a tea house at The Smugglers Cottage is for 1897, when Mrs Giddey was running it under the name The Beachside Teahouse. In about 1912 it was variously known as Ye Olde Beachside teahouse or Cottage. At this time they sold fruit and cream, mineral waters and refreshments, and according to a notice board out side the cottage, teas were 9<sup>d</sup>. They appear to have served

### Home-reared **DEXTER BEEF**

Lower Campscott Farm - tel: 01271 863479

LEE, ILFRACOMBE, DEVON EX34 8LS



The beef is professionally slaughtered/  
butchered and vacuum packed to ensure  
it reaches you in perfect condition.

A 30lb box of mixed joints,  
steaks and mince = £120



## THE LOST TEAHOUSES OF LEE CONTD.

teas up to the start of the second war.

After the war Mr Anthony turned the cottage into a tourist centre with stories of smugglers and wreckers, and opening a shop in one of the rooms to sell knick knacks.

The teas part of the business was transferred to the piece of ground next to the Cottage. A timber teahouse was constructed in front of the old cow shed that stood there, and this was used as a kitchen where the meals were prepared.

Later Shell Cottage was constructed on the cow shed. By 1961 Mr Howard of the Hotel, owned the cottage, selling it to Mr Smith the following year. He put a new roof on it in 1963. In 1968 Mr Smith built the covered way extension on the side of the cottage.

In October 1972 the Clement family moved in, having bought the cottage. They sold it in 1983 to Mr and Mrs Mortimer who promptly put in a planning application for change of use from residential, to seasonal tea rooms /restaurant. This was granted before the start of the 1984 season. Apart from that season it has hardly opened for business.

**BEACH HOUSE:** In 1968 Mr Smith of the Lee Bay Hotel demolished the old boat/coal house, and built a gift shop and teahouse called The Lobster Pot, in its place, teas were probably served from 1968 until about 1983. Audrey Clement ran it for the Hotel from about 1973 until it closed in about 1983.

**SHELL COTTAGE:** This was constructed on top of an old cow shed which served as the kitchen to the tea gardens and timber teahouse on the property. The Wadeson family, builders from Wigan in Lancashire, built it about 1955, to live in during the summer months, while they ran the tea gardens. They had spent the previous two summers living in a caravan. I can remember helping to pick up the limpet shells that cover the outside walls. My brother bought it from The Wadesons in 1958, and ran the tea gardens until he sold them to Mr Smith, who had just bought the Hotel, in 1962.

**CHAPEL COTTAGE:** This Cottage was not a tea garden for very long, perhaps three years from 1968.

**The FUCHSIA TEA GARDENS:** These were known first as Lee Park Tea Gardens. This was in 1927. By 1931 it was known by the name The Fuchsia Tea Gardens and Mr Carruthers Bell ran it till he died in 1961, and it has been a private house ever since.

**THE OLD FARM:** This was another tea garden with a claim to be the oldest in Lee. I have a record of a tea garden here going back to 1899, but it is clear that teas were served from a much earlier date. John Stapleton had the farm then, but the area was known as Nether Warcombe or Lower Warcombe.

Ernest Armstrong and his wife were the next owners. Mabel Armstrong had worked at the tea gardens before she married Ernest. He continued to farm there; with his wife running the tea gardens for, it is said, thirty years. Then his daughter Mary and her husband Mr Daniel took over the running of the Tea Gardens, for the next thirty years until about 1958, when Derek Jeffery became tenant of the farm. He bought the farm outright in 1961 and his wife Jane ran the tea garden for a short time. When Jane found she could not give the tea gardens the attention they needed, her mother, helped by Mrs Cross, took over.

In 1971 or 1972 Derek sold the farm back to the Armstrong family, who turned the farm into The Grampus Public House. I believe that the tea gardens were opened in the summer months by a variety of people renting them from the pub. About 1981 Mr and Mrs Palmer took over the running of the pub until 1987 then sold to Mr and Mrs Nustedt, and they ran it till early in 2004. I don't think teas were served while the Palmers or the Nustedts owned the tea gardens. In early 2004 Mark and Mandy Collins took over and I am told served teas in the pub as opposed to the tea gardens. They left in December 2007 and Mr Bill Harvey took over. He has since served teas on a patio in what was part of the original tea garden. Now in 2009 it is the



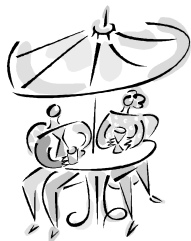
"MR ANTHONY  
TURNED THE  
COTTAGE INTO  
A TOURIST  
CENTRE WITH  
STORIES OF  
SMUGGLERS AND  
WRECKERS"



"MABEL  
ARMSTRONG  
HAD WORKED  
AT THE TEA  
GARDENS  
BEFORE SHE  
MARRIED  
ERNEST."



“IN 1971 THE  
POST OFFICE  
WAS SPLIT  
BETWEEN TWO  
BROTHERS. ”



“THIS MOBILE  
BUILDING ON  
THE COAST  
ROAD HAS BEEN  
DESTROYED BY  
THE WIND AT  
LEAST TWICE  
SINCE 1970.”

## THE LOST TEAHOUSES OF LEE CONTD.

only place in Lee open for teas apart from the sporadic opening of the Memorial Hall.

**THE OLD POST OFFICE:** Has served teas from at least 1900 and probably long before this date. In 1930 they were still serving teas here. But since 1950 there has definitely been no tea house here.

**THE OLD ORCHARD TEAGARDENS:** Captain Duke opened this Teagarden in about 1923/4, and it ran for the best part of 16 years until the second war.

**THE POST OFFICE:** From at least 1911 teas were served in the small garden opposite the house (now a car parking space). This went on until about 1930.

**THE Lych Gate TEA GARDEN:** In 1971 the Post Office was split between two brothers. Young Vic Hill obtained the Post Office and part of the house, and his brother Lionel the Lych Gate part of the house. The Teagarden was given permission to operate in 1984, although it had operated for two year before that. In 1986 Lionel's holding was sold to a couple of ladies from Kent. They did not stay long and sold up the following year to Mr and Mrs Satchwell. By 1991 it had been sold again this time to Mr Michael Stone who in turn sold it to Mr B Watts in 1994. In the meantime Young Vic Hill had sold the Post Office and his part of the house to Mr and Mrs Airey and Mrs Calvert, this was in 1972. They ran the Post Office for eleven years until they sold out to Mr Wharton and his family in 1983.

On the 14 of November 1994 the Post Office was closed down by the head Post Office. Early the following year Mr B. Watts of the Lych Gate offered to buy the property and was accepted. Now the property was combined again after about 24 years. In 1996 the whole lot was sold to Mr and Mrs Seymour who ran the tea gardens for the next nine years until they sold to Mr and Mrs Sweeney in 2005. Since that year the tea gardens have been closed.

**THE GRANGE:** For a very short time, some time between 1988 and 2000, it was possible to get afternoon tea at The Grange.

**THE WAYSIDE TEAHOUSE:** This is one of the first Teahouses in Lee built by old Mr Giddey in about 1889, while he was living at Shepton Villa in the village. First known as Giddeys Teahouse, then as Giddeys (Central) Teahouse. It seems to have been built specifically as a tea house. In 1951 and 1952 I can remember going there many times to drink a bottle of Dornats American Cream Soda, while sitting on the veranda. We were usually served by Young Vic Hill who ran it at that time with his wife Aileen. I think I must have been one of its last customers as soon after this, it closed as a teahouse.

**ELSTEAD:** This mobile building on the coast road has been destroyed by the wind at least twice since 1970. A fate unlikely ever to happen again as I believe its replacement is partly buried in the ground, and has been renamed Sunsets. It has been reported that during the eighties and nineties mugs of tea could be obtained here, by thirsty walkers.

**THE BLUE MUSHROOM:** Was built in 1924/5 by Mr Charles Ley and his father, for the sum of £250, so it is reported. At first it was called Sea View Bungalow, then Lee Downs Café and finally in about 1930, The Blue Mushroom. It was a tea garden until at least 1957. There was then a break of perhaps 24 years until 1981, then a short revival of maybe four years until 1985. Since this time it has been a private house. It is thought to have taken its unusual name from the toadstool, *Tricholoma Saevum Personatum*, otherwise known as Blewits, which grows on the property.

**THE MEMORIAL HALL:** Finally I feel I must mention another place that has only recently started to serve cream teas to the public. This is The Memorial Hall, to raise money for the building of new amenities to the Hall, and to help the church. Teas were served in the hall in 2008 and 2009. Also during my research, it was reported that for a very brief time Lincombe House at Lincombe served teas, sometime during the 1980s.



**Need help from reliable,  
intelligent local people?  
Contact us!**

As home owners in Lee, we can offer a hands-on service to local people and those of you with second homes in the area. We are fit, active and able, we have skills, tools and common sense, and if we can't do the job you want, chances are we know someone skilled and local who can.

What can we do? Ground clearance, gardening, rubbish removal, chain sawing, maintenance jobs, local collection and delivery of bulky items, pet care, house airing, cleaning, changeovers, shopping, checking that you turned the gas off when you call at 10.00pm from the M5 ..... whatever!

We aim to provide an extensive and flexible service and suggest that you give us a call with your needs and we'll give you an honest appraisal of the situation and what we can offer. As villagers you can be confident of our local knowledge, reputation and honesty. Our desire is to run a local, sustainable business which fits in with our lifestyles and ultimately benefits yours.

Give us a call:

**Angus : 01271 865591 Mobile 07984209764**

**Nicki : 01271 855663 Mobile 07773703549**

**Email: leehomegarden@yahoo.co.uk**

# loveleebay

HOLIDAY LETS

## The East Wing - The Grange

LOCATED	2 minutes' walk from Lee village centre, 10 minutes to the beach
SLEEPS	5 (+2) in 3 bedrooms (1 king, 1 double, 1 single)
GARDEN	Large, luscious and unfenced, with stream border
DOGS	1 or 2 by arrangement
WEEKLY RATE	£360 to £820 excluding linen / towels



For more information, please go to

**WWW.LOVELEEBAY.CO.UK or call 01271 864 876**

## NEWS FROM ST. MATTHEW'S CHURCH



"THE CHURCH WAS PACKED WITH ABOUT 100 PEOPLE, INCLUDING A GOOD NUMBER OF CHILDREN."



"ON MONDAY 21 DECEMBER THE VILLAGE CAROL SERVICE WILL TAKE PLACE."

The major event in recent weeks has been the Harvest Festival celebration on Sunday 20 September. As the following day was St Matthew's Day, we combined the harvest celebrations with those for the Church's patron saint. The Church looked lovely, the handbell ringers played confidently, the choir sang lustily and everyone seemed to enjoy the service. The Church was packed with about 100 people, including a good number of children. Several village residents were involved in the processions and the presenting of gifts and symbols of village life and harvest. These symbols illustrated the theme of the service that 'all in the end is harvest' and that harvest is about people as well as things. The collection for Ilfracombe Poverty Action Group raised a little over £200 to which church funds were added to make a donation of £250 to IPAG. After the service, there was the usual splendid Harvest Supper in the Memorial Hall, always a feature of the celebration and much enjoyed by all. Many thanks to everyone who attended and to all who helped make the occasion a success.

On Wednesday 28 October, during the school half-term week, we shall be holding an Autumn Bazaar in the Memorial Hall. There will be a variety of stalls selling crafts and other goodies. Food and drink will be available all day with home-made soups, quiches, sandwiches, cakes, scones, cream teas, etc. The Bazaar will be open from 11.00 am to 4.00 pm, so please come along and encourage your friends and visitors to come.

On Friday 27 November at 7.30 pm there will be a concert in the Church given by the Exmoor Carollers. They are a highly talented group of musicians who will sing a range of traditional Exmoor carols as well as some more familiar ones. There will also be opportunities for audience participation! Food and a seasonal drink will be provided during the interval. Tickets for the concert are £6 and, because of the small size of the church, are limited in number. They will be available from the Churchwardens, Ian Stuart (863396) and Margaret Hill (864257) and can be reserved now. The Exmoor Carollers are popular throughout North Devon and we are fortunate that they are coming to Lee. I suggest you reserve tickets soon before they sell out!

As usual, there will be special services in St Matthew's Church over the Christmas period. On Monday 21 December the Village Carol Service will take place. This is an occasion for everyone to join in and will be followed by mince pies and mulled wine. The handbell ringers will perform again before and during the service and there will be plenty of familiar carols to sing and readings to listen to. The service starts at 6.30 pm and everyone is welcome. Similarly, everyone is welcome to the traditional Christmas Eve Communion Service at 10.00 pm on Thursday 24 December. This is always a lovely prelude to Christmas Day. We hope the beautifully decorated and candlelit Church will be full to overflowing for both these special services and we look forward to welcoming villagers and visitors alike.

Ian Stuart, Churchwarden and Vice-Chairman St Matthew's PCC

**Mike Turtons**  
**BUTCHERS**  
146 HIGH STREET, ILFRACOMBE  
01271 863643

**Deliveries to Lee & Lincombe  
residents & visitors**

**EXMOOR VENISON  
DEVON LAMB**

**LOCAL DEVON BEEF**  
from John Hookway (West Down)

**LOCAL DEVON PORK** (Large Whites)  
from Brian Holland (Yamscombe)

**FREE RANGE AND ORGANIC CHICKEN**  
also **FREE RANGE DUCKS**  
(Creedy Carver) by Peter Coleman



**We make our own Sausage, Pies and Pasties**  
**We also prepare Buffets for that Special Party**  
(quotes available)





## North Devon Access to Services Project

NDVS and Devon County Council are working in partnership to provide the North Devon Access to Services Project (NDASP). The purpose of this project is to find, develop and deliver affordable and practical solutions to enable people who live in the North Devon area make use of available services.

NDASP has already carried out a survey in the project area which looked at the issues people have in accessing services in their area. The study found that if residents did not have access to a car, were not on a bus route, needed a bus outside of normal work or school hours or did not have full mobility, regardless of age, then they would find it difficult to access services in the North Devon area.

The project now has funding until March 2011 to develop improved access to services. The priorities are to help people access health services, shopping, leisure activities, education and work. NDASP will be developing simple, practical solutions that help link people to existing services, which can be carried on into the future and will not suddenly stop due to lack of funding. This could mean helping people travel to the services they need, taking the services to them, or just helping people find out what is available.

The first things the project will be tackling are

- Improving access to car sharing schemes and Community Transport
- Improving access to mobile services
- Improving access to information

If you are having problems accessing services or you feel you might be able to help to find and provide solutions, please call NDASP on 01271 855951. The project would also like to talk to people who have a car and a little spare time and would be willing to give lifts to others. A contribution towards costs would be given.

NDASP is not trying to reinvent the wheel, but might be able to reintroduce some people to it!

Thank you

**Tim and Evie**

North Devon Access to Services Project team

**Please phone 01271 855951 for more information**

24 hour answer machine. You will be called back

[ilfracombe-transport@tiscali.co.uk](mailto:ilfracombe-transport@tiscali.co.uk)

[ndvs\\_tim@yahoo.co.uk](mailto:ndvs_tim@yahoo.co.uk)

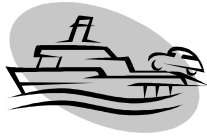


This project is supported by  
Devon County Council



Charity Number 289872





“THE SWANSEA  
FERRY IS NOW  
VERY LIKELY  
TO START  
SERVICE IN  
SPRING 2010”



## WHAT'S NEW IN THE DISTRICT COUNCIL?

The single biggest project is the Sea Change proposal to develop the Ilfracombe sea front around the Landmark Theatre and the Museum – a project costing more than £4 million. The District Council has made £1.5 million available, and other substantial fund sources have been identified, but the project really depends on the success of a bid for £1 million from CABE, the Commission for Architecture and the Built Environment. To date, 1<sup>st</sup> October, we still don't know whether we have been successful. In any case, whether we are successful or not, a parallel project is being pursued to develop the old Pavilion site by Capstone, probably using private money.

The Swansea ferry is now very likely to start service in Spring 2010, and the District and Ilfracombe is getting ready to handle the passenger numbers – of Devonians going to Swansea, and of visitors from South Wales attracted to the delights of North Devon without having to use the M4 and M5. This ought to have useful benefits for North Devon tourism, and it will be interesting to do our shopping in Swansea for a change!

More parochially, our planning officers are deep in discussion with the owners concerning plans for reviving the Lee Bay Hotel.

Within the Council itself we are struggling with the problem of sharply reduced revenues – with more reductions to come – and the need to maintain and where possible improve our front-line services.

We are looking in particular at possibilities of sharing services and personnel with Torridge District Council, and they are equally eager to cooperate with us. My own personal experience of working with Torridge is in putting together a joint strategy, setting out how we intend to manage the two districts up to 2026, and in this I have found cooperation impeccable. It is interesting to note that within this strategy we have been directed by central government to plan for 10,900 new dwellings in North Devon and more than 10,000 in Torridge: very ambitious figures which are now in question.

In short, times are difficult and will be for some time, and we are very busy coping with this – but there are a lot of interesting projects in the pipeline, and the long term future of Lee, of Ilfracombe and of the wider Northern Devon looks good.

Colin Wright, District Councillor, Ilfracombe West Ward



*Southcliffe Hall*

## Southcliffe Hall

### Bed and Breakfast

*Savour a taste of Edwardian grandeur  
Listen to the waves on the seashore  
Wander in our seventeen acre private woodland  
Watch the changing colours of the sea from the drawing room  
Take tea on our Victorian terraces  
Enjoy a glass of wine on the balcony  
Relax over dinner in our panelled dining room  
Hear the owls call at night  
Soak in the tranquillity of our lovely North Devon home*

01271 867 068

[info@southcliffehall.co.uk](mailto:info@southcliffehall.co.uk)

[www.southcliffehall.co.uk](http://www.southcliffehall.co.uk)

## LEE MEMORIAL HALL REPORT

I am delighted to announce that, following receipt of tenders, the Hall Committee has taken the decision to proceed with the project in its entirety, commencing in the first week of November. There are still some important discussions to take place before all the details are finalised, but we are sufficiently far advanced in these discussions for the main points to be made public. When all the details are in place, I intend to write another newsletter to all homes in the village and to many friends outside the village.

The contract has been awarded to Atlantic Developments, one of whose partners is Paul Jaggers who, as most readers know, lives in the village and is very well known in the village. It is a particular pleasure that the work will be done by an excellent builder who couldn't possibly be more local! Paul knows the village and the Hall very well and the Hall Committee is very confident that the work will be carried out to a high quality at a price that represents very good value for money.



As I have already said, I intend to write again to everyone soon. I hope this will be before the end of October or by early November at the latest. However, there is one important piece of information to communicate now. I have said and written on a number of occasions that I had hoped that the main hall, albeit without the kitchen and with portable heaters and a 'portaloo', could continue in use for much of the time whilst building work went on elsewhere. Unfortunately, it is now clear that we cannot use the Hall during the building work for two main reasons. One is that the difficulty of keeping dust out of the Hall would make it virtually impossible to maintain acceptable standards of cleanliness. The other reason relates to health and safety issues, particularly the likelihood that only one exit would be available for most of the time. So, reluctantly, the Hall Committee has decided that the Hall will have to remain closed during building operations which will last until February. We know this will cause major problems but the time of the disruption will be kept as short as possible and we hope that the benefits subsequently will far outweigh the short-term difficulties.

Do watch out for the next Newsletter which will come out soon!

Ian Stuart, Chairman, Lee Memorial Hall Management Committee



## NORMAN'S FRUIT & VEG

40 High St., Ilfracombe

We always have a wide choice of both fruit & vegetables & we sell local produce whenever possible.

PRESENTATION FRUIT BASKETS  
made to order from £6 upwards.

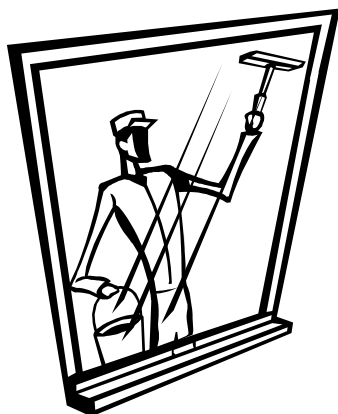
FLORAL BOUQUETS  
for weddings & celebrations

FLORAL ARRANGEMENTS  
for dinner parties or any situation

WREATHS

PHONE US TO DISCUSS YOUR REQUIREMENTS  
OR PLACE AN ORDER

**(01271) 863105**



## Need A Window Cleaner?

Contact Stephen Hutchison Window Cleaning

Using the latest water-fed pole technology

Totally eco-friendly (no detergents used) - Protects your privacy -  
Keeps your window frames clean too! - Regular reliable service

For a free quote with no obligation call:  
**(01271) 865 596 - Mobile: 07964 727 164**

Email: [stephenhutchisonwindowcleaning@gmail.com](mailto:stephenhutchisonwindowcleaning@gmail.com)



“MY FLOWERS  
DID LOOK  
BEDRAGGLED  
AND I DECIDED  
TO ENTER AT  
RANDOM AND  
HOPE FOR THE  
BEST. ”



## FLOWER SHOW 2009

This July was one of the wettest I can remember in Lee: hence my apprehension about show entries for the Flower Show. My flowers did look bedraggled and I decided to enter at random and hope for the best. I think this is what everyone must have done, because our hopes were answered and the display of flowers and produce was superb.

The hall looked lovely and I, together with the Committee, sincerely thank all who supported the Show with exhibits or came to admire and applaud the Trophy winners.

Certainly classes such as Domestic [Replica Cup] and Handicrafts [Anne Duke Memorial Cup] were hotly contested. The first was shared equally between Ruth Hawkins and Ginny Potts, the second went to Margaret Hill for having one more first prize but the same number of points as Ginny.

Equally Dr. Gwyn Humphreys and Carolyn Weekes were the proud winners of three trophies each.

That left me with the Rose Bowl and, in the children's section, left Isaac Zeale with the Children's Cup. Well done Isaac! It was great to see you receiving the Cup from our oldest inhabitant in Lee, Max King. I hope you saw the picture taken by Pat Seymour in the Journal. - congratulations to you all!

I am looking forward to next year's Show, having got some useful tips from our judges on how to choose the Chairman's Choice Fuchsia, and I hope that they are sent in time and are the plants we ordered.

The Committee and I hope you can all come to our AGM later on in October with some bright new ideas, or simply to enjoy the refreshments afterwards.

Biggi Wright

## Craft & Hobby Courses

Lower Campscott Farm - tel: 01271 863479

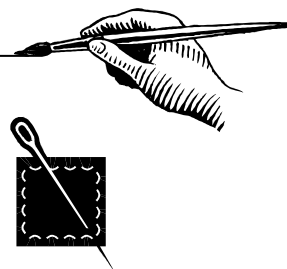
### Watercolour workshop

2nd Wednesday each month - tutor Brenda Keeble  
10am - 4pm, £10 per person, please bring your own lunch

### Patchwork

3rd Wednesday each month - tutor Margaret Hill  
10am - 4pm, £10 per person, please bring your own lunch

**NEW! Monday evening Patchwork course :7-9pm - £6.60**  
**Aerobics every Monday 9.30 - 10.30 am - £4 per session**



Come and treat  
yourself, have fun  
and learn  
a new skill!

## AUTUMN & WINTER AT THE GRAMPUS INN

After a busy summer season, everyone at the Grampus is preparing for a cosy but lively winter. We've waved goodbye to our hard-working students – Francis, Gemma and Sam – who have returned to university, and to our chef, Christian, who recently left for Thailand. We expect him to return to Lee next spring, and in the meantime would like to welcome our new chef, Ronan, to the village. We'd also like to thank all our other members of staff who helped keep the place running smoothly over the summer.

The tea-room has closed for the winter, after a very successful summer, but we will continue to offer homemade cream teas and cakes from the pub. Open Mic' Nights are still running on Friday nights from 9pm, and we will be starting a

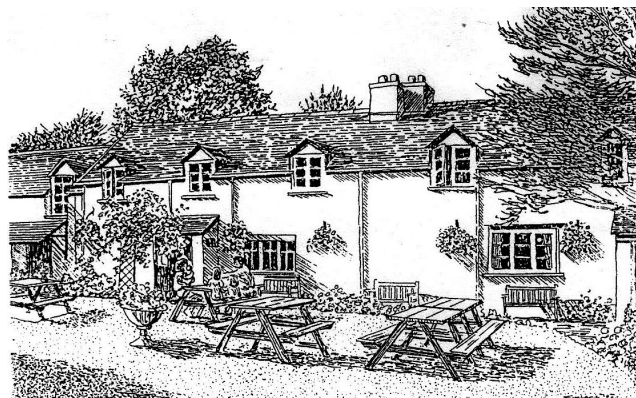
Sunday-afternoon folk session from 18 October. As with the open mic' nights, we welcome any musicians and singers who fancy joining in. Our monthly discussion group, Agnostics Anonymous, has proved popular, with many stimulating and lively debates. Our next meetings will be on 19 October and 23 November, and will possibly continue in the new year.

The various games leagues are back in full swing, and we've been glad to welcome not only the pool and darts teams, but also the mens' and ladies' skittles teams, back to the Grampus. We're also inviting others to take part in the fun and games by hosting 'Pot Luck' nights on Wednesdays, starting with skittles on 4 November. Each Wednesday up until Christmas will feature a different game and a different dish for £5.00. We're inviting people to come along for the games and/or the food: we'll start serving food at 7pm and begin the games around 8-8.15pm.

On 12 December we'll be hosting a Grampus Dinner Party, aided by Julia Waghorn, to kick off the Christmas season. After the success of last year's New Years Eve party, we'll be holding another one this year; as well as Twelfth Nights celebrations, with either the mummers or morris dancers. Further dates for your diary include Burns night on 25 January, a Valentine's evening on 13 February, and the Grampus's first Beer and Music Festival, 17-21 March! We are also planning further Grampus Dinner Parties in the future, featuring some of the 'secret chefs' that Lee has to offer.

More details about all of these events, including details about our 'Pot Luck' nights, will be available soon, so keep an eye on our website and notice-board. In the meantime, we look forward to seeing you at the Grampus!

Bryony and Bill



**COME AND BUY YOUR CHRISTMAS PRESENTS!**  
**AT THE AUTUMN BAZAAR IN LEE MEMORIAL HALL**  
**ON WEDNESDAY 28 OCTOBER 2009**  
**11.00 AM – 4.00 PM**

ARTS AND CRAFTS STALLS SELLING A WIDE VARIETY OF GIFTS

ALL DAY REFRESHMENTS – SOUP, QUICHES, SANDWICHES, CREAM TEAS, CAKES, ETC

**A GOOD DESTINATION FOR A HALF TERM OUTING!**

PROCEEDS IN AID OF ST MATTHEW'S CHURCH, LEE





## GRAMPUS INN: LUCY WRITES...

Time seems to have flown since I first came to the pub 8 months ago, and I've finally been able to put my [three] feet up and enjoy cosy evenings by the fire again, now that the hustle and bustle of the summer season is over. A litter of golden-brown leaves carpet the woodland floor, and my nemesis, the grey squirrel, is venturing to the ground to harvest nuts, a sure sign that winter is on its way. And a prime opportunity for some hunting... not that I've been successful so far, mind you.

I've made plenty of canine friends since I first joined Lee, and sadly lost one as well. My fellow three-legged friend, Meg the deerhound, died earlier this summer. A very elegant character

(even if she did have the temerity to steal sandwiches from under peoples' noses, admittedly with certain panache!) and she will be sorely missed. I will always remember racing around the beach with her by moonlight.

But there are still plenty of opportunities to have a run on the beach with some of my other friends, like Josh, who likes to think that he is faster than me, and the Adorable Dora – known to many as the Other Pub Dog. Although she does have a tendency to race back to Bryony to see if any treats are on offer... Another favourite friend is Gimli, who definitely lives up to his Lord of the Rings namesake, being a wiry-haired, ginger-bearded dachshund. We have many middleworld adventures together, where I have no trouble playing the graceful and athletic Legolas.

We had a dramatic evening at the beginning of summer, after an Agnostics Anonymous meeting, when one of our customers fell over her dog, Alice, and had to leave in an ambulance. I took it upon myself to reassure Alice about this incident – not only do humans have a tendency to fall over after visiting public houses, but it is not so very bad to be missing a leg. I would have advised the human-vets to amputate the leg (there is, after all, something to be said for the sympathy vote) but they must have decided to fix it. Good advice is so rarely taken up.

Well, it is a bright and frosty morning outside, so I must see if I can drag Bryony for a walk. I expect the huskies will be looking forward to racing around in this cooler weather; I only wish I had as much fur to snuggle up in (though I'm sure Mavis wouldn't be pleased with me if I were moulting all over the carpets). Bryony has threatened to make me something warm and woolly to wear; Bill and I are dreading the result. I personally think she should stick to the usual crocheted baby-projects, especially since (or so I've heard on the canine grapevine) there will soon be the patter of non-furry feet in the husky-household. Not that you would catch me gossiping about it.

love Lucy, the Legless Pub Dog.

## ADULT & COMMUNITY LEARNING: AUTUMN COURSES

Adult & Community Learning is offering courses & training opportunities in your local area. All Maths & English courses are **FREE** and available to individuals and businesses. Brochures are in all local Libraries & Community Centres! The venue for all courses is Two Lanes Centre Ilfracombe.



**Speaking Confidently at Work for ESOL** (English for speakers of other languages): 4 weeks (Tues, 18:30 – 21:00) from November 3<sup>rd</sup>

**Certificate in Paediatric First Aid (HSE)** 2 weeks (Fri, 09:30 – 16:30) from November 6<sup>th</sup>

**Life Choices - Independent Living – Try It Out!** BSIL1041: 1 day (Fri, 10:00 – 13:00) November 6<sup>th</sup>

**A guide to making the best Job Application** 5 weeks (Mon 10 – 16) from November 10<sup>th</sup>

**Life Choices - Independent Living** BSIL1037: 25 weeks (Fri, 10:00 – 16:00) November 13<sup>th</sup>

Please contact Devon Adult and Community Learning on **01271 864171** for more information and / or to book your place now!





## MINI MONSTERS PARENT & TODDLER GROUP

Mini Monsters has enjoyed a busy summer and welcomed lots of new members, both holiday makers and locals. During the summer break we had a music morning in the Grampus pub given by Jenny Baker who had the children playing instruments, singing and dancing. A big thank you to Bill and staff for their kind hospitality. We also all enjoyed a morning rock pooling in Lee Bay on one very sunny day when the children had great fun scrambling about the beach.

Future events include Halloween, 31st October, when we are having a spooky village ramble followed by party food in the Grampus. Please join us in the pub car park at 5.00pm suitably attired including wellies and torches. Please bring a snack for the party table in the back room of the pub.

With the start of a new school year, we say a sad farewell and best wishes to the founding members of our group, Benjamin and Daniel, who like Grace, Matilda and Jacob the year before have now started in Reception at Woolacombe School and also to Anna who is now at Ilfracombe pre-school. When the group started in November 2006, we were unsure whether it would be sustainable and attract enough support to keep going. We are happy to report that the group continues to grow and thrive. Despite the loss of our founder members and others such as Eva who has gone to reception at Woolacombe, Jasper to

Ilfracombe and Fynne & Orin who have moved to France, it's great to be able to say that there are plenty of younger children keeping the group going and especially exciting to report that even more are in the pipeline with three of our regular members expecting babies and, rumour has it, the editor of this fine newsletter and village resident also planning to add to our numbers!

A little pat on the back to us all for running such a successful and fun group and long may it continue.

As ever, Mini Monsters always welcomes new members both for regular and occasional visits and we look forward to seeing you on Monday mornings 10 am to 1pm in Lee Village Hall.

Any further information can be sought from Sally 863171, Anne 865588 or Kate 865591.

P.S. As the village hall is closing for refurbishment over the winter, our last meeting in the hall will be on Monday 2nd November. We hope to have an alternative venue and programme of events finalised before then. Please contact one of the members mentioned above for details.

## CALLING ALL LITTLE GHOSTS, GHOULS, WITCHES AND WIZARDS

COME OUT AT NIGHT FOR A GHOSTLY RAMBLE  
AROUND LEE VILLAGE

**Halloween**  
SATURDAY 31 OCTOBER

**meet in the car park of the  
GRAMPUS pub at 5.00pm  
for the ramble which will be  
followed by spooky food in the pub**

All children invited (with their grown ups)  
suitably attired (including wellies!) with torch/light

Please bring a spooky snack for the tea to be held in the  
back room of the pub.

Children's refreshments provided, grown up drinks  
purchasable at the bar

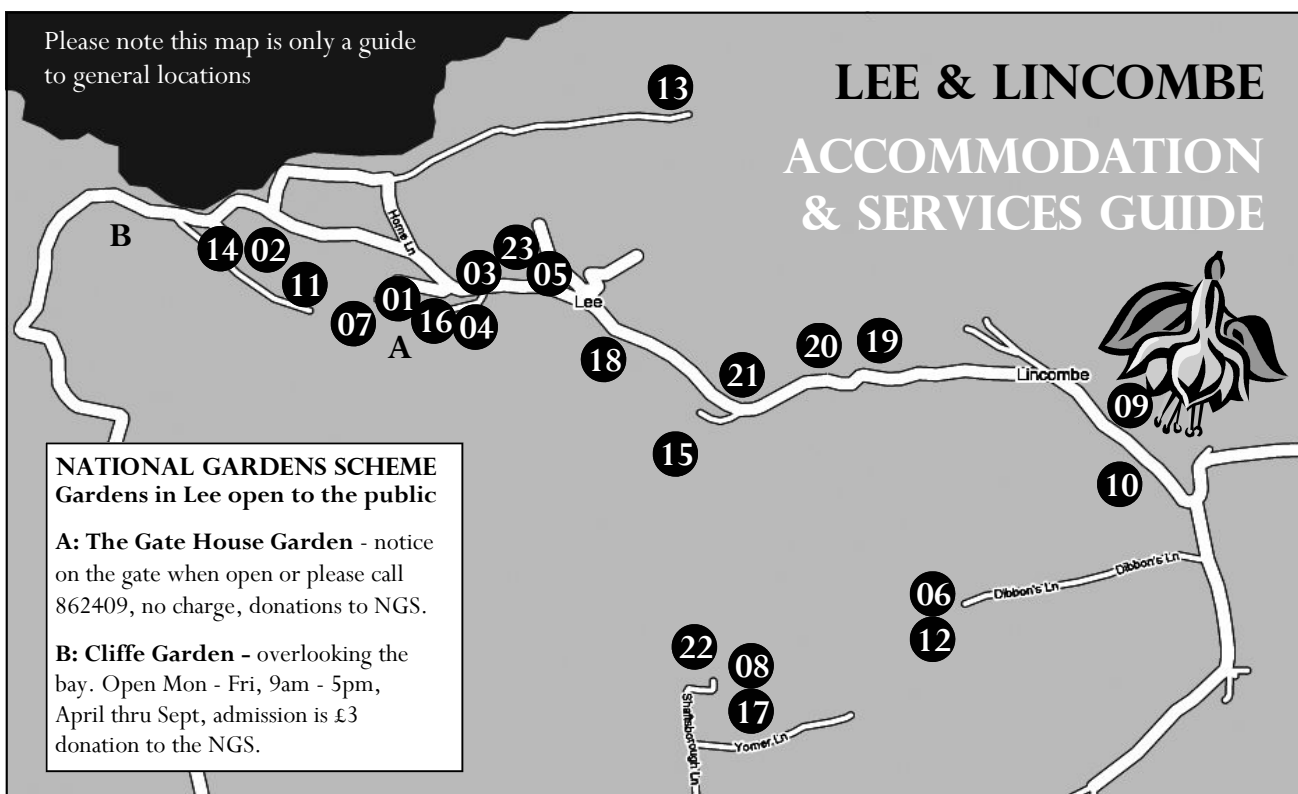
Mini Monsters, Lee's Parent and Toddler Group meet on  
Mondays 10.00am to 1.00pm in the Village Hall and will  
be making ghostly things in preparation.  
Please join us, everyone welcome

For more details, contact Kate on 01271 865591 or Sally on 863171



Please note this map is only a guide to general locations

## LEE & LINCOMBE ACCOMMODATION & SERVICES GUIDE



### NATIONAL GARDENS SCHEME Gardens in Lee open to the public

**A: The Gate House Garden** - notice on the gate when open or please call 862409, no charge, donations to NGS.

**B: Cliffe Garden** - overlooking the bay. Open Mon - Fri, 9am - 5pm, April thru Sept, admission is £3 donation to the NGS.

### VILLAGE SERVICES

1. Pub, Tea Rooms & Village Shop: The Grampus Inn - [www.thegrampus-inn.co.uk](http://www.thegrampus-inn.co.uk) - Bill Harvey \_\_\_\_\_ (01271) 862906
2. Hotel: The Lee Bay Hotel \_\_\_\_\_ CLOSED
3. The Old Schoolroom Craft Gallery & Gift Shop - [www.noonoo-art.co.uk](http://www.noonoo-art.co.uk) - Louise Thompson \_\_\_\_\_ (01271) 864067

### BED & BREAKFAST

4. The Orchard - [www.theorchardlee.co.uk](http://www.theorchardlee.co.uk) - Mrs Ginny Potts \_\_\_\_\_ (01271) 867212
5. Rose Cottage - Carolyn Weekes & Eric Couling \_\_\_\_\_ (01271) 863257
6. Lower Campscott Farm - [www.lowercampscott.co.uk](http://www.lowercampscott.co.uk) - Mr & Mrs Cowell \_\_\_\_\_ (01271) 863479
7. Southcliffe Hall - [www.southcliffhall.co.uk](http://www.southcliffhall.co.uk) - Kate Seekings & Barry Jenkinson \_\_\_\_\_ (01271) 867068
8. Shaftsboro Farm - [www.shaftsboro.co.uk](http://www.shaftsboro.co.uk) - Margaret & Frederick Kift \_\_\_\_\_ (01271) 865029
9. High Banks, Lincombe - Pat & Tony Seymour \_\_\_\_\_ (01271) 863628

### SELF CATERING (max. per unit)

10. Lincombe House (2,6,5) - [www.lincombehouse.co.uk](http://www.lincombehouse.co.uk) - Richenda S Carter \_\_\_\_\_ (01271) 864834
11. Chapel Cottage on Beach Lane (9) - Mrs Ginny Potts \_\_\_\_\_ (01271) 867212
12. Lower Campscott Farm (8,6,6,4,4,4) - [www.lowercampscott.co.uk](http://www.lowercampscott.co.uk) - Mr & Mrs Cowell \_\_\_\_\_ (01271) 863479
13. The Blue Mushroom (2,3) - Mavis & Michael Rogers \_\_\_\_\_ (01271) 862947
14. Wrinklewood (4) - Penny Measures & David Perry \_\_\_\_\_ (01271) 866535
15. Crowness Cottage (4) - [crowness.cottage@tesco.net](mailto:crowness.cottage@tesco.net) - Irene Duffield \_\_\_\_\_ (01268) 742162
16. Brookdale Villa (11) - [www.brookdale-lee.co.uk](http://www.brookdale-lee.co.uk) - Alan & Margaret Bannister \_\_\_\_\_ (01923) 266989
17. Shaftsboro Farm - [www.shaftsboro.co.uk](http://www.shaftsboro.co.uk) - Margaret & Frederick Kift \_\_\_\_\_ (01271) 865029
18. The East Wing, The Grange (5+2) - [www.loveleebay.co.uk](http://www.loveleebay.co.uk) - Gina-Luisa Hilborne \_\_\_\_\_ (01271) 864876
19. Lee Chapel (5) & School House (4), combined (9) - [www.visitleechapel.co.uk](http://www.visitleechapel.co.uk) - Geoff Barker \_\_\_\_\_ 07870 239 973
20. Charlton Cleave (8) - [kateandgus@yahoo.co.uk](mailto:kateandgus@yahoo.co.uk) - Kate Madden \_\_\_\_\_ (01271) 865591
21. Rock End (4-6) - [kateandgus@yahoo.co.uk](mailto:kateandgus@yahoo.co.uk) - Kate Madden \_\_\_\_\_ (01271) 865591
22. Allender Farm (8,6,6,5,2+) - [www.allenderfarm.co.uk](http://www.allenderfarm.co.uk) - Jane & Jim Bridges \_\_\_\_\_ (01271) 866679
23. The Old Vicarage (15) - [www.theoldvicaragelee.com](http://www.theoldvicaragelee.com) - Amanda Robertson \_\_\_\_\_ 07973 963 887

*The opinions expressed by authors of the articles in the Lee & Link'em News are not specifically endorsed by the editorial team which cannot be held responsible for them.*

### SPRING 2010 ISSUE DEADLINE - 01 FEBRUARY 2010

Article formats: typed in any PC text program and emailed to [gina@loveleebay.co.uk](mailto:gina@loveleebay.co.uk). Please avoid using floppy disks or handwriting.

**IMPORTANT: ALL ADVERTISING MUST NOW BE PAID FOR BEFORE THE COPY DEADLINE.**