

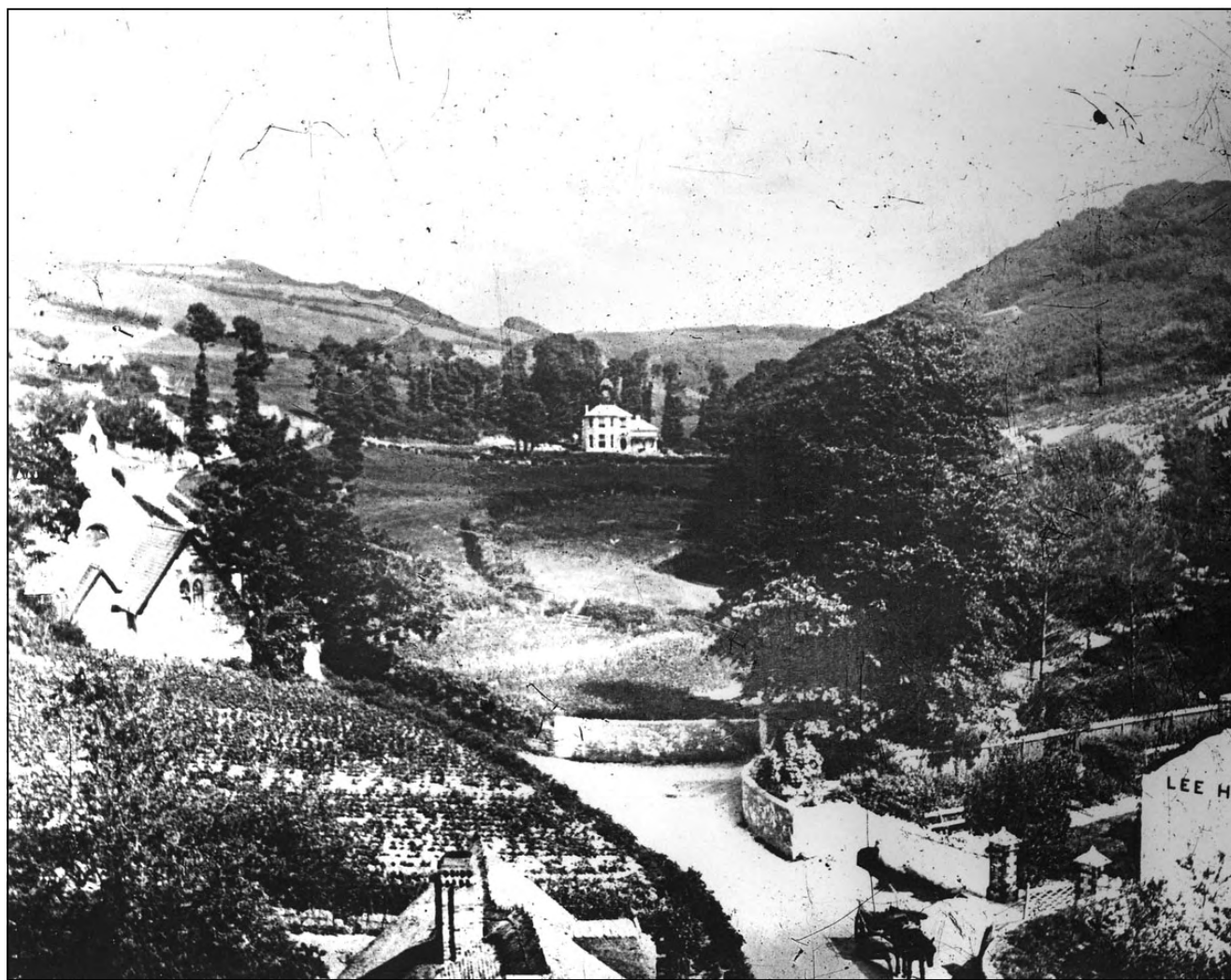
FOR THE RESIDENTS OF LEE & LINCOMBE VILLAGES  
AND SURROUNDING AREAS AND OUR VISITORS

# LEE & LINK'EM NEWS

---

AUTUMN 2007

50P



AN EARLY TWENTIETH CENTURY VIEW UP THROUGH LEE VILLAGE TO 'MIRAMAR'  
('VIEW OF THE SEA'), NOW KNOWN AS 'THE GRANGE'

[www.leebay.co.uk](http://www.leebay.co.uk)

## LEE AND LINCOMBE – FUTURE DATES FOR 2007

### VILLAGE DIARY

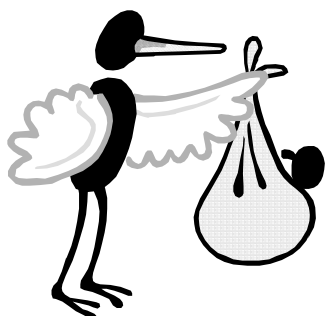
Thursday 1 November 7.45pm	Flower Show AGM - Memorial Hall
Wednesday 5 December	Christmas Bingo – Memorial Hall. Doors open 6.30pm. Eyes down as soon as the Hall is full! £5 for 3 books. Free refreshments. Many prizes including luxury Christmas hamper. Proceeds to local children's charities.
Tuesday 18 December 6.30pm	Village Carol Service – St Matthew's Church Hand bell ringing from 6.10pm. Refreshments in the Memorial Hall after the service.
Monday 24 December 10.00pm	Christmas Communion Service – St Matthew's Church
Friday 28 December 12noon	Festival Dip at Lee Bay - fancy dress/funny hat essential!
Every Wednesday 1.00 – 3.30pm	'Mini-Monsters' – Memorial Hall

*If you would like anything included in the 2008 diary for the next issue, please contact the editors (see below)*

### LEE & LINK'EM NEWS TEAM

<b>Editorial team</b>	Gina-Luisa Hilborne Heather Booker Ian & Cynthia Stuart	Tel: 864876 Tel: 862409 Tel: 863396	gina@loveleebay.co.uk
<b>Production</b>	Ian & Cynthia Stuart	<b>Advertising Manager</b>	Heather Booker
<b>Delivery teams</b>	Bryan & Helen Lye; Alun Dobson & Becca Wyles		

### GREETINGS AND FAREWELLS



The population of the village has remained remarkably stable in recent months! Unfortunately we forgot to welcome Elizabeth Purdy in the last edition. Elizabeth, the daughter of Luke and Natali Purdy of Higher Campscott Farm, was born on 7 May. Welcome Elizabeth!

The only movement into and out of the village that we are aware of is the departure of Peter and Shirley Desmond from West Claves and the arrival of Keith and Gina Witts to West Claves. Peter and Shirley have moved to Bovey Tracey and are near neighbours of John and Jenny Massey who moved

from Lincombe nearly a year ago. Our best wishes go to Peter and Shirley. It is welcome back to Keith and Gina! They moved from Wrinklewood a number of years ago, but the lure of Lee is compelling! We hope they will be very happy back in the village and, of course, they are near to their son, Julian, and Suzanne and family.

If we have missed anyone, we apologise and will be happy to make amends in the next issue if you will let the editor know.



## NEWS FROM ST. MATTHEW'S CHURCH

After a summer when we welcomed many visitors to the church, including those who came to see the additional flowers or listen to the visiting organists during the Arts and Crafts Exhibition, the next major event was the highly successful Harvest Festival on 16 September. As last year, the service was designed to celebrate village life and involve many people. We developed and, hopefully, improved last year's ideas and extended them to include our links with our local, national and international communities united in the common theme of food and drink – the harvest of the land and sea. Village organisations and activities were represented, the hand bell ringers played before and during the service, and the 16 person choir led the excellent singing, including a splendid descant during one of the hymns. The church was full and the general verdict was of an enjoyable and worthwhile occasion successfully bringing people together to celebrate our village community. The service was followed by a magnificent supper in the Memorial Hall, the result of much effort by many people in preparation, serving and clearing away. The cost of the supper came entirely from church funds as a way of saying 'thank you' to all who supported the event and the whole collection has been given to the local Salvation Army in Ilfracombe to support its work with those in need in this area. Including the tax that will be reclaimed for donations gift-aided and an addition from church funds, £300 has been given to the Salvation Army.

I am writing this note on 1 October, a day after Woolacombe's Harvest Festival and one day before the church's Quinquennial (every 5 years) Survey. Woolacombe's Harvest Festival was combined with a baptism and confirmation conducted by the Bishop of Crediton. In a memorable and moving service, Sebastian Birch was both baptised and confirmed and we send our congratulations and best wishes to him following this auspicious event. The Quinquennial Survey is always awaited with some trepidation. What problems might there be that we don't already know? What will be the cost of carrying out necessary repairs? We are already aware of some problems and we know that some other matters, such as the increasing need to redecorate the church, will need attention. We shall have the report of the architect and surveyor in a month or so. We want, of course, to keep the gem that is St Matthew's Church in good condition so that it is always available for present and future generations, so we shall have to see what the report has to say.

Thoughts will soon be turning to Christmas. This year's special services will follow a similar pattern to last year's. Everyone is most welcome to come to them and, of course, any other service. On Tuesday 18 December the village Carol Service will be held at 6.30 pm. The hand bell ringers will play a selection of carols before the service from 6.10 pm and will also play during the service. Children and young people from the village will present a series of nativity scenes and other people will be involved with readings. There will be plenty of well known carols for everyone to sing! Afterwards there will be light refreshments and drinks in the Memorial Hall kindly provided by the Hall Committee. Somehow we managed to pack about 120 people into the church for last year's Carol Service! Do come along this year for this whole village event. Then, on Christmas Eve, Monday 24 December, at 10.00 pm, there will be the traditional Christmas Communion Service with the singing led by the choir in the beautifully decorated, candlelit church. Again, the church was absolutely packed last year for this splendid service, so do come along this year.

Finally, I should like to thank Carol Porton as her lease on the Old Schoolroom comes to an end after 5 years. Carol has been an excellent tenant running a first-rate Craft Shop which has been of enormous benefit to visitors and residents alike. Carol has also kept an eye on the church, opening it when she arrives for the shop and closing it when she leaves. Her help has been greatly appreciated and she will be much missed. Quite a bit of interest has been expressed by people attracted to taking a lease on the Old Schoolroom but, at the time of writing, nothing has been decided. Expressions of interest are still being invited. Hopefully, there will be good news to report in the next edition of the Lee and Link'em News!

Ian Stuart

Vice-Chairman St Matthew's PCC



"THE 16  
PERSON  
CHOIR LED  
THE  
EXCELLENT  
SINGING"



"CAROL HAS  
BEEN AN  
EXCELLENT  
TENANT  
RUNNING A  
FIRST-RATE  
CRAFT  
SHOP"



## Southcliffe Hall

Bed and Breakfast

*Savour a taste of Edwardian grandeur  
Listen to the waves on the seashore  
Wander in our seventeen acre private woodland  
Watch the changing colours of the sea from the drawing room  
Take tea on our Victorian terraces  
Enjoy a glass of wine on the balcony  
Relax over dinner in our panelled dining room  
Hear the owls call at night  
Soak in the tranquillity of our lovely North Devon home*

01271 867 068

[info@southcliffehall.co.uk](mailto:info@southcliffehall.co.uk)

[www.southcliffehall.co.uk](http://www.southcliffehall.co.uk)

## SUBSCRIBE TO THE LEE & LINK'EM NEWS

Our thrice-yearly newsletter is free to residents, and available to non-residents at 50p from The Grampus Inn, the Lee Bay Hotel and The Old Schoolroom Gift & Craft Shop.

We offer two types of annual subscription (3 issues) to non-residents who are unable to visit our beautiful villages. Choose between:

- A paper copy delivered to your door for £3.00 per year
- A PDF document emailed to your inbox for £1.50 per year

If you would like to subscribe, please contact the editors with your details and remittance.

# PAINTINGS DRAWINGS & PRINTS

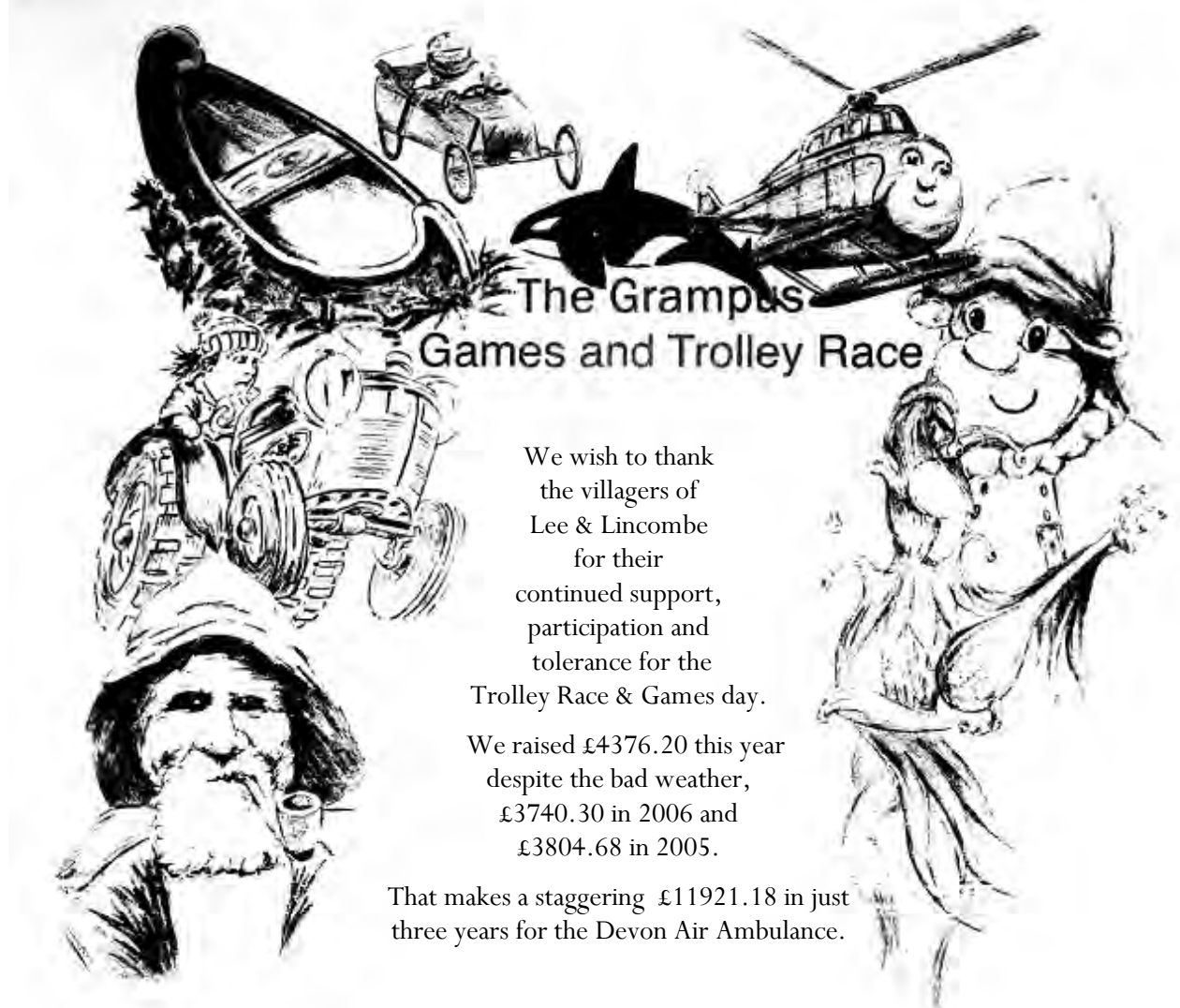
*By  
Julian Clark*

Can be seen at The Grange, Lee  
11am–1pm & 2–4pm

Entrance facing main lawn



## THE GRAMPUS GAMES & TROLLEY RACE



We wish to thank  
the villagers of  
Lee & Lincombe  
for their  
continued support,  
participation and  
tolerance for the  
Trolley Race & Games day.

We raised £4376.20 this year  
despite the bad weather,  
£3740.30 in 2006 and  
£3804.68 in 2005.

That makes a staggering £11921.18 in just  
three years for the Devon Air Ambulance.

Due to personal circumstances Mark has passed the Trolley Race Committee chair role to Barry Porton, but do not fret, Mark will still be playing an active role in the future events.

Mark and Mandy wish to extend their personal thanks to all villagers but especially to the Committee for all their help and support.

Once the accounts have been finalised and signed off, they will be posted on the village notice board for all to see.

ONCE AGAIN THANKS TO ALL

## THANK YOU & FAREWELL

The editors of the Lee & Link'Em News wish to convey their thanks to Mrs Carol Porton of Sunnyhill, Lincombe, for her constant support and sale of this publication via the Old Schoolroom Gift & Craft Shop, which closes its doors for the last time this year.

We are sure that our sadness in seeing this charming shop close is echoed throughout the villages but trust that everyone joins us in wishing Carol all the very best in her next project.



## MEMORIAL HALL - HOLDING TRUSTEES

The continuing Holding Trustees, Roy Dyer and Paul Thom, would like to place on record their very sincere and grateful thanks to Liz Gilliat for her committed and dedicated work for the Memorial Hall during the past 23 years on the Management Committee with the last 12 years as a Holding Trustee. We were sad to receive Liz's resignation but fully understand the reasons for it. She will be missed at this difficult time in the Memorial Hall's life and we hope she might return sometime in the future.

A village meeting has been called to appoint a new Holding Trustee and this will be held in the Memorial Hall on Friday 12 October 2007 at 7.30pm. The Holding Trustees are appointed by the village to hold the Memorial Hall and land in trust for the village and to safeguard the Memorial Hall and field for future generations. It is a responsibility which cannot be taken lightly.

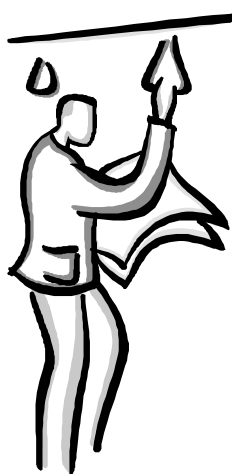
Any adult 'permanently resident within 5 miles of St. Matthew's Church, Lee' can put their name forward for the vacancy. The key requirement should be a love for the village and desire to keep the Memorial Hall one of the focal points of village life. 'Any adult inhabitant of the Parish of Lee' is entitled to attend and vote at the meeting and so please come along and exercise your right to vote on this important appointment.

01 October 2007



## BUS SERVICES TO THE VILLAGES

OCTOBER 2007 TO MAY 2008

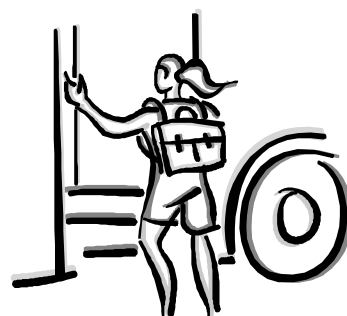


We are continuing to enjoy a regular winter bus service. Most of the summer service is being continued throughout the winter months, including some services on Saturdays, to give 3 buses each way a day Mondays to Fridays and two on Saturdays (but none on Sundays).

Fortunately after the problems of access at Lee Bay were resolved, buses started running through to the seafront during the summer rather than turning round near the Fuchsia Tea Rooms. This will continue throughout the winter. For the winter timetable which started on 1 October, Filer's bus leaves Ilfracombe bus station for Lincombe and Lee at 0955, 1230 and (Mondays to Fridays) 1415 and from the High Street about 3 minutes later. (The 1705 has been withdrawn for the winter.) The bus leaves Lee Bay for Ilfracombe at 1018, 1253 and (Mondays to Fridays) 1438, stopping on request through the village and scheduled to reach Lincombe Cross at 10.25, 13.00 and (Mondays to Fridays) 14.45.

If you are over 60, travel is free if you have a Devonwide travel pass (as it is throughout Devon after 9.00 am Monday to Fridays and anytime at the weekends). If you haven't got a pass, contact the Ilfracombe TIC, telephone the Devonwide office on 01271 383688 or go to the website at [www.devonwide.gov.uk](http://www.devonwide.gov.uk) for details of how to apply. The bus service to Lee is subsidised by Devon County Council to encourage the use of public transport in rural areas, so do use it!

Ian Stuart



## CHRISTMAS BINGO



Lee Memorial Hall's usual Christmas Bingo takes place again on Wednesday 5th December 2007, and this year the chosen charity will again be C.L.I.C Sargent. The response I got when I actually delivered the cheque by hand to the local shop in Barnstaple was so appreciative that I came out with a real skip in my step, they really were so very grateful, and it's such a great feeling to know that we're all helping not only those less fortunate than ourselves, but at a time when giving is far more important than anything else, and isn't Christmas all about children and helping others, particularly those facing a more uncertain future than any of us can understand, who desperately

need anything we can give them, however big or small. Just to put a great big smile on their faces, and even laughter in their hearts for a short time, must be worth everything we can do.

Doors open at 6.30pm, with Adrienne serving tea or coffee at a small charge, and after last year's phenomenal turn-out, where we had to turn people away, an early entrance would probably be advised. Refreshments will again be free in the interval, when we do our now-famous raffle which, I hasten to add, I love you all for making it so. Our luxury hamper will be even more desirable for those with an indulging appetite and sweet tooth! Ticket prices are the same as last year: £5.00 for a full set of 3 tickets and 2 flyers or possibly 3 flyers, with the help of a few generous wholesalers!!!!

I don't need to thank you all again, as I know that you all enjoy it as much as I do, every year we've raised more than the previous, lets see if we can break the record once more, I know you won't let them down.

From Mother Christmas and her little helper. x x x x x

*The Old Schoolroom Gift & Craft Shop*

***Closing Down Sale***

*All stock must go – Start your Xmas shopping*

***NOW!***

*12 – 5 Everyday during October*





“SINCE THE  
MILLENNIUM  
THERE HAS  
BEEN A GREAT  
CHANGE OF  
OWNERS OF  
PROPERTIES IN  
THE VILLAGES ”

## LEE MEMORIAL HALL COMMITTEE

Since I took over the Chairmanship of the Memorial Hall Committee in May this year we have had a very busy and demanding time. The hall and meadow have been used for a medieval fayre, an arts and crafts exhibition, church events, committee meetings, W.I., weekly playgroup, patchwork group, teas, flower show, weddings, birthday parties, evening functions, and along with grant bids, these have all required organisation and input by the committee.

Since the millennium there has been a great change of owners of properties in the villages and surrounding area and for those of you, like me, who did not know the history of the hall I thought I would fill you in.

Following the 1st World War, in the 1920's, the villagers of Lee, Lincombe and the surrounding area wanted to show their respect and gratitude to those from within the community who gave their lives for their country. They did this by collectively raising £700 to build a lasting memorial, and our hall came into being. As it says in the plaque in the hall next to the notice board this was for “public meetings, lectures, entertainments, social gatherings, a village club and other public purposes”. They also donated furniture, books etc. to equip it. After the 2nd World War the hall was extended and improved by the villagers as a memorial to those who had died in that conflict. This work provided sanitation, kitchen facilities, a stage and committee room at a cost of £1387 raised by the village, and a £650 Ministry of Education grant. The land to build the extension was donated by Mr & Mrs F. C. Pilley who lived in the village.



“THE  
COMMITTEE  
NOW FACE THE  
CHALLENGE OF  
KEEPING THE  
HALL IN  
EXISTENCE AND  
USABLE FOR  
THE  
COMMUNITY”

Now we are 50 years on and the hall, the meeting place of our community, now faces a number of serious problems and challenges. The newest extension built in the 1970's, which provides our existing kitchen, has subsidence and is slowly falling down. There is also now a need to comply with, and implement, new Government and E.U. legislation regarding food regulations, child protection, equal opportunities, hygiene, refuse disposal, disability discrimination, health and safety, insurance, electrical and fire rules, hazard analysis requirements, environmental issues and the hall's carbon footprint. Some of these matters will require urgent attention within the next two years to enable the hall to stay open.

The committee now face the challenge of keeping the hall in existence and usable for the community for the next 80 years. The application to the Big Lottery Fund was our first step in this, for a community buildings programme grant of £250,000. There were 1,600 applications in our group and we have been successful in reaching the last 545. The final decision as to whether we go through to the next stage will be known in late December. In order to complete the bid all the committee and other villagers worked hard planning the bid and obtaining estimates from builders, electricians, sewage specialists, plumbers, kitchen suppliers, child safety experts, local charities, community fund raising departments, exhibition equipment suppliers, conservation specialists and many more. So far the hall improvement fund stands at approximately £2,000, raised from cream teas in the hall at Easter and in August and a donation by the W.I. from afternoon teas. This money will be needed to pay for the architect and other initial expenses in putting together the bid. If we are successful in reaching the second stage a lot more work and fund raising will have to be done. In this respect members of the committee will be asking all the residents and property owners in Lee



## LEE MEMORIAL HALL COMMITTEE CONTD.

and Lincombe and area to help and I hope I can rely on you all to support us when needed in any way you can and to attend fund raising events that we will be arranging.

The hall has also been successful in its application to the Devon Community fund for a £7,000 grant for playground equipment to be erected in the meadow. This has been a complicated issue for the committee to deal with because of constitutional difficulties and personal differences in views, but the final vote by the management committee was 6 for, 4 against, and 1 abstention. This was then approved by the Trustees, so that the playground could go ahead. We hope that work on this will be starting later in the year.

On behalf of the committee and residents I would like to thank retiring Trustee and committee member Liz Gilliatt for all her hard work for the village hall for the last 23 years. Apart from her Trustee duties, she has taken on a lot of background work for the hall that is mostly not known about or appreciated. She has been the person who empties the rubbish after bookings and puts it out for collection every week, she is always there for anyone who forgets the key, and for the other things that people forget. There is also the leaflet distribution, endless posters, costumes, scenery, exhibition and fayre assistance, helping with the cleaning, tidying and gardening. I personally will miss Liz for all the advice and support she has given me.

Our thanks also to Carolyn Weekes, the hall booking secretary, and Eric Couling, who have both resigned from the committee. They were committed to the upkeep of the hall and did a lot of extra work over and above the job description including gardening work, cutting the meadow and hedges, and the electrical work the hall was always needing. Eric's burgers at the fayre are renowned. Colin Wright has also resigned and I would thank him for his work over the past year, which included the hall's Equal Opportunities Policy.

Because of these resignations we will need new representatives for the committee, there are still 3 vacancies, one person from the Resident's Association, the church and the village. A booking secretary is also needed. Please contact me if you would like to join us on the committee at this important time in the hall's history.

Tony Seymour

01271 863628



# FOX

**PROFESSIONAL  
CLEANING SERVICES**

**SPECIALISING IN:**

- ◆ **HOLIDAY PROPERTY CLEANS**
- ◆ **DOMESTIC**
- ◆ **LAUNDRY BY ARRANGEMENT**

Covering Lee, Ilfracombe, Woolacombe, Morthoe, Croyde, Georgeham, Braunton, and all surrounding areas

**A PROFESSIONAL, FAST AND RELIABLE  
SERVICE EVERY TIME**

At Fox, we pride ourselves on providing a professional, personalised service, and can cater for special requirement requests, and provide property management services.

**FOR ALL ENQUIRIES PLEASE CONTACT US ON:**

**01271 862 184**

**OR**

**07920426465**

**OR EMAIL:**

**[foxcleaning@europe.com](mailto:foxcleaning@europe.com)**

## **The Orchard - B&B**

**Ginny & Geoff Potts**



- VICTORIAN HOUSE
- THREE GUESTROOMS
- WOOD BURNING STOVE
- EXTENSIVE GARDEN
- VARIED EVENING MENU

Ginny is happy to cater for vegetarians, vegans and anyone with special dietary requirements.



Lee, North Devon, EX34 8LW

**Tel: (01271) 867 212**

[ginmypotts@hotmail.com](mailto:ginmypotts@hotmail.com)  
[www.theorchardlee.co.uk](http://www.theorchardlee.co.uk)

## **Loveleebay Holiday Lets - 01271 864 876**

**NEW**



### **The East Wing - The Grange**

LOCATED - 2 minutes' walk from Lee village centre

SLEEPS - 6 in 3 bedrooms (1 double, 1 single, 1 triple)

GARDEN - Large, luscious and unfenced, with stream border

DOGS - 1 or 2 by arrangement

WEEKLY RATE - £355 to £850

For more information, please go to  
**[WWW.LOVELEEBAY.CO.UK](http://WWW.LOVELEEBAY.CO.UK)**

## **Craft & Hobby Courses**

**Lower Campscott Farm - tel: 01271 863479**

### **Watercolour workshop**

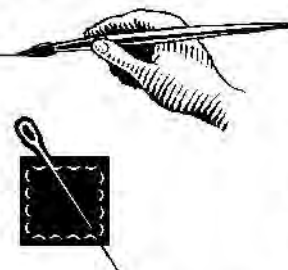
2nd Wednesday each month - tutor Brenda Keeble

### **Patchwork**

3rd Wednesday each month - tutor Margaret Hill

10am - 4pm, £10 per person, please bring your own lunch  
Enquire about a new Patchwork course to start in September

**Aerobics every Monday 9.30 - 10.30 am - £4 per session**



Come and treat yourself, have fun and learn a new skill!

## JAPANESE KNOTWEED UPDATE



### Knotweed news

Results are very encouraging.

### Facts and Figures for 2007

The project is currently assisting nineteen landowners with the control of knotweed on 23 sites in Lee and Borough Valley, including three additional areas adopted in 2007.

This year, it has taken 208 hours to organise and implement the project.

We are one of the very few projects to train local personnel to PA6aw standards, rather than to rely on very expensive contractors - and we are being watched with interest.

### Project observations on knotweed control (for gardener readers)

Stem-injection in the autumn appears to be the most effective treatment.

Knotweed is heavily affected by light and shade; it grows more slowly in shady areas. Herbicide ratios have been varied to accommodate this and results will inform next year's treatment.

Spraying during a period of dry weather is less effective.

After a period of a year without growth, knotweed can reappear and therefore needs careful monitoring.

We agree with the University of Exeter's findings that sub-lethal doses of herbicide may induce dormancy, and take note that treatment sites should be inspected during the growing season for at least three years after the last plant growth has been observed. Even after this period, soil disturbance may result in renewed growth.

Consequently, we have developed a healthy respect for this plant! It's going to be a long haul - but we remain undaunted.

### Want to help?

If you wish to help the project, our main problem for the foreseeable future is raising funds to make up our 43% grant, which is due to finish in 2008. Although many of our workers are volunteers, any donation, however small, helps towards covering additional costs incurred for labour, chemicals, equipment and insurance. Please send donations to Mavis Rogers, The Blue Mushroom, Lee EX34 8LR. Cheques should be made payable to "Lee and Lincombe Residents Association (J. Knotweed)". You will be helping to save our beautiful valley (the knotweed stand on the Slade Valley road indicates what happens if it remains untreated).

Thank you!

The cooperation and support of landowners involved in the project is very much appreciated.

A heartfelt thank-you to this year's spraying, stem-injecting, cutting and burning team, in particular to Philip Apse, Cameron Campbell, Jon Dowding, Richard Howard, Barry Jenkinson, Bryan Lye, Helen Lye, David Perry and Brian Russell. Without you, this year's project would never have been so successful. Thank you, likewise, to all those who have contributed in so many other ways: on the committee, through fund-raising and with general support and help.

"Mavis Knotweed"

On behalf of the Japanese Knotweed Committee:

Janet Birch, Barry Jenkinson, Bryan Lye, David Perry, Mavis Rogers, Paul Thom, Julia Waghorn



“THE  
GARDENERS  
IN LEE  
ALWAYS SEEM  
TO COME UP  
TRUMPS”



“WE ARE  
ALWAYS ON  
THE  
LOOKOUT  
FOR NEW  
MEMBERS”

## LEE VILLAGE FLOWER SHOW

Another year, another flower show, once again a success despite the weather. Last year hot and dry, this year wet and cold. We never know what the elements will throw at us but the gardeners in Lee always seem to come up trumps. The day of the show was very wet indeed which made it difficult for the entrants to get their exhibits into the Hall in pristine condition. Thank you to everybody who braved the conditions. The Hall was once again filled with the colour and scent of flowers and baking. Well done to all of the exhibitors.

### TROPHY WINNERS

Floral Art	Mrs M. Hill
Domestic	Mrs G. Potts
Produce	Mrs H. Matthews
Cut Flowers	Dr G. Humphries
Pot Plants	Mrs G. Potts
Handicraft	Mrs G. Potts
Children's Cup	Master B. Merritt
Challenge Cup	Mrs G. Potts
Memorial Hall Cup	Mrs C. Weekes
Chairman's Choice	Mrs C. Weekes
The Cliffe Cup	Mrs B.H.L. Wright
Rose Bowl	Col. R. Gilliat

John Massey presented the trophies this year. It was lovely to see both John and Jenny back in the village. They are sorely missed as committee members, having moved from Lee to be nearer family.

This flower show was also our Chairman's last as he too will be leaving us soon to move with Beryl to be nearer their family. Jeff has been Chairman of the flower show for 20 years and it has gone from strength to strength. Col. Bob Gilliat made a presentation on behalf of the committee thanking Jeff for his years of service to the flower show. He will be very hard to replace.

On that note I will say that we are always on the lookout for new members. Our next event will be the A.G.M. on Thursday, 1st November at 7.45pm in the Memorial Hall, Lee, so please come along and join us.

Carolyn Weekes

Show Secretary



## LEE MEMORIAL HALL WILD FLOWER MEADOW

The wild flower area was the idea of Heather Booker of The Gate House, Lee. Heather had noticed that we had left a large area of School Meadow uncut to attract wildlife. She kindly offered to supply the seeds and the labour to create a native wildflower meadow. The Hall Committee took her up on this offer to enhance the meadow and Roy Dyer advised on a suitable area for this project.

Heather sourced the seeds from 'Landlife Wildflowers' at the National Wildflower Centre, a registered environmental charity. She chose a mixture of annuals and perennials. The flowers we saw this year were Corncockle, Cornflower, Corn Marigold and Corn Poppy, annuals which will hopefully seed themselves freely next year. The perennials which should flower next year are Yarrow, Ladys Bedstraw, Betony, Oxeye Daisy, Field Scabious, Selfheal, Lesser Knapweed, Ribwort Plantain, Wild Carrot and Meadow Buttercup. So look out for a better show next year. If you have walked through the meadow this summer you will not have been able to miss the spectacular show of colour. It has certainly been well photographed and a gentleman with a tripod (serious stuff) spent two evenings taking a variety of shots from all angles. It has even inspired our local artist Julian Clarke to put paint to canvas.

Thanks to Heather and her gardener Carey for a very successful project and I am sure the insects and butterflies would like to say a big thank you too. We would like to increase the area next year with perhaps a different seed mix to increase the variety. So watch this space.

Carolyn Weekes



"THANKS TO  
HEATHER  
AND HER  
GARDENER  
CAREY FOR  
A VERY  
SUCCESSFUL  
PROJECT"

## BREAKING THE SILENCE

*A new play, in celebration of the life of Rachel Carson.*

**Woolacombe Village Hall - Thursday, 18<sup>th</sup> October 2007, 7.30pm**

After the success of the Theatre Roundabout Festival earlier this year, an exciting new play, "Breaking the Silence", is coming to Woolacombe - **for one performance only**. This powerful, professional production brings us face to face with the threat to our environment, through the eyes and words of Rachel Carson, born 100 years ago this year.

Rachel Carson was an American marine biologist and nature writer. Her life and work were both dogged and spurred on by controversy, as the giants of the chemical industry and its political sponsors sought to discredit and intimidate her. But she opened the eyes of millions to the threat posed to life on this planet by the indiscriminate use of chemicals.

This year, the centenary of her birth, the controversy is still raging. Rachel Carson remains a beacon for the environmentalists and a target for the chemical industry. But she is also a woman – a woman urgently trying to convey her love and concern for those close to her, for all humanity and for the teeming life in the earth and sea around us all.

Written and performed by the actress, Liz Rothschild, the play has already opened to enthusiastic reviews and will have played in a dozen different places by the time it reaches us in Woolacombe. For more information visit the website: [www.rachelcarson.co.uk](http://www.rachelcarson.co.uk)

Box Office: Janet Mayo (01271 862 453), Tim Cox (01271 862 781)

Tickets available also at: Shirley's Newsagents, Woolacombe; Trans Send, High Street, Ilfracombe.



## MINI MONSTERS PLAY GROUP

As we approach our first anniversary, we thought it would be a good time to report back on our first year.

We began as a little group with two aims. First was to provide a safe and fun place for small children to meet, play and form friendships which we hoped would stand them in good stead as they went on to schools

in neighbouring towns. The second was to provide the opportunity for parents to get together offering friendship and support at a time which, while rewarding for many, can for some people be quite isolating. We hope that we have achieved both of these aims, and are really pleased with how much support the group has had. It is so lovely to see the children, some painfully shy at first, singing, dressing up, and laughing - together.

We have been very fortunate and are hugely grateful for the enormous support we have received. At first we had nothing, and kind and useful gifts were donated by villagers, especially Janet Mayo, Carolyn Weekes and Adrienne Howard and the Church made a generous donation of £250. Then this Spring we were delighted to be awarded two grants, one from the Local Area Network Fund for £4,000 and one from Ilfracombe Town Council for £500. Many, many thanks to these three institutions.

We are delighted that from for the first time Lee now falls within the area covered by the national scheme for children, Surestart, and each month their Toy Library visits our group to lend toys and organise group activities. Other activities have been organised by villagers, and special thanks must go to Sebastian Birch and Janet Mayo for the wonderful Teddy Bears Picnic (below) they put on for the children in September, and to the Malin family who donated special bears for the occasion.



We always welcome visitors. Anyone in the area, including holidaymakers, can come along. If you don't have small children but are near the village hall on a Wednesday between 1 and 3.30pm, please drop in for a cup of tea. If you would like to come and do an activity with the children – storytelling or making something for instance – we'd be especially really grateful and pleased to see you.

Call Kate 01271 865501 or Katie 01271 867068 if you want to know anything else and hope to see you soon.



**Devon Adult and****Community Learning**

Courses starting at a Devon ACL Centre near you

**If you (or your group) would like Devon ACL to schedule a course in your Village Hall, this may be possible. We only need 8 people to enrol and suitable premises. Please contact Caroline Verney to discuss the possibilities.**

<b>Date/Time</b>	<b>Course</b>	<b>Venue</b>
Sat 6 <sup>th</sup> Oct 10-4pm	Creative Mosaics workshop	Two Lanes, Ilfracombe
Sat 6 <sup>th</sup> Oct 10-4pm	Drawing & Painting Landscapes	Combe Martin Community Centre
Sat 27 <sup>th</sup> Oct	Drawing & Painting Portrait	Combe Martin Community Centre
Tue 11 <sup>th</sup> Dec 10-4pm	Christmas Greeting Cards	Two Lanes, Ilfracombe
Thu 20 <sup>th</sup> Dec 10-4pm	Country Crafts – Christmas	Two Lanes, Ilfracombe
Sat 15 <sup>th</sup> Dec 10-4pm	Workshop/Table decorations	Combe Martin Community Centre
Sat 13 <sup>th</sup> Oct 10-4pm	Floristry Course Autumn	Two Lanes, Ilfracombe
Sat 1 <sup>st</sup> Dec 10-4pm	Christmas Workshop	Two Lanes, Ilfracombe
Sat 10 <sup>th</sup> Nov 10-4pm	Mastering your Camera (Digital & Film users)	Combe Martin Community Centre
Wed 31 <sup>st</sup> Oct 2-4pm	Computing – Files & folders	Combe Martin Community Centre
Wed 31 <sup>st</sup> Oct 7-9pm	Family History & The Internet	Combe Martin Community Centre
Sat 8 <sup>th</sup> Dec 9.30-3pm	Finding Your Guardian Angel	Two Lanes, Ilfracombe
Sat 8 <sup>th</sup> Dec 9-5pm	Health & Safety CIEH Certificate	Two Lanes, Ilfracombe
Wed 7 <sup>th</sup> Nov 6.15-9.45pm	CIEH Food Safety in Catering	Combe Martin Community Centre
Wed 27 <sup>th</sup> Feb 6.30-9.30pm	CPCAB Listening Support Skills	Two Lanes, Ilfracombe

**Telephone 01271 864171 for further details or to book your place**

*Making Learning Happen*

[www.devon.gov.uk/adultlearning](http://www.devon.gov.uk/adultlearning)

## WRINKLEWOOD POTTERY CLASSES

Starting in the New Year, during those dark evenings of Winter we will be opening the workshop on a Monday evening providing facilities to throw pots (with tuition if needed!). Aspire to making tea pots, vases, mugs & bowls, we offer to help with decoration & firing.

Children's class planned for Saturday mornings 10am to 12.30pm during term time.

**Please contact Penny for details on 01271-866535**

*Experiment with clay*





# lee bay hotel north devon

lee nr ilfracombe  
devon EX34 8LR  
tel: 01271 867 600  
fax: 01271 863 956  
www.leebayhotel.com  
leebay@theplacehotels.co.uk



The Lee Bay Hotel is now owned and managed by the same group who run The Place Camber Sands near Rye in East Sussex (featured in The Good Food Guide, The Good Hotel Guide and The Michelin Guide), The Bell Hotel Sandwich in Kent (featured in The Good Hotel Guide and The Michelin Guide) and The Ship Hotel Chichester in West Sussex.  
See our website - [www.theplacehotels.co.uk](http://www.theplacehotels.co.uk)

## **The Waterfront Bar and Bistro**

General Manager Matthew Bailey has been overseeing the introduction of a new menu and choice of drinks in the Waterfront Bar and Bistro. The emphasis is on using fresh, local, seasonal and organic produce in the menu. For drinks we offer a range of real ales, an eclectic wine list and cocktails as well as a full range of non-alcoholic drinks.

## **Hotel refurbishment**

The hotel will be subject to a programme of restoration and refurbishment in order to create a desirable place to eat, drink, meet and stay in the most fabulous of locations.

## **Weddings and private functions**

The Lee Bay Hotel is licensed for civil weddings. If you are planning a wedding or event please contact our General Manager, Matthew Bailey.

We are open everyday and all are welcome (including pets), whether you are local, in a family group or simply enjoying the beautiful scenery or landscape.  
Please come in and see us.





## FANCY A SWIM? TRY THE FESTIVE DIP!



There's the opportunity to have some fun by taking part in the 3rd Lee Bay Festive Dip on Friday 28 December at 12 noon. Fancy dress or funny hats essential to ward off the cold.

Last year there were 15 hardy swimmers and all felt better for having the swim, see our photo below of Gemma & Laura!



Check out the Incredible Hulk from the group photo!

We will hopefully be collecting donations of money on the beach and we will be sponsoring the event for a worthy cause yet to be determined. Afterwards swimmers are invited to have a cup of mulled wine at Wrinklewood, then on to the Grampus Inn.



All enquiries to Dave Perry (left) on (01271) 866 535.



## MEMORIES OF LEE FROM ACROSS THE POND

Thank you to Mr Tony Joseph for sending us these 1962 clippings of his adventures in Lee, all the way from his home in Manhattan Beach in California! Unfortunately the papers put his name incorrectly as 'Richard'.

Tony recounts, "Bennison is the chap with the open neck shirt and Watkins has the tie on. Gloria sort of saved the day as she brought along a flask of hot coffee. The helicopter landed in the field between the Old Farm and the house at the end of the path leading down to the bay opposite the house up on the hill behind."

*Bucks Advertiser.*  
**Helicopter saves  
Gerrards Cross  
boy from sea** *Sept. 2nd  
1962.*

**A** 16-YEAR-OLD Gerrards Cross boy on holiday in North Devon, was one of four people who figured in a dramatic rescue by helicopter after being at the mercy of the sea for 12 hours on Saturday night.

The boy, Richard Joseph, of Bull-lane, agreed to go on an all-night fishing trip with Larry Watkins, a chef, of Princess-avenue, Ilfracombe; Miss Gloria Hyes, a waitress, of Elmer Vale, Liverpool; and Jim Bennison, an hotel worker, of Settle-avenue, Rochdale.

Mr. Watkins is employed at the Lee Bay Hotel, Ilfracombe, where both Miss Hyes and Mr. Bennison work. Mr. Joseph was a guest at the hotel.

The trip was planned by Watkins after he had caught a conger eel weighing 28½ lb. He borrowed a rowing boat belonging to his employer.

The four set off at 7 p.m. on Saturday night, rowing out a few miles into the bay before dropping anchor. The strong current lifted the anchor from the bottom and from that moment the boat began to drift in the Bristol Channel.

The current took them up and down channel and towards dark they found themselves miles from their original objective.

All three men took a hand in rowing in an effort to reach shore, but the current proved too strong. They were five miles out near Bull Point lighthouse when Mr. Watkins used a torch and signalled the lighthouse. But of no avail.

Further away they drifted, and by morning the three men, after rowing for over 10 hours, were exhausted and drenched by heavy rain. As a last hope they tied a bath towel to a fishing rod and waved it about.

It was 7.15 a.m. on Sunday when a helicopter crew, ordered to make a search, together with the Ilfracombe lifeboat, spotted the rowing boat three miles north-east of Bull Point.

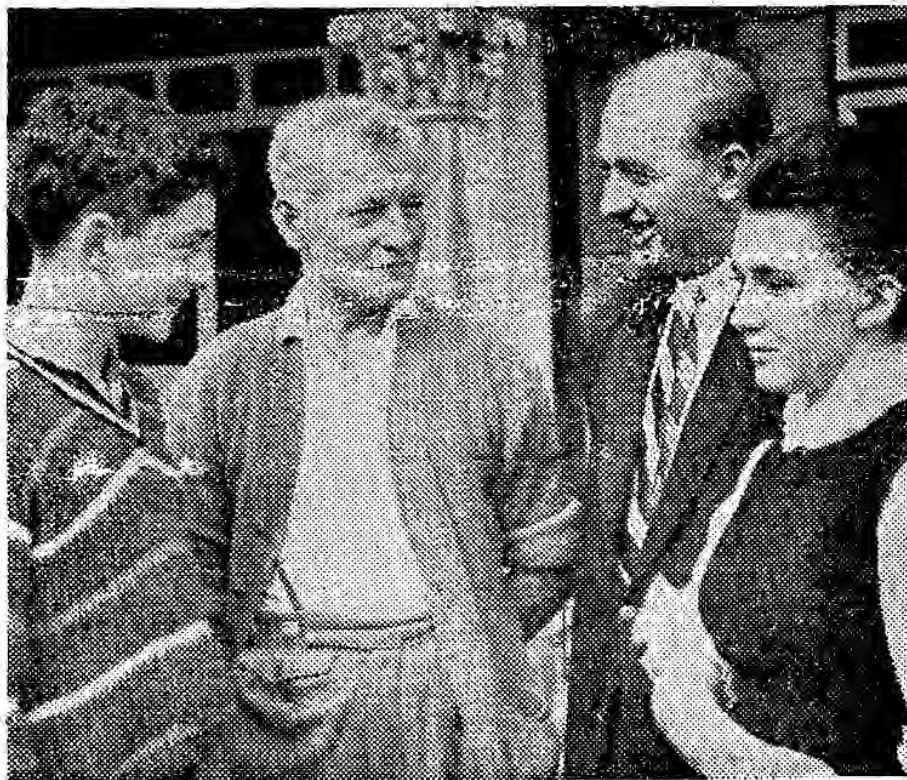
One of the crew was lowered by winch from the aircraft and swam to the boat. Mr. Watkins, Mr. Joseph and Miss Hyes were hauled aboard the aircraft. Mr. Bennison was put aboard the Ilfracombe lifeboat and taken to Ilfracombe Harbour.

They said: "It was nerve-racking. Several times we were within 100 yards of land, but the current took us out again."



## MEMORIES OF LEE FROM ACROSS THE POND CONTD

## FISHING PARTY SAVED AFTER 'NIGHTMARE' DRIFT



A FISHING trip at Lee nearly ended in disaster on Saturday night for three hotel workers and a young holidaymaker. Their rowing boat drifted helplessly during the night despite their efforts to bring it ashore.

It was not until Sunday morning—nearly 12 hours after they had set out on their fishing expedition—that a helicopter from R.A.F. Chivenor and Ilfracombe lifeboat brought them to safety.

The helicopter, which sighted the boat about three or four miles off Lee, picked up three of them.

They were Mr. Larry Watkins, of Princess Avenue, Ilfracombe, who is the chef at the Lee Bay Hotel; 20-year-old Miss Gloria Hayes, a waitress at the hotel; and a young holidaymaker, 16-year-old Richard Joseph, of Bull Lane, Gerrards Cross.

The fourth fisherman, Mr. Jim Bennison, a still-room worker at the hotel, was landed at Ilfracombe

Their troubles started soon after their rowing boat had left Lee.

They decided to lower the anchor and start fishing—but the anchor would not reach the bottom.

Then began what one of the party later described as 'a nightmare.'

Mr. Watkins took a major share of the rowing, but their efforts to reach the shore were in vain.

Strong currents swept the boat to a point several miles off Saunton, despite a determined bid to beach it at Woolacombe.

Later, the rowing boat drifted back to Lee, and it was there, after the alarm had been raised, that the helicopter and lifeboat came to the rescue.

Although cold and wet—it rained heavily for an hour during the night—the fishermen were little the worse for their experience.

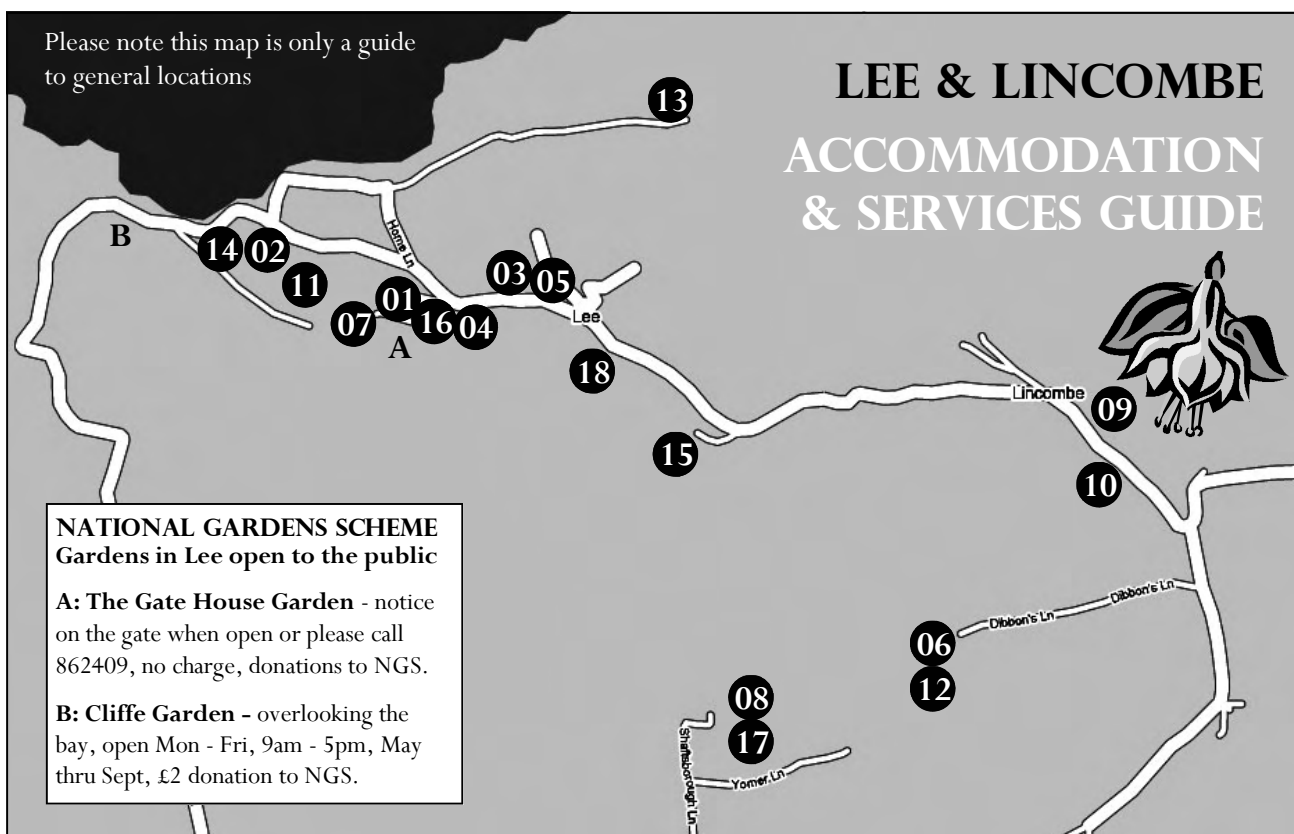
They went to bed after having hot baths, but the three members of the staff were on duty later in the day.

6/9/62,

North Devon Journal Herald.

Please note this map is only a guide to general locations

## LEE & LINCOMBE ACCOMMODATION & SERVICES GUIDE



### NATIONAL GARDENS SCHEME Gardens in Lee open to the public

**A: The Gate House Garden** - notice on the gate when open or please call 862409, no charge, donations to NGS.

**B: Cliffe Garden** - overlooking the bay, open Mon - Fri, 9am - 5pm, May thru Sept, £2 donation to NGS.

### VILLAGE SERVICES

1. Pub: The Grampus Inn - [www.thegrampus-inn.co.uk](http://www.thegrampus-inn.co.uk) \_\_\_\_\_ (01271) 862906
2. Hotel: The Lee Bay Hotel- [www.leebayhotel.com](http://www.leebayhotel.com) \_\_\_\_\_ (01271) 867600
3. Shop: The Old Schoolroom Gift & Craft Shop - please see advert inside \_\_\_\_\_ (01271) 864141

### BED & BREAKFAST

4. The Orchard - [www.theorchardlee.co.uk](http://www.theorchardlee.co.uk) - Mrs Ginny Potts \_\_\_\_\_ (01271) 867212
5. Rose Cottage - Carolyn Weekes & Eric Couling \_\_\_\_\_ (01271) 863257
6. Lower Campscott Farm - [www.lowercampscott.co.uk](http://www.lowercampscott.co.uk) - Mr & Mrs Cowell - \_\_\_\_\_ (01271) 863479
7. Southcliffe Hall - [www.southcliffhall.co.uk](http://www.southcliffhall.co.uk) - Kate Seekings & Barry Jenkinson \_\_\_\_\_ (01271) 867068
8. Shaftsboro Farm - [www.shaftsboro.co.uk](http://www.shaftsboro.co.uk) - Margaret & Frederick Kift \_\_\_\_\_ (01271) 865029
9. High Banks, Lincombe - Pat & Tony Seymour \_\_\_\_\_ (01271) 863628

### SELF CATERING (max. per unit)

10. Lincombe House (2,6,5) - [www.lincombehouse.co.uk](http://www.lincombehouse.co.uk) - Richenda S Carter & Jean M Brearley \_\_\_\_\_ (01271) 864834
11. Chapel Cottage on Beach Lane (9) \_\_\_\_\_ (01271) 864257
12. Lower Campscott Farm (8,6,6,4,4,4) - [www.lowercampscott.co.uk](http://www.lowercampscott.co.uk) - Mr & Mrs Cowell \_\_\_\_\_ (01271) 863479
13. The Blue Mushroom (2,3) - Mr & Mrs Rogers \_\_\_\_\_ (01271) 862947
14. Wrinklewood (4) - Penny Measures & David Perry \_\_\_\_\_ (01271) 866535
15. Crowness Cottage (4) - [crowness.cottage@tesco.net](mailto:crowness.cottage@tesco.net) - Mr & Mrs Duffield \_\_\_\_\_ (01268) 742162
16. Brookdale Villa (11) - [www.brookdale-lee.co.uk](http://www.brookdale-lee.co.uk) - Mr Bannister \_\_\_\_\_ (01923) 266989
17. Shaftsboro Farm - [www.shaftsboro.co.uk](http://www.shaftsboro.co.uk) - Margaret & Frederick Kift \_\_\_\_\_ (01271) 865029
18. The East Wing, The Grange (6) - [www.loveleebay.co.uk](http://www.loveleebay.co.uk) - LOVELEEBAY Holiday Lets \_\_\_\_\_ (01271) 864876

*The opinions expressed by authors of the articles in the Lee & Link'em News are not specifically endorsed by the editorial team which cannot be held responsible for them.*

**SPRING 2008 ISSUE DEADLINE - 01 FEBRUARY 2008**

Article formats: typed in any PC text program and emailed to [gina@loveleebay.co.uk](mailto:gina@loveleebay.co.uk). Please avoid using floppy disks or handwriting.